

SCREW PUMPS / POMPE A VITE SERIE SMT

TECHNOLOGY IN MOTION

Dry & submersible screw pumps for
industrial applications - 80 bar pressure



TECNOLOGIA IN MOVIMENTO

Pompe a vite esterne o sommerse per
applicazioni industriali - Pressione 80 bar

The image shows a technical drawing of a screw pump with various labels in Italian: 'Serie / Series SMT', 'Aspirazione / Axial suction', and 'H1'. Overlaid on the drawing is the text 'SMT series' in large blue letters, followed by 'Dry & submersible screw pumps' and 'for industrial applications - 80 bar pressure' in smaller blue text.

SMT series

Dry & submersible screw pumps
for industrial applications - 80 bar pressure



Three screw pumps

Three screw pumps represent the largest class of multiple screw pumps in service today. No matter the applications and the environmental conditions, three screw pump is the most flexible pump on the market.

Well known to be very reliable, at reasonable cost, virtually pulsation-free flow, very low acoustic emissions, three screw pumps are extensively used in meeting the requirements of oil & gas, chemical, marine, industrial, mobile, alternative energy, food processing, paper, power gen, pharmaceutical and many other industries.

SMT three screw pumps represent one of the most used pump series all over the world after thirty five years of experience.

Le pompe a tre viti

Le pompe a tre viti, oggi, rappresentano la classe di pompe a viti maggiormente utilizzate, indipendentemente dal tipo di applicazione e dalle condizioni ambientali, in quanto sono le più flessibili sul mercato. Sono considerate le più affidabili, a prezzi ragionevoli, e raggiungono bassissimi livelli di emissioni acustiche e assenza di vibrazioni nella trasmissione del flusso. Le pompe a tre viti sono ampiamente utilizzate in quanto rispettano i requisiti di settori quali oil & gas, chimico, navale, mobile, agroalimentare, power generation ed energie alternative, industria della carta, industria farmaceutica e molte altre.

*Le pompe a tre viti della serie **SMT**, sono tra le più usate in tutto il mondo e vantano oltre trent'anni di esperienza.*

No pulsation – smooth flow. Low noise

SMT three screw pumps are designed to avoid any pulsation, to ensure a smooth operation and to reduce to the lowest level the acoustic emissions reducing all costs of second noise reduction measures.

The pulsation-free flow of **SMT** pumps allows these screw pumps also in output condition management critical to applications such as precision hydraulic controls and fuel metering.

Flusso omogeneo – Nessuna pulsazione. Basse emissioni acustiche

*Le pompe a tre viti della serie **SMT** sono progettate per eliminare le pulsazioni, assicurare un funzionamento omogeneo e ridurre al minimo le emissioni acustiche, riducendo in questo modo i costi legati alla necessità di ricorrere a misure secondarie per la riduzione del rumore.*

*Il flusso privo di pulsazioni delle pompe **SMT**, permette l'applicazione di queste pompe anche in condizioni critiche, come ad esempio idraulica di precisione, dosaggio e misurazione di carburanti.*

SMT Magnetic coupling

SMT pump can be equipped with a magnetic coupling if required. The hermetically sealed magnetic coupling is a permanent magnetic synchronous coupling able to transmit torque through magnetic forces between the internal and external rotor. Applying a magnetic coupling, the drive and the driven sides are hermetically separated. In case of critical media the magnetic coupling is a reliable seal and avoids any serious leaking.

The magnetic coupling is the containment shroud that is fixed to the driven sided power unit and separates internal and external rotor from each other. Due to the absence of mechanical connection the vibrations torque transmission are very low, with completely leak-proof separation of product and atmosphere.

The magnetic coupling is used to ensure no media leaking or when working in environments with potentially explosive atmospheres.

SMT Giunto magnetico

*Le pompe **SMT** possono, su richiesta, essere dotate di giunto magnetico. Il giunto magnetico permette di sigillare l'accoppiamento che trasmette la coppia tra il rotore interno ed esterno tramite forza magnetica. Con l'applicazione del giunto magnetico, l'elemento di trasmissione e quello condotto sono ermeticamente separati. In caso di fluidi pericolosi, il giunto magnetico garantisce una tenuta affidabile che impedisce perdite. Il giunto magnetico consiste nella copertura fissata sull'elemento condotto che separa il rotore interno da quello esterno. Grazie all'assenza di connessioni meccaniche, le vibrazioni dovute alla trasmissione di potenza sono molto ridotte, senza possibilità di contaminazione dell'atmosfera da parte del fluido e viceversa. Il giunto magnetico è utilizzato per prevenire in modo sicuro perdite in ambienti con atmosfera potenzialmente esplosiva.*

Technical characteristics / Caratteristiche tecniche

T pes <i>Tipi</i>	Dry (SMT) or submersed (SMIT) <i>Esterno (SMT) o sommerso (SMIT)</i>	
Models <i>Modelli</i>	20 – 25 – 32 – 40 – 45 – 55 – 60 – 70 – 80 – 90	
Ins alla ion <i>Installazione</i>	Free for SMT. Submerged (totally or partially) for SMIT <i>Qualsiasi per SMT. Sommersa (parzialmente o completamente) per SMIT</i>	
Flanges <i>Flange</i>	ISO 3019/2	
Connec ions <i>Connessioni</i>	SAE 3000 - BSPP	
Dri e loading <i>Carichi</i>	No axial or radial loads <i>Nessun carico assiale o trasversale</i>	
Shaf ro a ion <i>Rotazione albero</i>	Clockwise (from shaft end) , (suitable also for counter clockwise rotation) <i>Destra (disponibile anche per rotazione sinistra)</i>	
Shaf speed <i>Velocità di rotazione</i>	From 500 to 3.600 rpm ⁽¹⁾ <i>Da 500 a 3.600 rpm⁽¹⁾</i>	
Flo s <i>Portate</i>	From 4 up to 1.220 L/min <i>Da 4 a 1.220 L/min</i>	
O le Press re <i>Pressione di mandata</i>	Up to 80 bar <i>Fino a 80 bar</i>	
Inle Press re <i>Pressione in aspirazione</i>	Min. -0.7 bar max. 3 bar ⁽²⁾ <i>Min. -0.7 bar max. 3 bar⁽²⁾</i>	
Fl ids⁽³⁾ <i>Fluidi⁽³⁾</i>	<ul style="list-style-type: none"> • Mineral oil HLP e HLVP • Ecologic fluids HETG, HEPG, HEE • Synthetic fluid or emulsion: HFA oil-water emulsion, HFB water-oil emulsion 40% of volume, HFC water/glycole – water max 35 to 55%, HFDR phosphate ester • Lubrication high viscosity oils • Special synthetic fluid: MIL-H, SKYDROL, • Fuel oil: MGO, MDO, Low sulfur MDO and HFO • DMX (ISO8217), DMA, DMB, DMC, DMZ • Bunker oil, furnace oil, engines oil, heating oil, hydraulics oils DIN 51524 	<ul style="list-style-type: none"> • Oli minerali HLP e HLVP • Fluidi ecologici HETG, HEPG, HEE • Fluidi sintetici o emulsioni: HFA emulsione olio-acqua, HFB emulsione acqua-olio 40% dl volume, HFC acqua/glicole – acqua max 35 to 55%, HFDR phosphate ester • Olio ad alta viscosità per lubrificazione • Fluidi speciali sintetici: MIL-H, SKYDROL, • Fuel oil: MGO, MDO, Basso livello di zolfo MDO e HFO • DMX (ISO8217), DMA, DMB, DMC, DMZ • Bunker oil, furnace oil, olio per motori, heating oil, olio idraulico DIN 51524
Viscosi <i>Viscosità</i>	From 2 up to 10.000 cSt ⁽⁴⁾ <i>Da 2 fino a 10.000 cSt⁽⁴⁾</i>	
Seals <i>Guarnizioni</i>	NBR, FKM, EPDM ⁽⁵⁾	
Aco s ic Emissions <i>Emissioni Acustiche</i>	From 52 up to 68 db(A) at 2.950 rpm (value based on ISO 4412 test procedure) <i>Da 52 fino a 68 db(A) a 2.950 rpm (ISO 4412 test)</i>	
P mp bod <i>Corpo pompa</i>	Extruded aluminum alloy <i>Alluminio estruso</i>	
P mp bod (special applica ions) <i>Corpo pompa (applicazioni speciali)</i>	Cast iron, steel. Hardened steel and stainless steel available on request. <i>Ghisa, acciaio. Acciaio temprato e acciaio inox su richiesta.</i>	
Scre s <i>Viti</i>	Steel for main screw , idler cast iron <i>Acciaio vite principale, ghisa viti secondarie</i>	
Scre s (special applica ions) <i>Viti (applicazioni speciali)</i>	Core hardened steel screws, surface treated screws <i>Viti in acciaio temprato, viti trattate superficialmente</i>	
En ironmen empera re <i>Temperatura ambiente</i>	From -50° up to +60°C <i>Da -50° a +60°C</i>	
H dra lic Tempera re <i>Temperature olio</i>	From -50°C up to +300°C <i>Da -50°C a +300°C</i>	
Fil ra ion <i>Filtrazione</i>	Permissible degree of fluid contamination NAS to 1638 class 10 or ISO DIS 4406 – 19/16. Recommended filtration $\beta_{25} \geq 75$ <i>Contaminazione NAS tipo 1638 classe 10 o ISO DIS 4406 – 19/16 . Filtrazione raccomandata $\beta_{25} \geq 75$</i>	

All data reported by catalogue can change without any notice. *I dati presenti nel catalogo possono cambiare senza preavviso.*

(1) For shaft speed lower than 1.000 rpm and over 1.800 rpm please contact us. *Per velocità inferiori a 1.000 rpm e maggiori di 1.800 rpm contattare la casa.*

(2) For higher pressure please contact us. *Per pressioni maggiori contattare la casa*

(3) For request of different fluids please contact us. *Per l'utilizzo di diversi fluidi contattare la casa.*

(4) For level of viscosity lower than 20 cSt and over 320 cSt please contact us. *Per livelli di viscosità inferiori a 20 cSt e superiori a 320 cSt contattare la casa.*

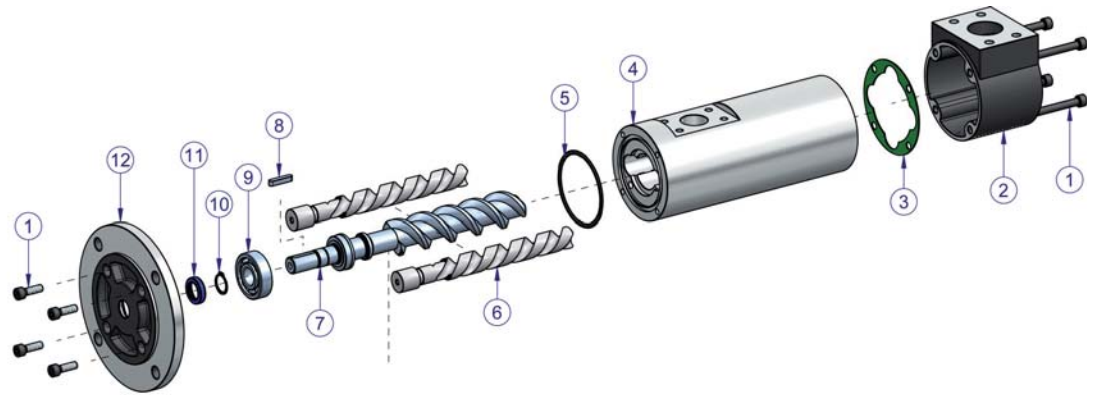
(5) For special seals, contact us. *Per tenute speciali, contattare la casa.*

Product description / Descrizione prodotto

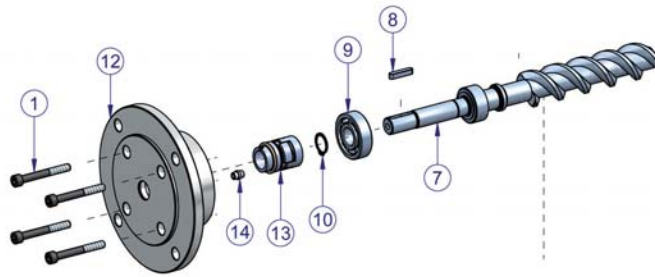
DIFFERENT COMBINATIONS OF SMT PUMP / DIFFERENTI COMBINAZIONI DELLA POMPA SMT

Flange configurations view / Configurazioni flangia

A



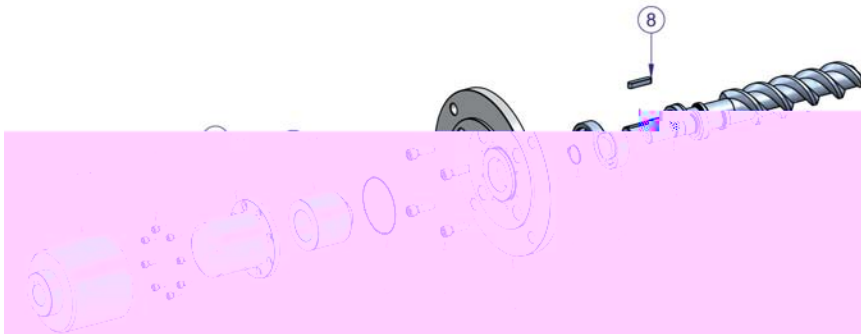
B



C



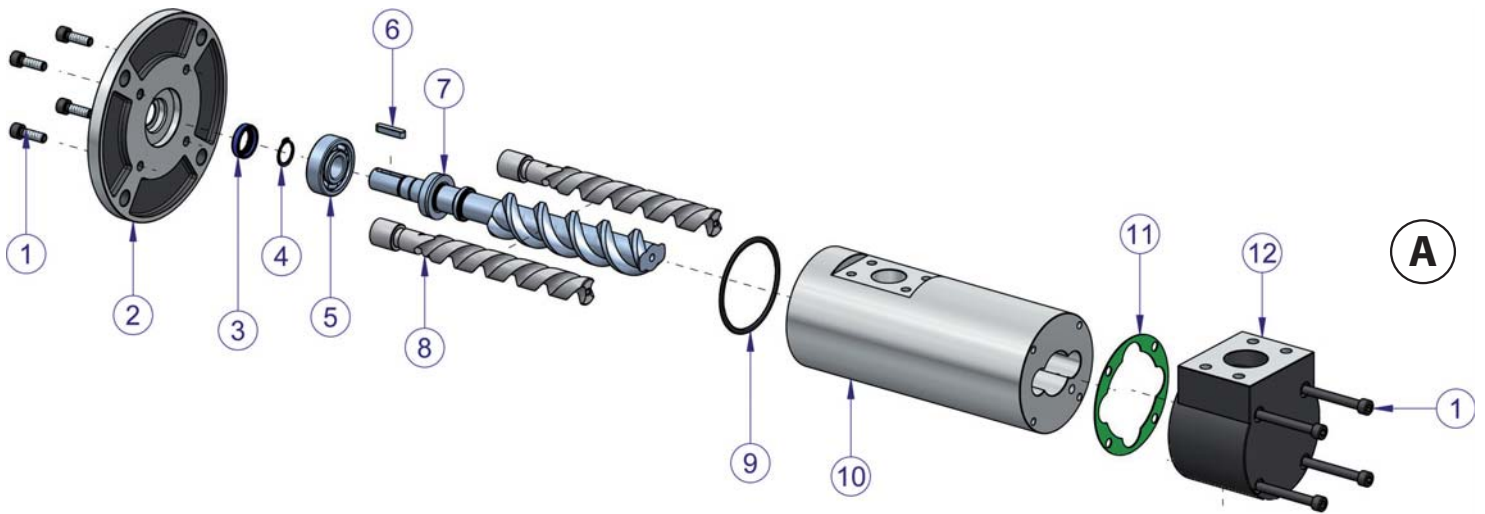
D



Product description / Descrizione prodotto

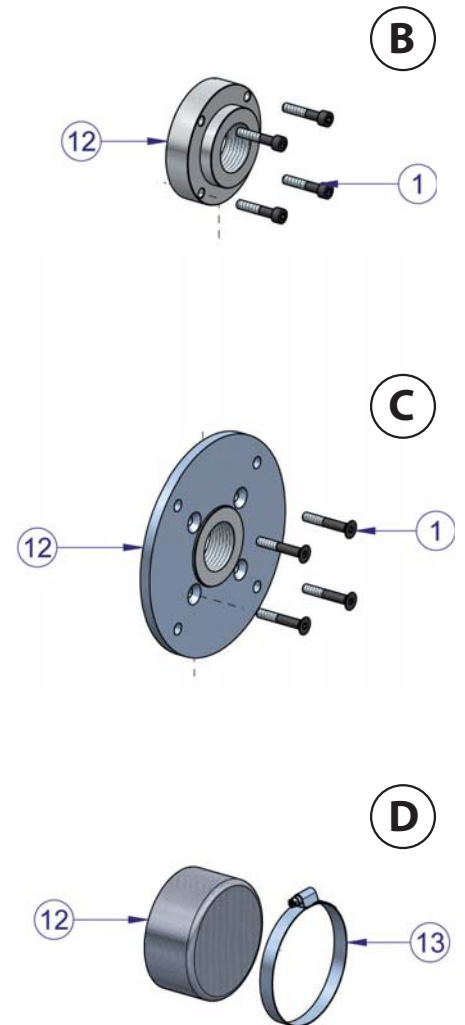
N°	Parts description / Descrizione componenti	Material / Materiale
1	Screw / Vite	Common components
2	Radial suction cover / Tappa radiale	Common components
3	Plane gasket / Guarnizione piana	Common components
4	Pump body / Corpo pompa	Common components
5	O-ring / Anello O-ring	Common components
6	Idler screw / Vite laterale	Common components
SMT (A)		
7	Main screw / Vite centrale	Common components
8	Key / Linguetta	Common components
9	Ball bearing / Cuscinetto	Common components
10	Seeger	Common components
11	Seal / Anello di tenuta	Common components
12	Flange / Flangia	Common components
1	Screw / Vite	Common components
SMT MECHANICAL SEAL (B) / SMT TENUTA MECCANICA (B)		
7	Main screw / Vite centrale	Common components
8	Key / Linguetta	Common components
9	Ball bearing / Cuscinetto	Common components
10	Seeger	Common components
13	Mechanical seal / Tenuta meccanica	Common components
14	Driving oil bushing / Boccola convoglia olio	Common components
12	Flange / Flangia	Common components
1	Screw / Vite	Common components
SMT HOLLOW SHAFT (C) / SMT ALBERO CAVO (C)		
7	Main screw / Vite centrale	Common components
9	Ball bearing / Cuscinetto	Common components
10	Seeger	Common components
11	Seal / Anello di tenuta	Common components
12	Flange / Flangia anteriore	Common components
1	Screw / Vite	Common components
SMT MAGNETIC COUPLING (D) / SMT GIUNTO MAGNETICO (D)		
7	Main Screw / Vite centrale	Common components
8	Key / Linguetta	Common components
9	Ball bearing / Cuscinetto	Common components
10	Seeger	Common components
12	Flange / Flangia anteriore	Common components
1	Screw / Vite	Common components
5	O-ring / Anello O-ring	Common components
15	Internal rotor MC / Rotore interno MC	Common components
16	Containment shroud MC / Cappuccio MC	Common components
1	Screw / Vite	Common components
17	External rotor MC / Rotore esterno MC	Common components

Product description / Descrizione prodotto



Suction configurations view / Configurazioni aspirazione pompa

N°	DESCRIPTION/DESCRIZIONE	MATERIAL* / MATERIALE*
1	Screw / Vite	Common components
2	Flange / Flangia anteriore	Common components
3	Seal / Anello di tenuta	Common components
4	Seeger	Common components
5	Ball bearing / Cuscinetto	Common components
6	Key / Linguetta	Common components
7	Main screw / Vite centrale	Common components
8	Idler screw / Vite laterale	Common components
9	O-ring / Anello O-ring	Common components
10	Pump body / Corpo pompa	Common components
11	Plane gasket / Guarnizione piana	Common components
SMT (A)		
12	Radial suction cover / Tappa radiale	Common components
1	Screw / Vite	Common components
SMT AX (AXIAL BSPP) (B) / SMT AX (ASSIALE BSPP) (B)		
1	Screw / Vite	Common components
12	Axial suction cover / Tappa assiale	Common components
SMT AL (TOP FLANGE FOR VERTICAL INSTALLATION OVER TANK) (C) SMT AL (TAPPA ASPIRAZIONE PER INSTALLAZIONE VERTICALE SOPRA SERBATOIO) (C)		
1	Screw / Vite	Common components
12	Tank top flange / Tappa aspirazione sopra serbatoio	Common components
SMIT SUBMERSIBLE (D) / SMIT SOMMERSA (D)		
12	Filter / Filtro	Common components
13	Clamp / Fascetta	Common components



All data reported by catalogue can change without any notice. I dati presenti nel catalogo possono cambiare senza preavviso.

* Others materials available upon request. Altri materiali disponibili su richiesta.

INDUSTRIAL LUBE SERVICES

Power hydraulics (presses, machine tools, working machines rolling mill, dumping equipment, elevators, variable pitch propellers, hydraulic winches)
Power unit & mini power packs
Injection molding machinery (cooling & filtration systems)
Hydraulic governors
Cooling, heating, recycling
Driving and filtering
Process technology and chemistry

High pressure coolant fuel oil handling
Filtration applications
Chip conveyors
Turbine lubrication and oil jacking
Hydro power (turbines & compressor lubrication power)
Paper & Pulp (lubrication & filtration)
Gear box lube and filtration system (high viscosity lube, air emulsion, heavy duty applications)



POWER GENERATION

Lube oil service
Control oil service
Turbine shaft jacking service
Sealing oil service for gas turbine
Fuel unloading station
Fuel transfer
Fuel feeding
Burner operations service
Filtration & cooling



MARINE

Off-line filtration
Off-line filtration cart and trolleys
Filtration & oil transfer
Fuel service
Lube oil circulation service
Lubricating liquids (machines, turbines, gear sets, motors)



WIND MILLS

Cooling systems
Hydraulic pitch control and yaw control
Forced lubrication systems



OIL & GAS

Oil filtration & cooling , oil and fuel oil lubrication
Oil rigs, refineries (transport, meter and mix), off-shore platform
Petrochemical industry, transfer service.



SMT pump - Dimensional drawings / Disegni dimensionali

SMT Pump

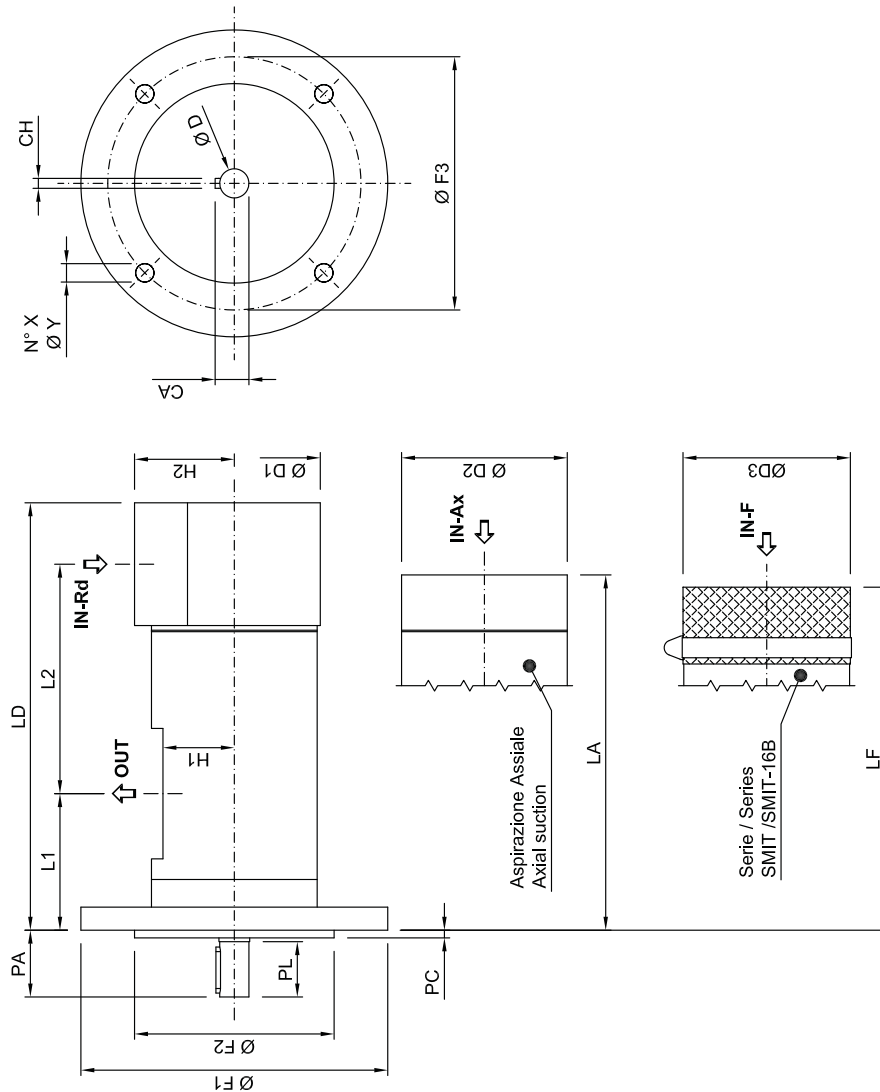


SMT Series / Serie SMT
Dry screw pump
Pompa per uso esterno

SMIT Pump



SMIT Series / Serie SMIT
Submersible screw pump
Pompa per uso sommerso



SMT pump - Dimensional drawings / Disegni dimensionali

SMT Series / Serie SMT	Dry screw pump / Pompa per uso esterno	SMT Series/Serie SMIT	Submersible screw pump/ Pompa per uso sommerso	Pump Pompa																	
				Flange Flangia				Shaft Albero				Suction Aspirazione		Discharge Mandata		Pump Pompa					
Type/Tipologia	ØF2	ØY	ØF3	ØF1	PL	ØD	CA	CH	IN-Rd	IN-Ax	H2	OUT	H1	PA	ØD2	L1	L2	LA	Kg	ØD3	LF
GR20 SMT 8L-12L-15L-20L- 23L	80.0	11.0	103.0	125.0	30.0	14.0	16.0	5.0	1/2" BSPP	1/2" BSPP	26.0	1/2" BSPP	25.0	37.0	59.0	53.0	118.5	174.0	1.5	60.0	173.0
GR25 SMT 25L-30L	80.0	11.0	103.0	125.0	36.0	19.0	21.5	6.0	3/4" BSPP	3/4" BSPP	27.0	1/2" BSPP	27.5	42.0	65.0	72.5	171.0	262.0	4	66.0	242.5
GR32 SMT 35L-45L-55L- 75L	100.0	11.0	125.0	150.0	35.0	19.0	21.5	6.0	1" 1/4 SAE - 3000	1" 1/4 SAE - 3000	55.0	1" SAE - 3000	41.0	41.0	94.0	69.0	192.0	248.0	6.5	95.0	239.0
GR40 SMT 100L-125L-150L	125.0	14.0	160.0	188.0	34.0	19.0	21.5	6.0	1" 1/2 SAE - 3000	1" 1/2 SAE - 3000	65.0	1" 1/4 SAE - 3000	46.5	39.5	108.0	84.5	224.5	302.0	10.8	109.0	294.0
GR45 SMT 180L-210L	125.0	14.0	160.0	188.0	55.0	32.0	35.0	10.0	2" SAE - 3000	2" BSPP	85.0	1" 1/2 SAE - 3000	51.5	64.5	122.5	89.0	248.0	330.0	15	123.5	312.0
GR55 SMT 250L-300L- 330L-380L	160.0	18.0	200.0	235.0	55.0	32.0	35.0	10.0	2" 1/2 SAE - 3000	2" 1/2 BSPP	95.0	2" SAE - 3000	55.0	61.5	142.5	100.5	297.0	385.5	23.5	143.5	395.5
GR60 SMT 440L-500L	160.0	18.0	200.0	235.0	55.0	32.0	35.0	10.0	3" SAE - 3000	3" BSPP	105.0	2" 1/2 SAE - 3000	63.0	65.5	155.0	101.0	342.0	423.5	30	154.0	430.5
GR70 SMT 600L-660L-800L	200.0	22.0	250.0	300.0	55.0	32.0	35.0	10.0	3" 1/2 SAE - 3000	3" 1/2 BSPP	110.0	3" SAE - 3000	73.0	60.5	180.0	115.5	422.0	529.5	44	179.0	543.5
GR80 SMT 1.000L-1.200L	200.0	22.0	250.0	300.0	60.0	38.0	41.0	10.0	4" SAE - 3000	4" BSPP	125.0	3" SAE - 3000	83.0	75.0	210.0	150.0	470.5	644.0	59	204.0	628.0
GR90 SMT 1.220L	200.0	22.0	250.0	300.0	60.0	38.0	41.0	10.0	4" SAE - 3000	4" BSPP	125.0	3" SAE - 3000	83.0	75.0	210.0	150.0	470.5	644.0	61	204.0	628.0

All data reported by catalogue can change without any notice. I dati presenti nel catalogo possono cambiare senza preavviso.

SMT AC pumps - Dimensional drawings / Disegni dimensionali

SMT AC Pump

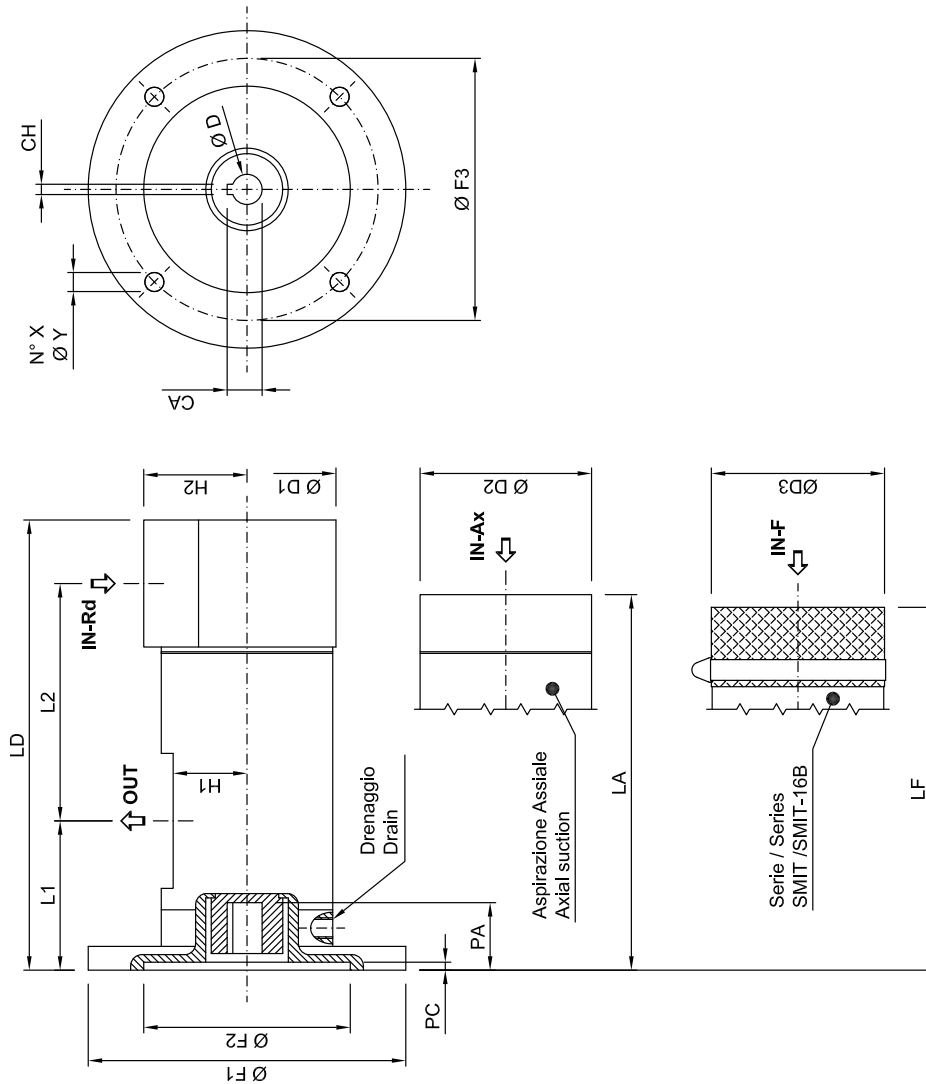


SMT AC Series / Serie SMT AC
Dry screw pump
Pompa per uso esterno

SMIT AC Pump



SMIT AC Series / Serie SMIT AC
Submersible screw pump
Pompa per uso sommerso



SMT AC pumps - Dimensional drawings / Disegni dimensionali

SMT AC Series/
Serie AC SMT
Submersible screw pump/
Pompa per uso sommerso

SMT AC Series / Serie SMT AC

Dry screw pump / Pompa per uso esterno

Type/Tipologia	Flange/Flangia			Shaft / Albero			Suction / Aspirazione			Discharge / Mandata		Pump / Pompa					Pump / Pompa			
	ØF2	ØY	ØF3	ØF1	ØD	CA	CH	IN-Rd	IN-AX	H2	OUT	H1	PA	ØD2	L1	L2	LA	Kg	ØD3	LF
GR20 SMT AC11 B5 8-12-15-20-23	95.0	9.0	115.0	140.0	11.0	12.8	4.2	1/2" BSPP	1/2" BSPP	26.0	1/2" BSPP	25.0	25.0	59.0	57.0	118.5	178.0	1.5	60.0	177.0
GR20 SMT AC14 B5 8-12-15-20-23	110.0	9.5	130.0	160.0	14.0	16.1	5.2	1/2" BSPP	1/2" BSPP	26.0	1/2" BSPP	25.0	33.5	59.0	56.0	118.5	177.0	1.5	60.0	176.0
GR20 SMT AC19 B5 8-12-15-20-23	130.0	11.0	165.0	200.0	19.0	21.7	6.5	1/2" BSPP	1/2" BSPP	26.0	1/2" BSPP	25.0	42.0	59.0	75.0	118.5	196.0	1.5	60.0	195.0
GR25 SMT AC14 B5 25-30	110.0	9.5	130.0	160.0	14.0	16.2	5.2	3/4" BSPP	3/4" BSPP	27.0	1/2" BSPP	27.5	32.5	65.0	73.5	171.0	263.0	2.7	66.0	243.5
GR25 SMT AC19 B5 25-30	130.0	10.5	165.0	200.0	19.0	21.9	6.5	3/4" BSPP	3/4" BSPP	27.0	1/2" BSPP	27.5	42.5	65.0	76.5	171.0	266.0	2.7	66.0	246.5
GR32 SMT AC19 B5 35-45-55-75	130.0	12.0	165.0	200.0	19.0	21.9	6.5	1" 1/4 SAE - 3000	1" 1/4 BSPP	55.0	1" SAE - 3000	41.0	43.7	94.0	92.7	192.0	271.7	4.4	95.0	262.7
GR32 SMT AC24 B5 35-45-55-75	130.0	12.0	165.0	200.0	24.0	27.3	8.5	1" 1/4 SAE - 3000	1" 1/4 BSPP	55.0	1" SAE - 3000	41.0	52.7	94.0	92.7	192.0	271.7	4.4	95.0	262.7
GR40 SMT AC19 B5 100-125-150	130.0	12.0	165.0	200.0	19.0	22.0	6.5	1" 1/2 SAE - 3000	1" 1/2 BSPP	65.0	1" 1/4 SAE - 3000	46.5	42.5	108.0	109.5	224.5	327.0	7	109.0	319.0
GR40 SMT AC24 B5 100-125-150	130.0	12.0	165.0	200.0	24.0	27.5	8.5	1" 1/2 SAE - 3000	1" 1/2 BSPP	65.0	1" 1/4 SAE - 3000	46.5	52.5	108.0	109.5	224.5	327.0	7	109.0	319.0
GR40 SMT AC28 B5 100-125-150	180.0	14.0	215.0	250.0	28.0	31.5	8.5	1" 1/2 SAE - 3000	1" 1/2 BSPP	65.0	1" 1/4 SAE - 3000	46.5	64.0	108.0	120.0	224.5	337.5	7	109.0	329.5
GR45 SMT AC28 B5 180-210	180.0	14.0	215.0	250.0	28.0	31.5	8.5	2" SAE - 3000	2" BSPP	85.0	1" 1/2 SAE - 3000	51.5	63.5	122.5	120.0	248.0	361.0	7	123.5	343.0
GR45 SMT AC38 B5 180-210	230.0	15.0	265.0	300.0	38.0	42.0	10.5	2" SAE - 3000	2" BSPP	85.0	1" 1/2 SAE - 3000	51.5	81.0	122.5	133.5	248.0	374.5	7	123.5	356.5
GR55 SMT AC28 B5 250-300-330-380	180.0	14.0	215.0	250.0	28.0	31.5	8.5	2" 1/2 SAE - 3000	2" 1/2 BSPP	95.0	2" SAE - 3000	55.0	62.5	142.5	125.5	297.0	410.5	15.5	143.5	420.5
GR55 SMT AC38 B5 250-300-330-380	230.0	15.0	265.0	300.0	38.0	42.0	10.5	2" 1/2 SAE - 3000	2" 1/2 BSPP	95.0	2" SAE - 3000	55.0	82.5	142.5	145.5	297.0	410.5	15.5	143.5	440.5
GR60 SMT AC28 B5 440-500	180.0	14.0	215.0	250.0	28.0	31.5	8.5	3" SAE -3000	3" BSPP	105.0	2" 1/2 SAE - 3000	63.0	65.0	155.0	126.0	342.0	448.5	25	154.0	455.5
GR60 SMT AC38 B5 440-500	230.0	14.5	265.0	300.0	38.0	41.8	10.5	3" SAE -3000	3" BSPP	105.0	2" 1/2 SAE - 3000	63.0	83.0	155.0	146.0	342.0	468.5	25	154.0	475.5
GR70 SMT AC28 B5 600-660-800	180.0	14.0	215.0	250.0	28.0	31.5	8.5	3" 1/2 SAE - 3000	3" 1/2 BSPP	110.0	3" SAE - 3000	73.0	63.1	180.0	139.3	422.0	553.3	30	179.0	567.3
GR70 SMT AC38 B5 600-660-800	230.0	14.5	265.0	300.0	38.0	41.8	10.5	3" 1/2 SAE - 3000	3" 1/2 BSPP	110.0	3" SAE - 3000	73.0	87.3	180.0	160.5	422.0	574.5	30	179.0	588.5

All data reported by catalogue can change without any notice. I dati presenti nel catalogo possono cambiare senza preavviso.

Suction and drain configuration / Configurazioni aspiraz. e drenaggio

Suction and drain hole configuration available as per table below (orientations relative to pressure port).

Configurazioni di porte di aspirazione, mandata e drenaggio. Vedi tabella sotto.

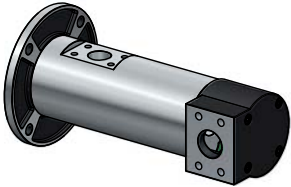
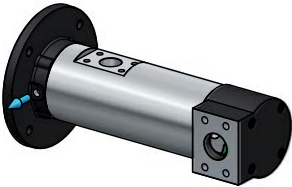
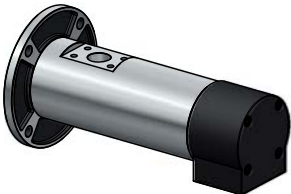
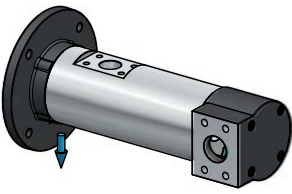
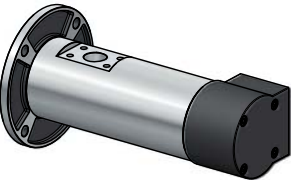
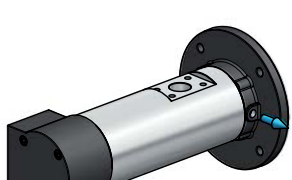
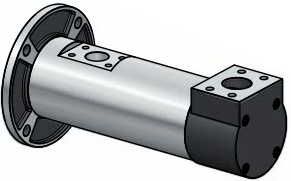
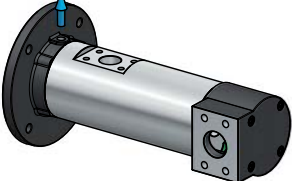
Standard configuration / Configurazioni standard

Standard configuration: T1 – D2

Configurazione standard: T1 – D2

Standard configuration for pumps WITH RP VALVE: T4 – D2

Configurazione standard per pompa CON VALVOLA RP: T4 – D2

SUCTION CONFIGURATION CODES / CODICI CONFIGURAZIONE ASPIRAZIONE		DRAIN CONFIGURATION CODES / CODICI CONFIGURAZIONE DRENAGGIO	
	T1		D1
	T2		D2
	T3		D3
	T4		D4

We recommend, in case of request of pump with RP valve (external variable regulation valve), to choose very carefully the suction and drain configuration. Once the external valve is built on the pump it will be not possible any change of both configurations.

Raccomandiamo di scegliere attentamente la configurazione delle porte nel caso di pompa con valvola RP (valvola regolazione variabile esterna). La valvola RP impedisce di modificare l'orientamento delle porte una volta installata sulla pompa.

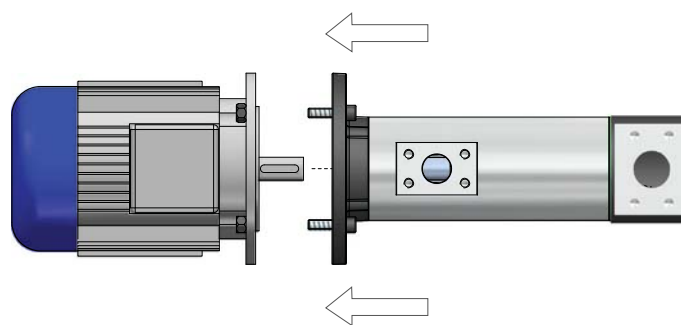
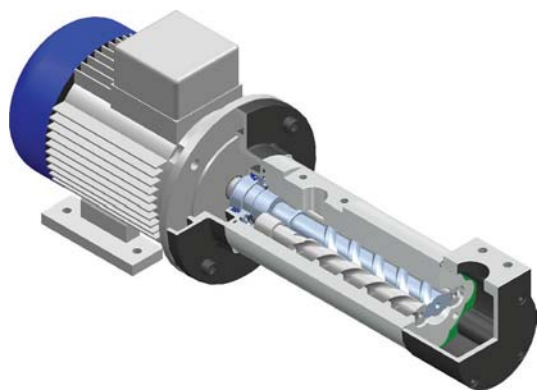


Motor pump selection / Selezione motore

Please check the table below to select the right motor.

Controllare la tabella per selezionare il motore adatto.

Si e	Mo or form <i>Forma motore</i>	56 AC9	63 AC11	71 AC14	80 AC19	90 AC24	100 AC28	112 AC28	132 AC38
GR 20	B14	✓	✓	✓	✓				
	B5		✓	✓	✓				
GR 25	B14			✓	✓				
	B5			✓	✓				
GR 32	B14				✓	✓			
	B5				✓	✓			
GR40	B14				✓	✓	✓	✓	
	B5				✓	✓	✓	✓	
GR45	B5						✓	✓	✓
GR55	B5						✓	✓	✓
GR60	B5						✓	✓	✓
GR70	B5						✓	✓	✓



IEC standard motor

Ordering code table / Tabella codici di ordinazione

Pump type Tipo	Pump model Modello	Nominal flow Portata nominale	High viscosity flag Alta viscosità	Shaft type Tipo albero	Hollow shaft flange Flangia albero cavo	Pump body** Corpo pompa**	Seals (shaft, O-ring) Guarnizioni (albero, anello di tenuta)	Screw treatment Trattamento viti	Mechanical shaft seal Tenuta meccanica	Suction configuration code Codice porta aspirazione	Drain configuration codes (hollow shaft only) Codici drenaggio (solo AC)	Internal pressure relief valve Valvola interna di sicurezza	Suction flange Flangia d'aspirazione	Rotation Rotazione	Bearing type Tipo cuscinetto
GR20		8L, 12L, 15L, 20L, 23L		Standard normal shaft & flange type albero maschio e flangia (none)		Standard aluminium Alluminio (none)		Standard steel main screw cast iron idler screws vite centrale in acciaio viti laterali in ghisa (none)	Standard (none)	Standard T1 (none)	Standard D2 (none)	Standard No security valve Nessuna valvola (none)	Standard radial radiale (none)	Standard Clockwise destra (none)	Standard (none)
		25L, 30L													
GR25		35L, 45L, 55L, 75L													
GR32		100L, 125L, 150L													
GR40		180L, 210L													
GR45	SMT dry esterna				B5 B14 (only hol- low shaft) (solo albero cavo)										
GR55	SMT submersible sommersa														
GR60		250L, 300L, 330L, 380L		Optional hollow shaft type* Albero cavo* AC9 AC11 AC14 AC19 AC24 AC28 AC38				Optional HA*** core hardened steel screws (available only with mechani- cal seal) viti in acciaio temprato (solo con TM)	Optional TM*** mechanical seal (avail- able only with male shaft) tenuta mec- canica (solo con albero maschio)	Optional T2 T3 T4	Optional D1 D3 D4	Optional RF1 5 bar security sicurezza 5 bar RF2 10 bar security sicurezza 10 bar RF3 15 bar security sicurezza 15 bar RP**** variable regulation valve valvola esterna a regolazione variabile	Optional AX axial SAE assiale SAE AX axial BSPP assiale BSPP AL tank-top flange tappa d'aspirazione sopra serba- toio	Optional SX counter clockwise sinistra	Optional CS encapsu- lated ball bearing cuscinetto scher- mato
GR60		440L, 500L													
GR70		600L, 660L, 800L													
GR80		1.000L, 1.200L													
GR90		1.220L													

* To request the right hollow shaft according to the pump model please check chapter "Motor pump selection". Per richiedere il giusto tipo di albero cavo in base al modello di pompa vedere il capitolo "Selezione motore".

** Please contact us for different available materials and treatments. Contattare la fabbrica per differenti materiali e trattamenti disponibili.

*** Options HA and TM are not available for version SMT AC. Le opzioni HA e TM non sono disponibili per i modelli SMT AC.

**** RP valve not available for GR80 and GR90. Valvola RP non disponibile per GR80 e GR90.

***** RP valve is not available with options AX and AL. La valvola RP non è disponibile con le opzioni AX e AL.

Ordering code table / Tabella codici di ordinazione

Samples application summary / Esempi possibili per applicazioni

Fluid applications/ Applicazioni fluidi	High viscosity configuration- Configurazione per elevate viscosità	Body material Materiale corpo	Screw material Materiale viti	Seals Tenute	Bearing type Tipo cuscinetto
Diesel fuel, marine distillate fuel, marine residual fuel, low viscosity fuel oil <i>Diesel, distillati marini, residui marini, carburanti, fuel oil a bassa viscosità</i>	-	G/GZ ¹	HA	TM	*
Heavy fuel oil transfer <i>Trasferimento di olio combustibile</i>	SN	G	HD	TM	*
Lube services high viscosity – gearboxes air emulsion <i>Lubrificazione ad alta viscosità – emulsioni aria per ingranaggi</i>	SN	*	*	*	*
Water glycole / <i>Emulsioni acqua-glicole</i>	-	G/GZ ¹	HA	TM	CS
Machine tools – coolant systems <i>Macchine utensili – sistemi lubrorefrigeranti</i>	-	G	HA	TM	CS

All data reported by catalogue can change without any notice. *I dati presenti nel catalogo possono cambiare senza preavviso.*

¹ Contact us for high pressure applications. *Contattare la fabbrica per applicazioni ad alta pressione.*

*Standard configuration and material. *Configurazione e materiali standard.*

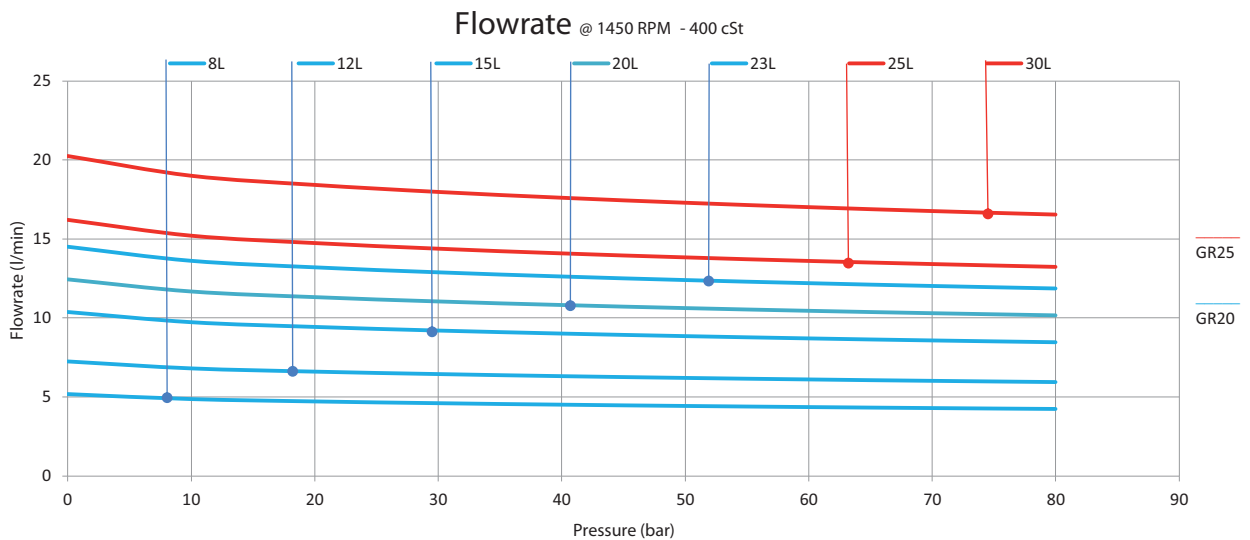
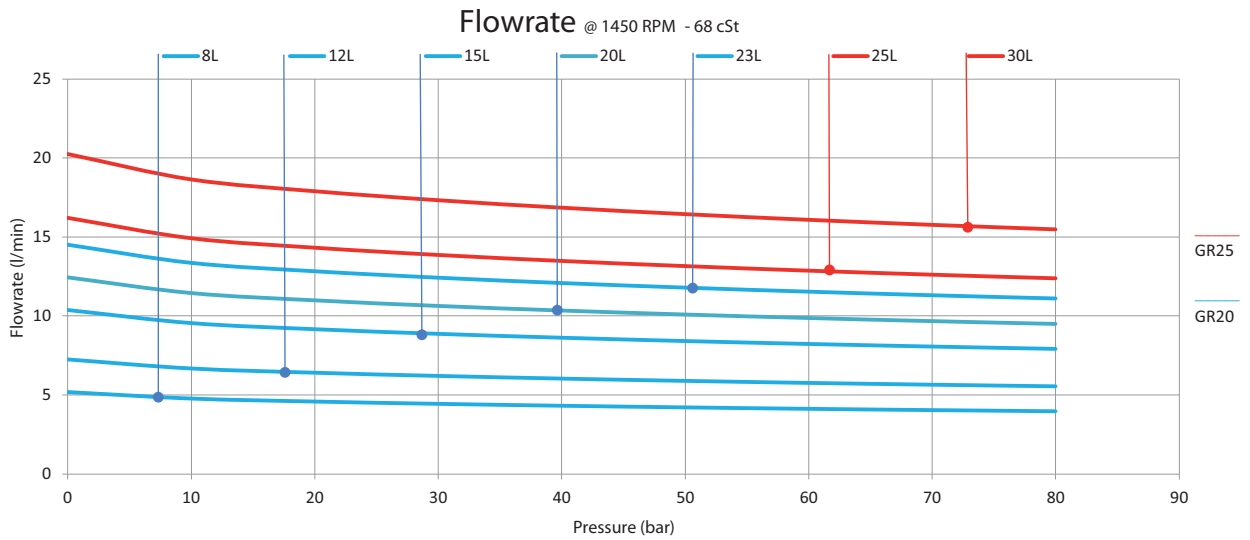
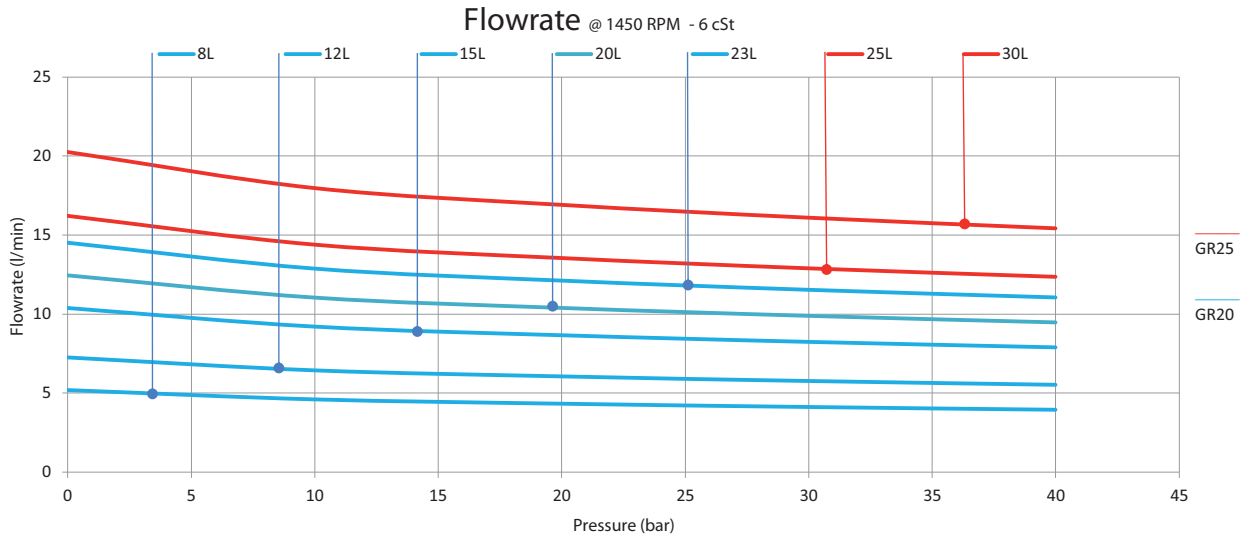
Example of codes normal shaft / Esempi di codici albero maschio:

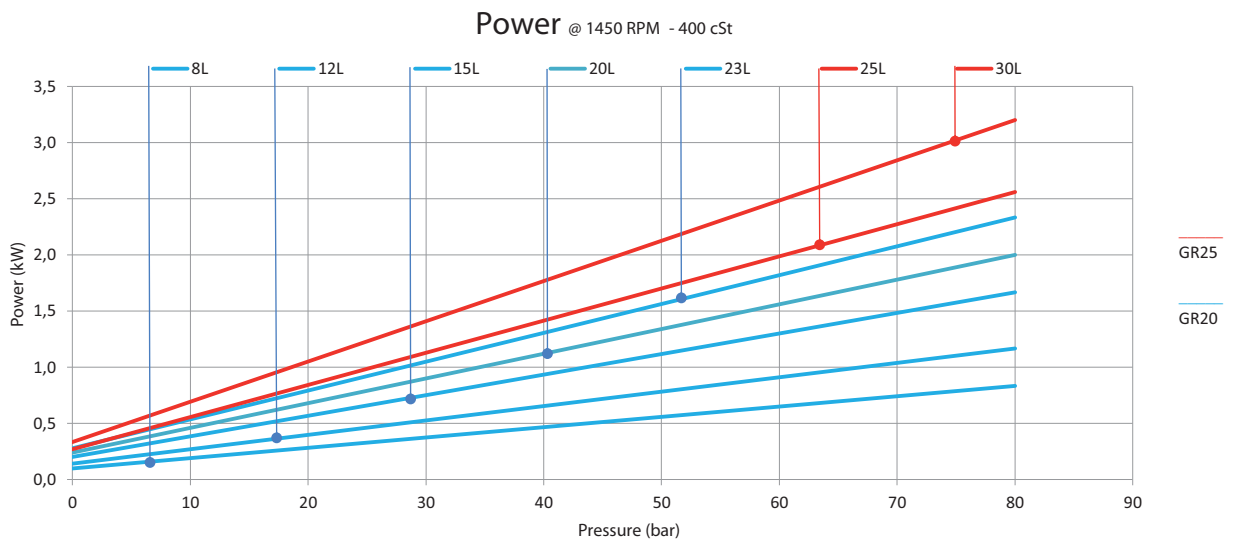
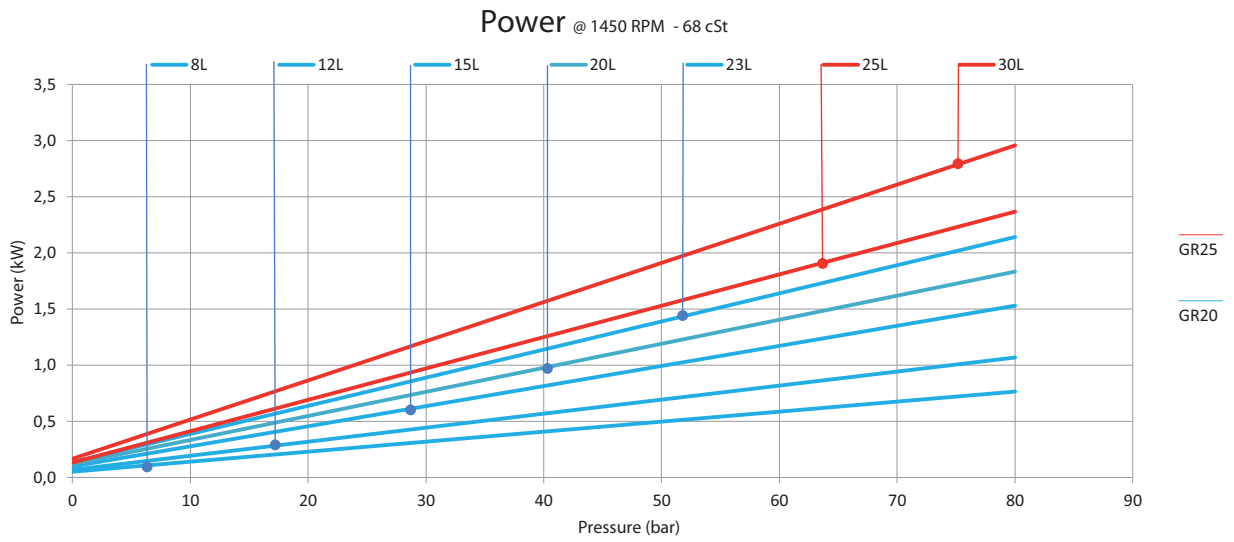
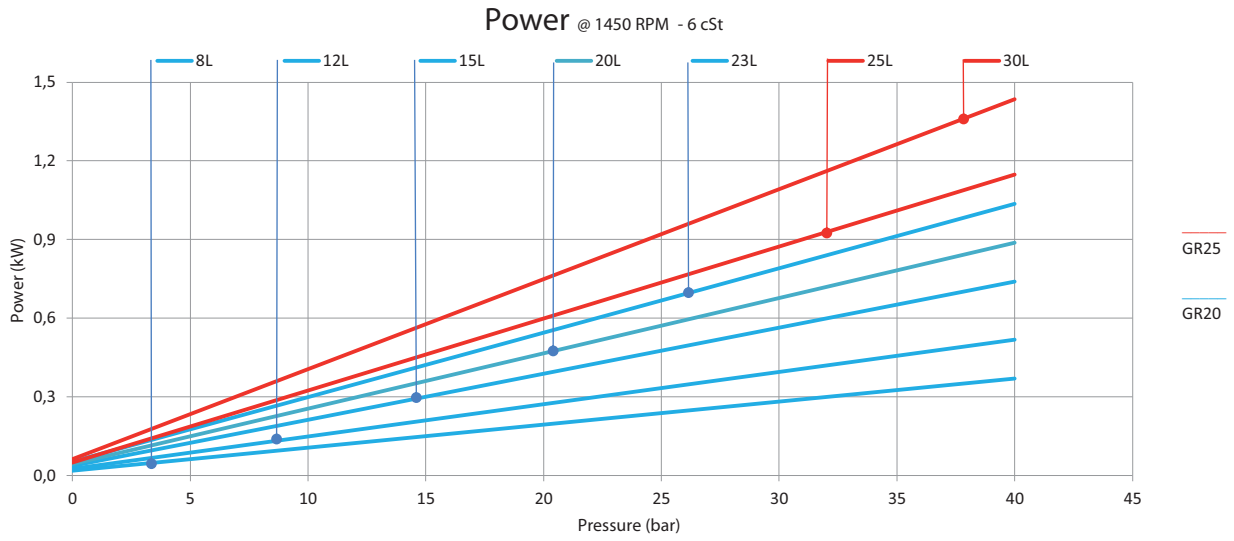
GR45 SMT 210L G HD TM

Example of codes for hollow shaft models / Esempi di codici per modelli ad albero cavo:

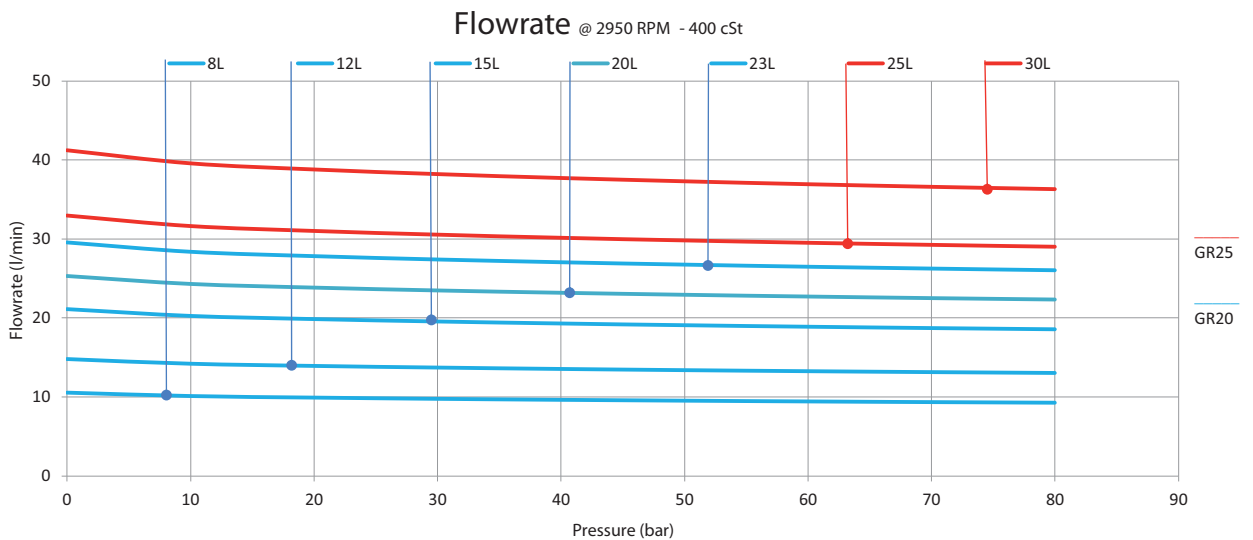
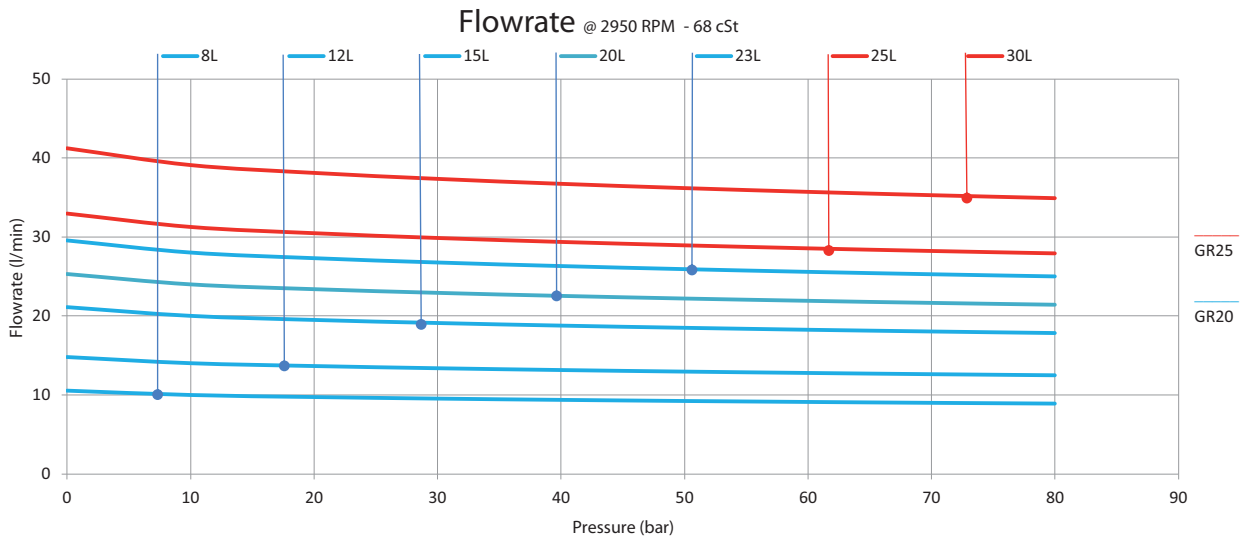
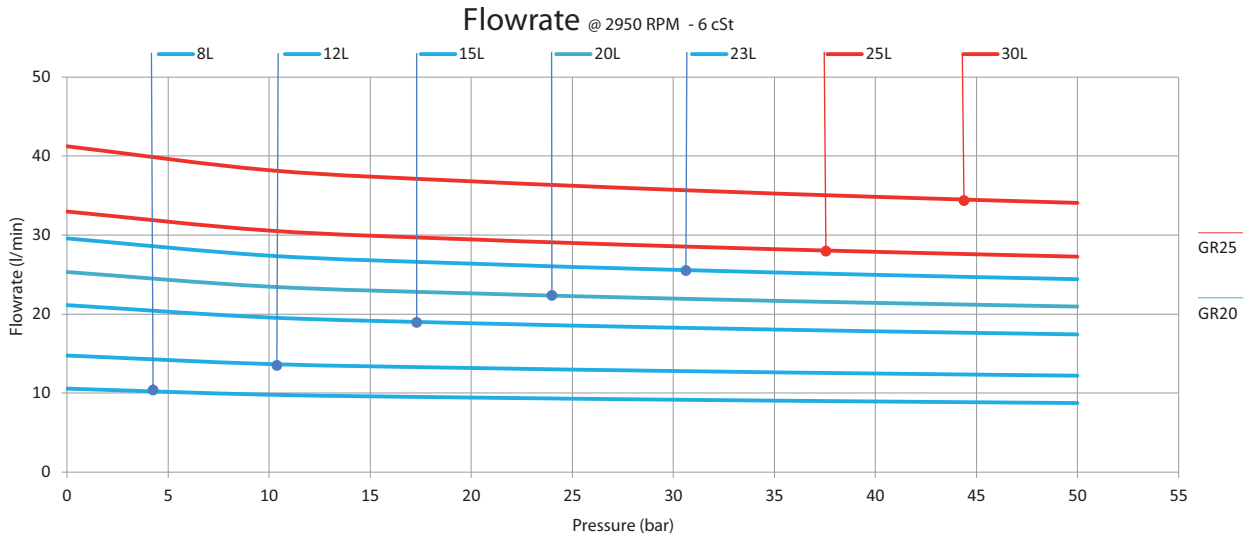
GR32 SMT 45L AC24/B5 G V

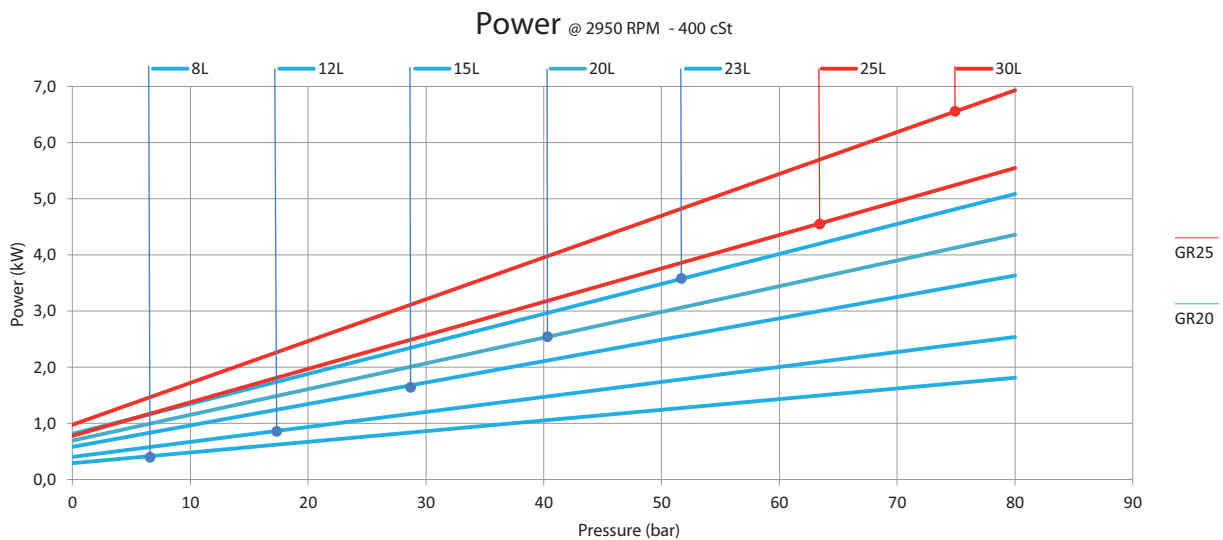
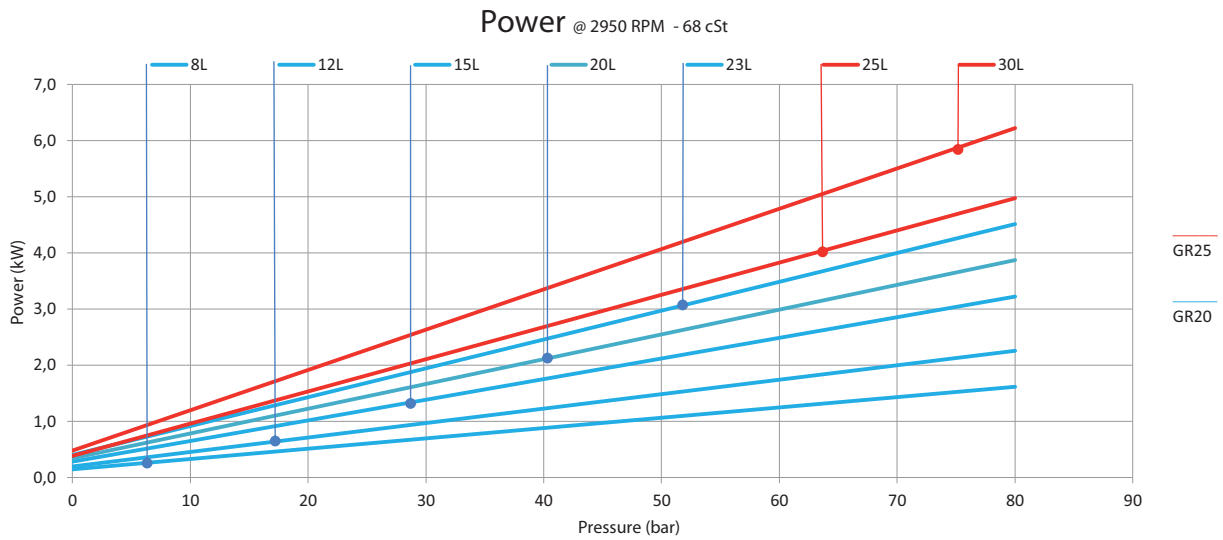
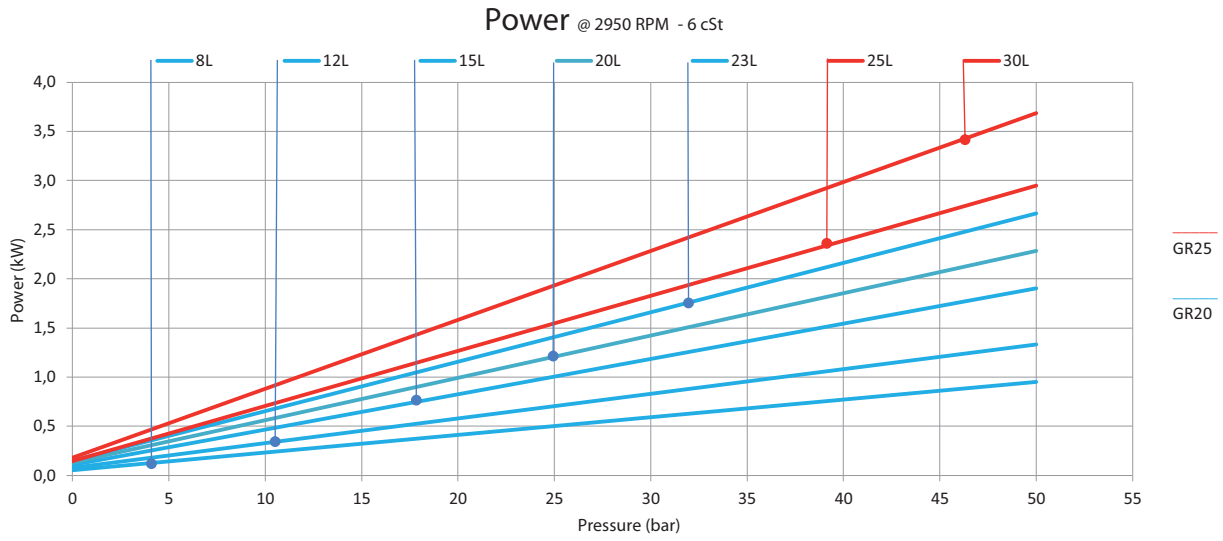
Performances @ 1500 - GR 20-25



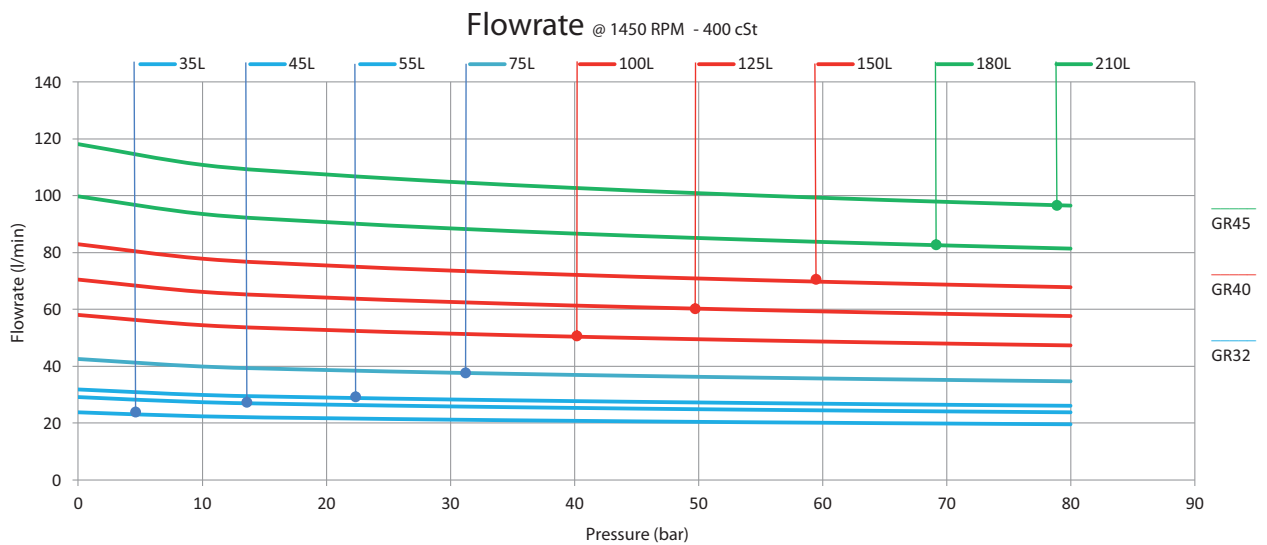
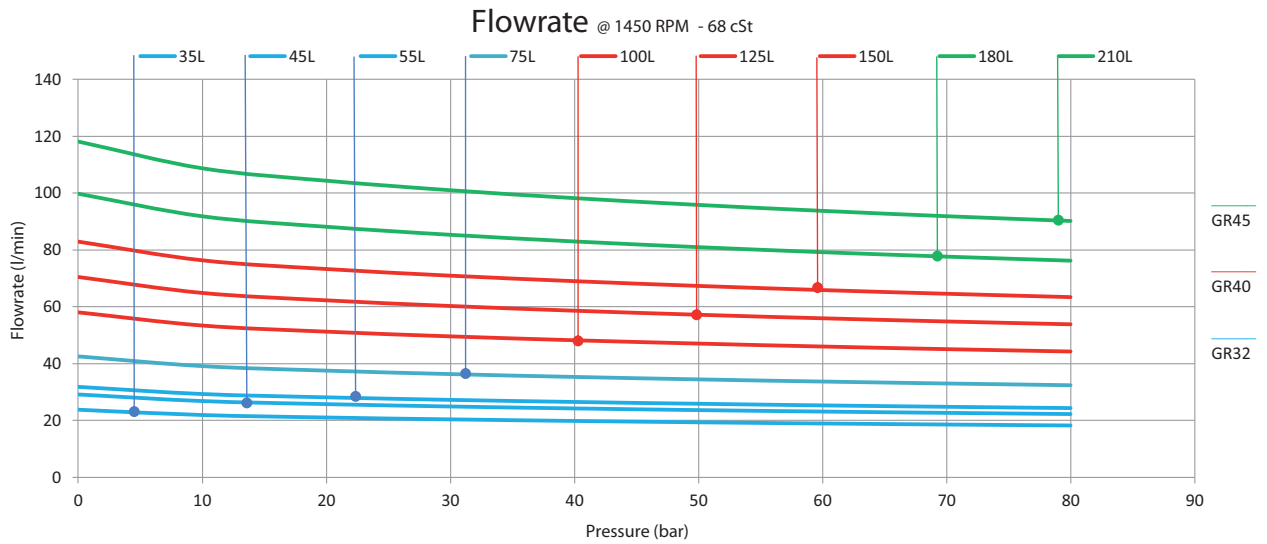
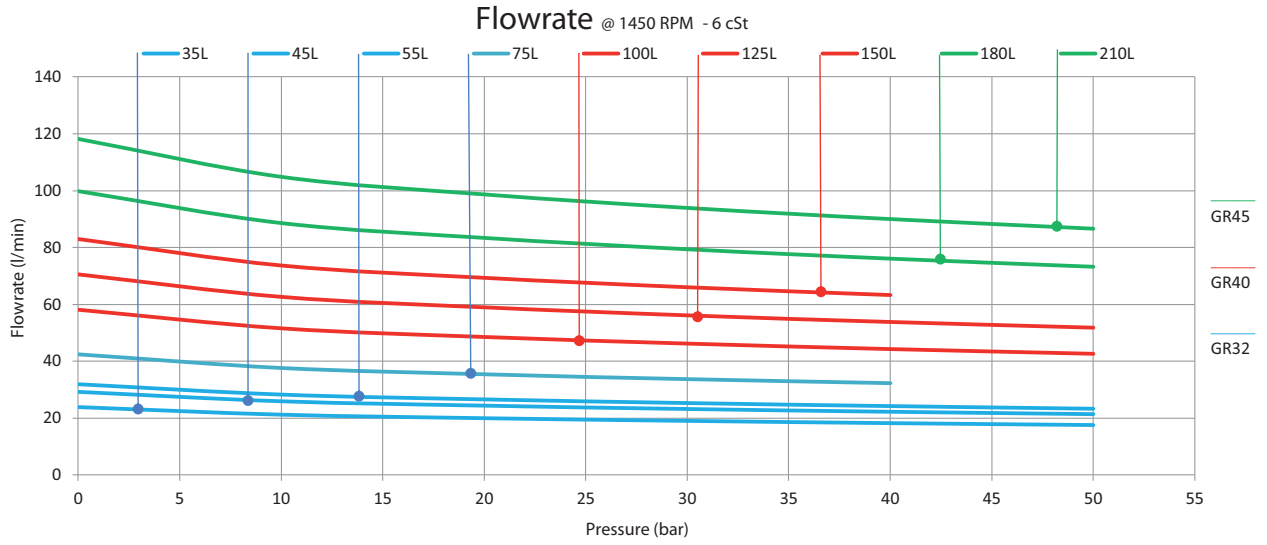


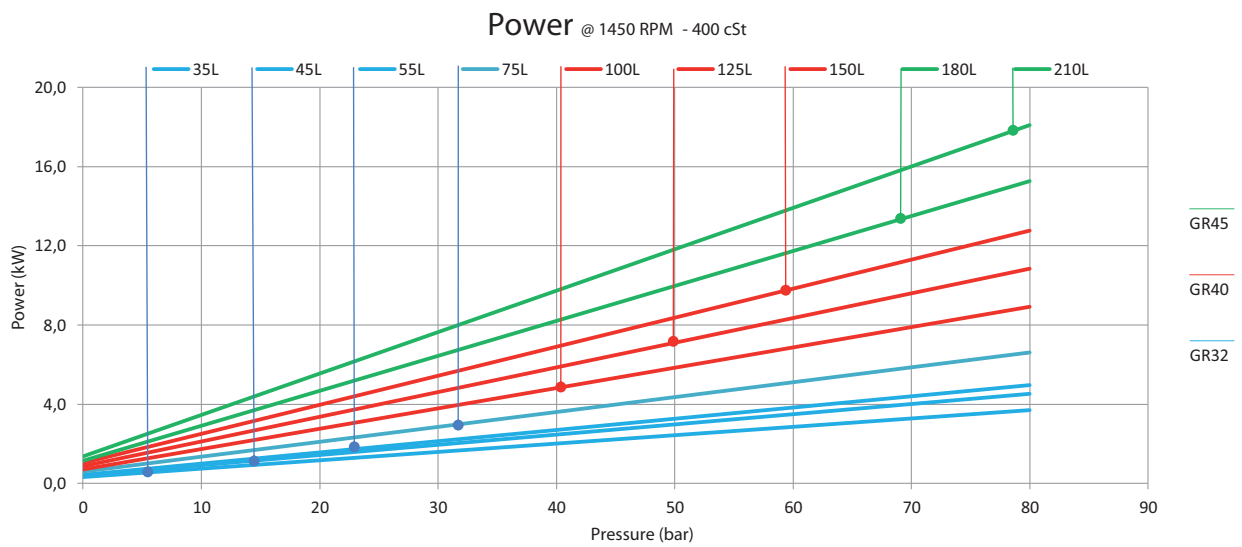
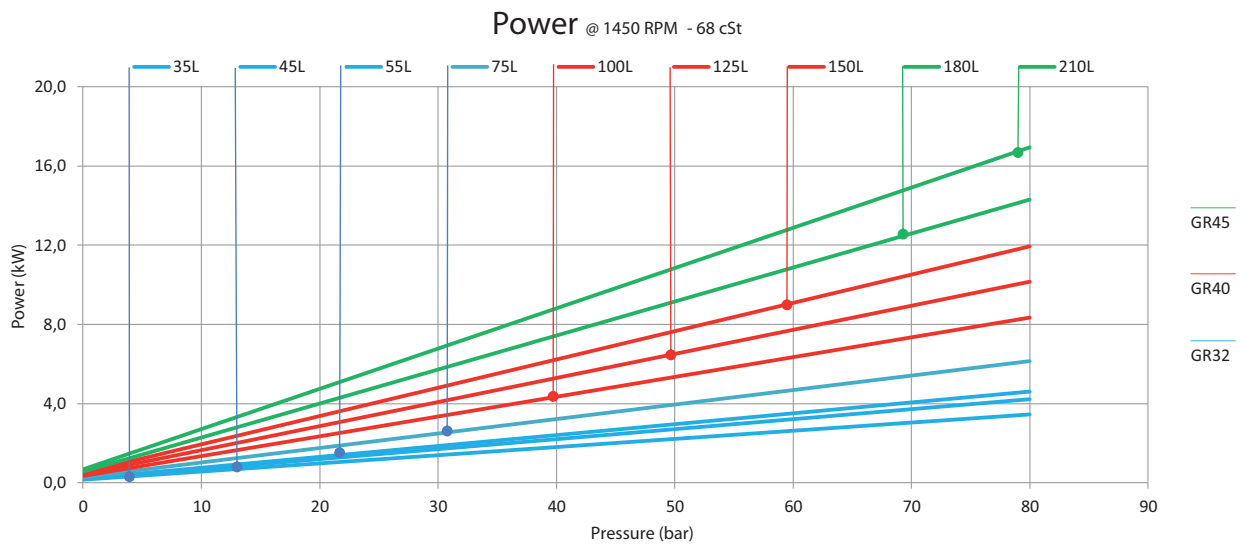
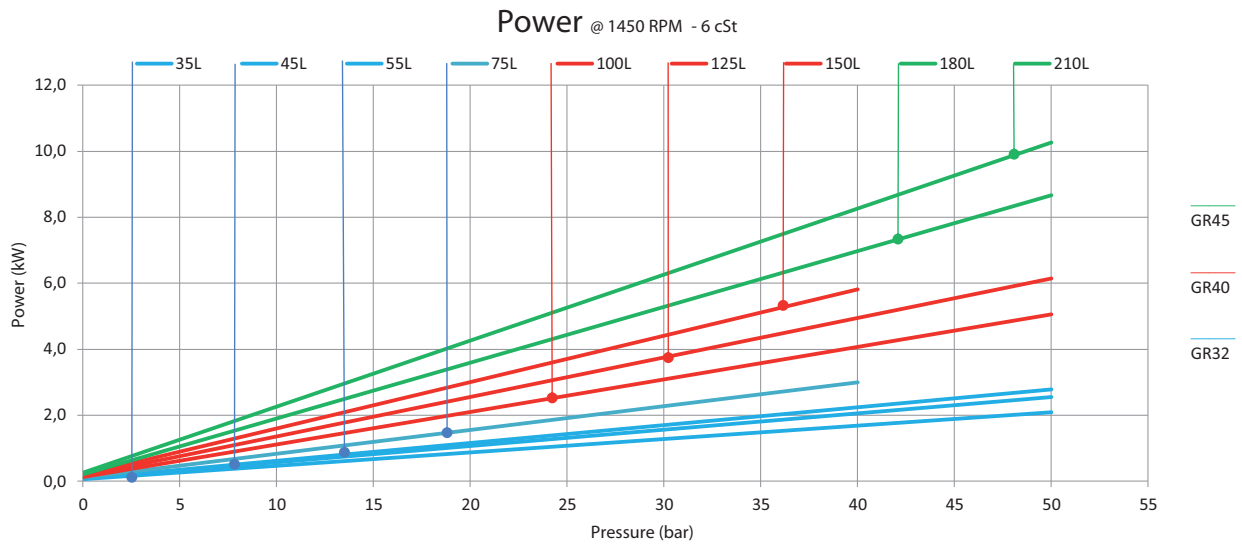
Performances @ 3000 - GR 20-25



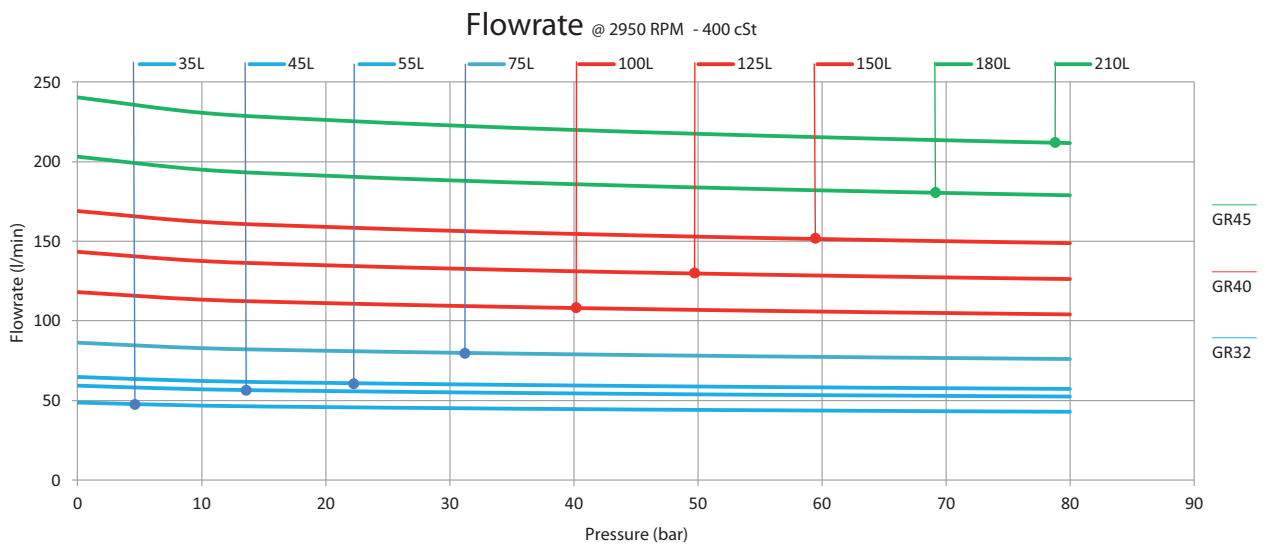
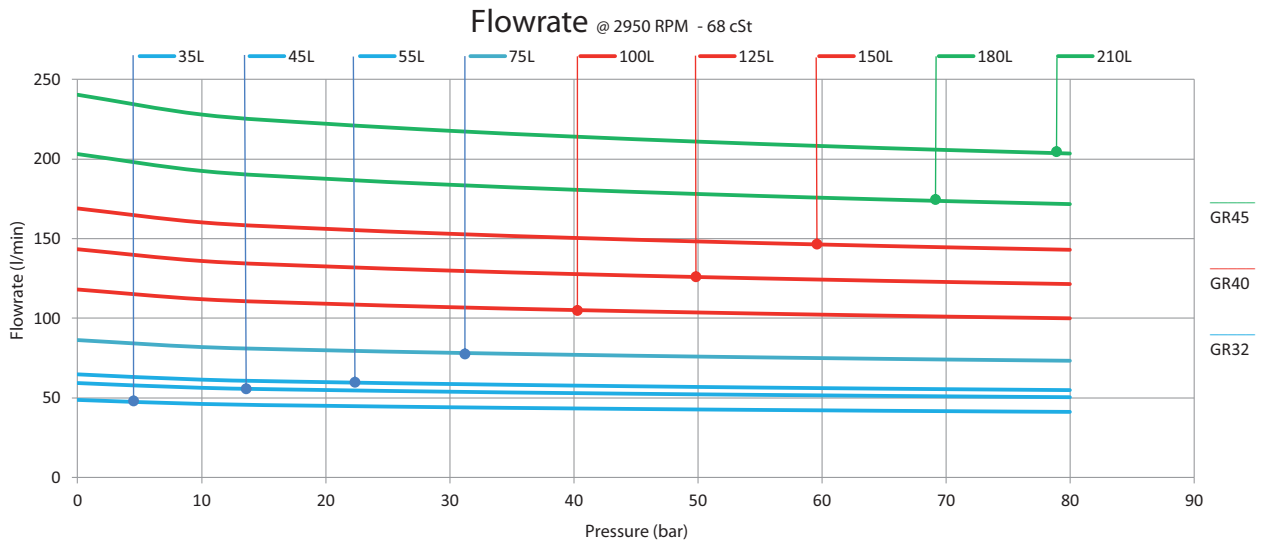
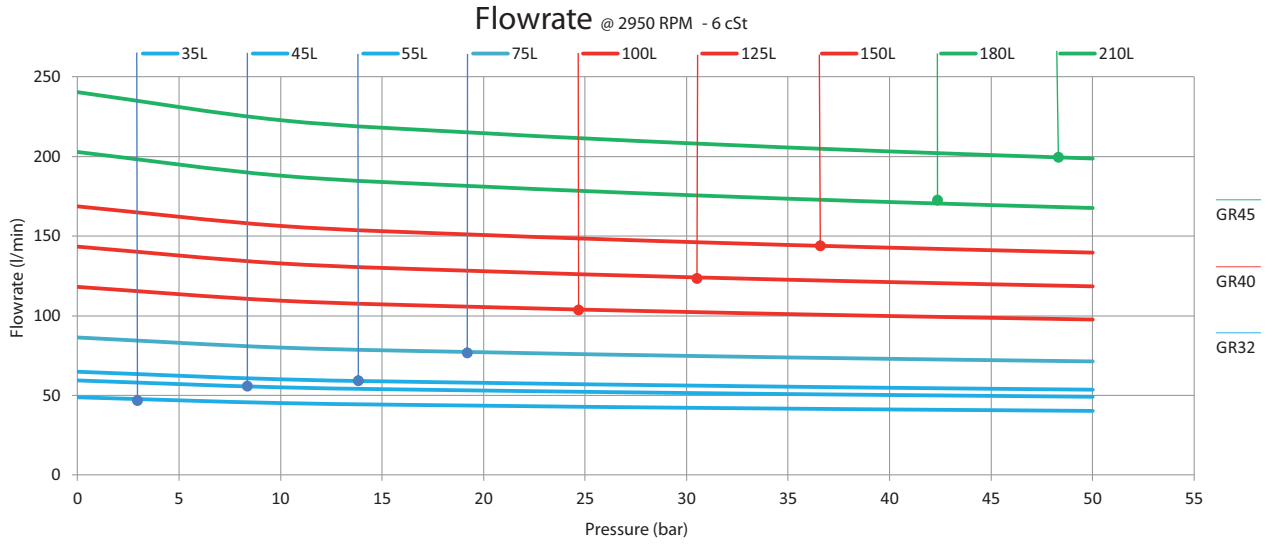


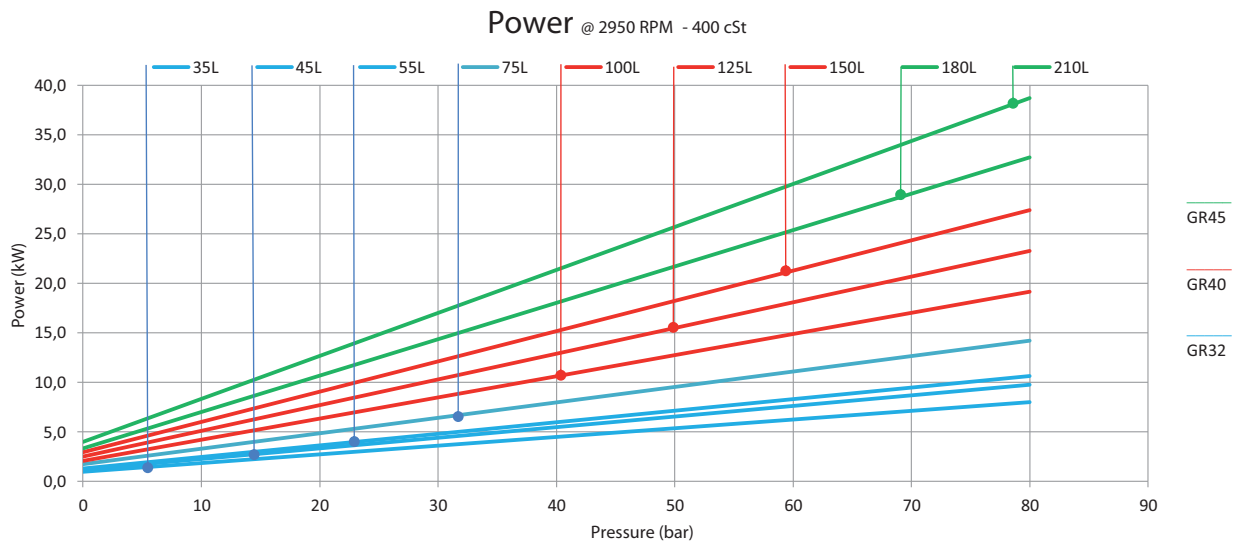
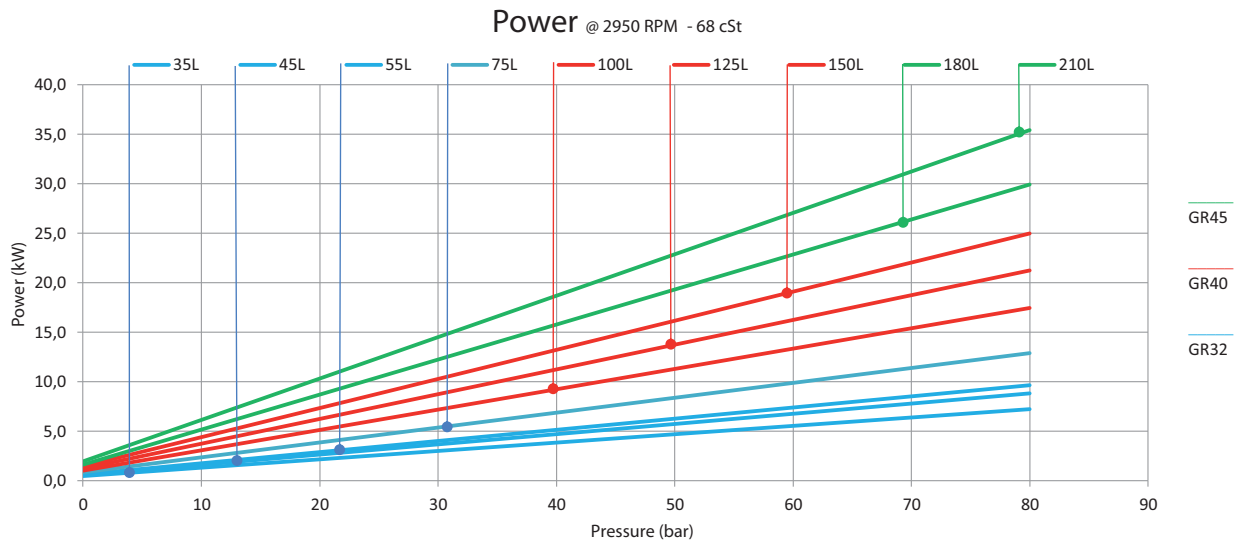
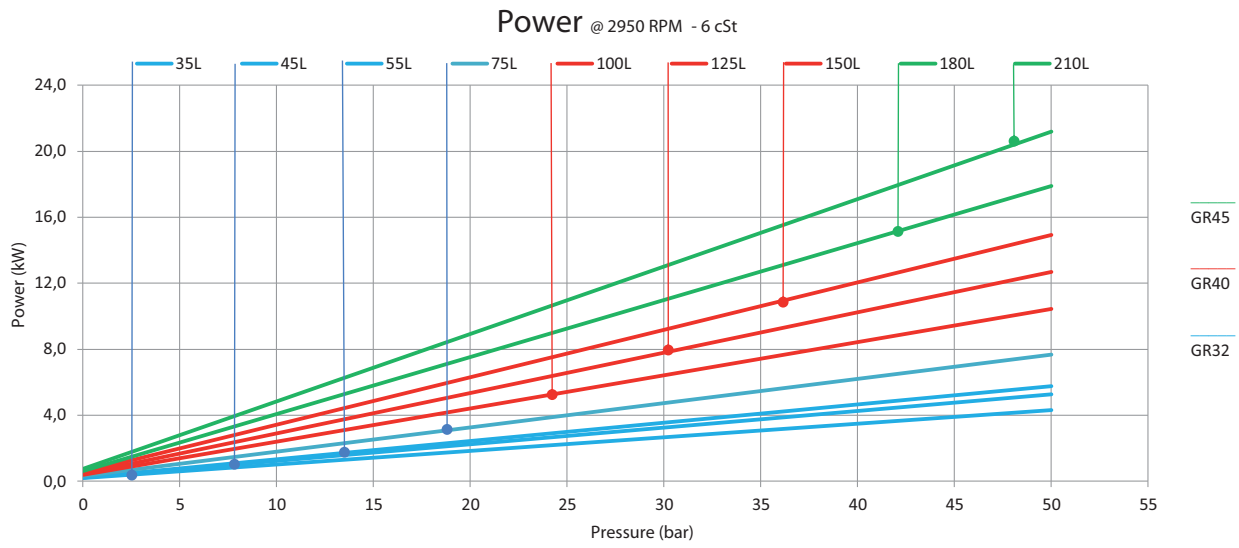
Performances @ 1500 - GR 32-40-45



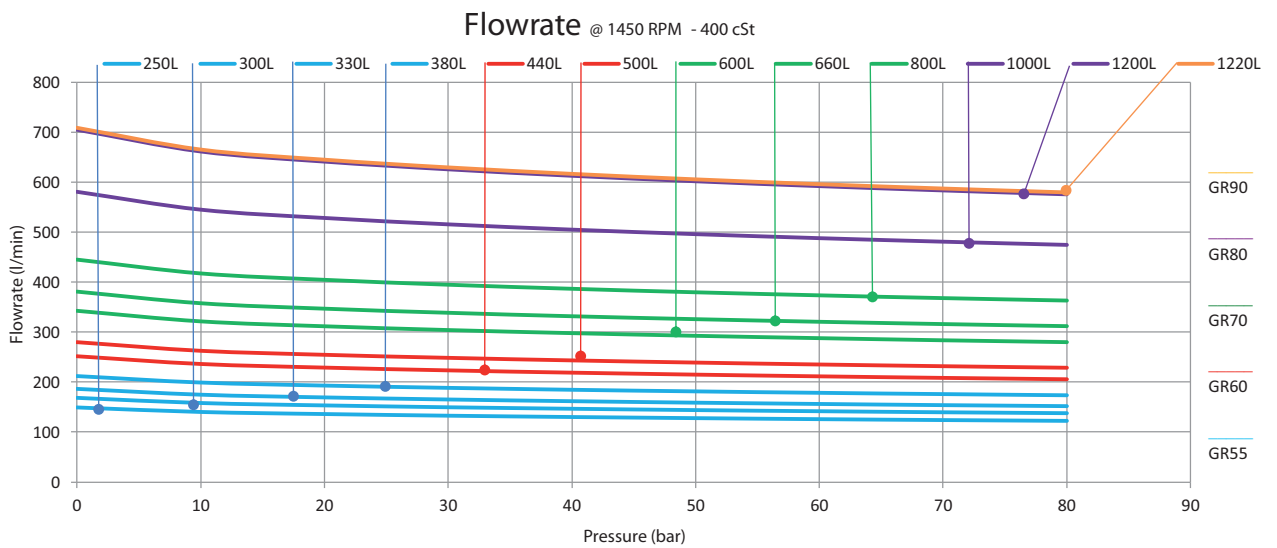
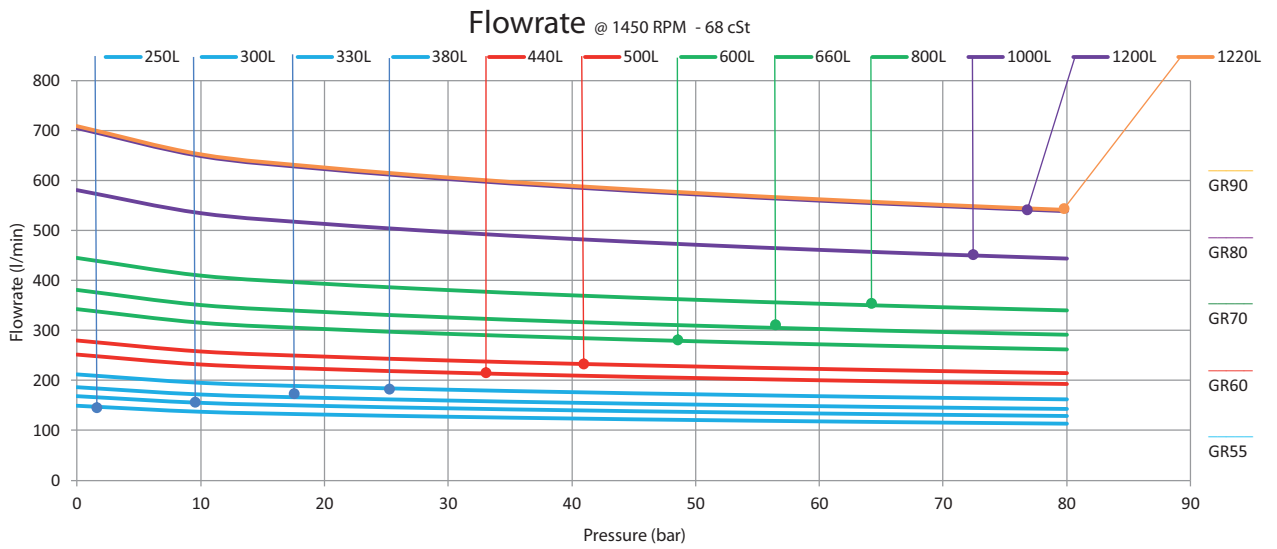
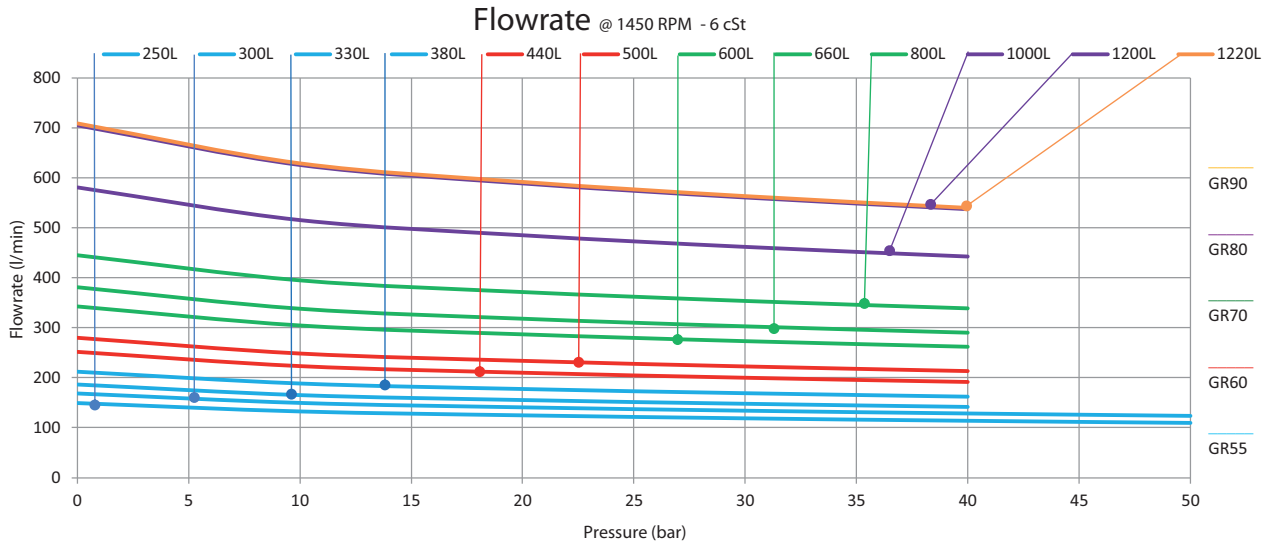


Performances @ 3000 - GR 32-40-45

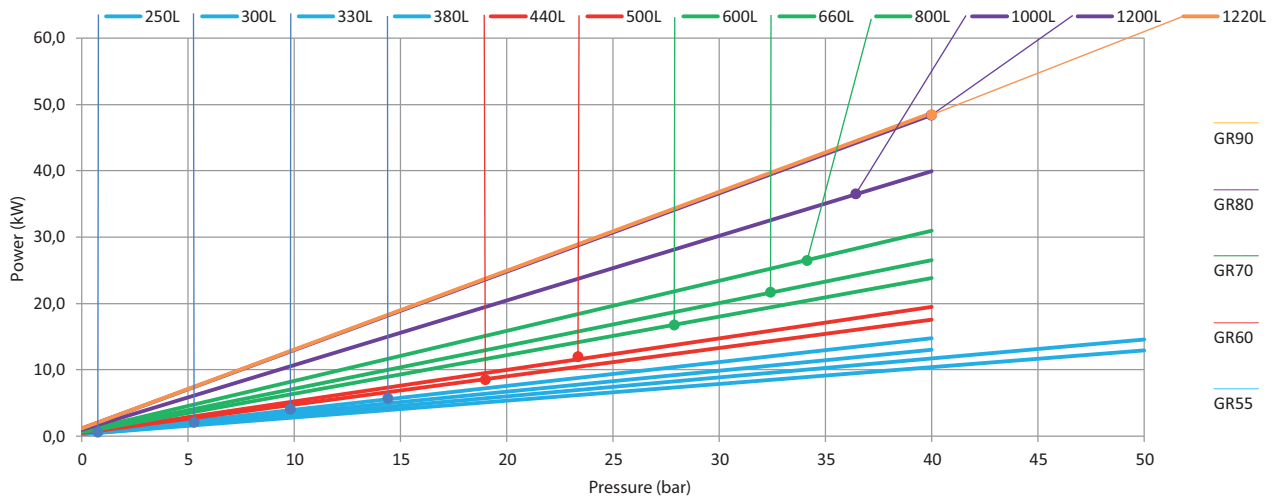




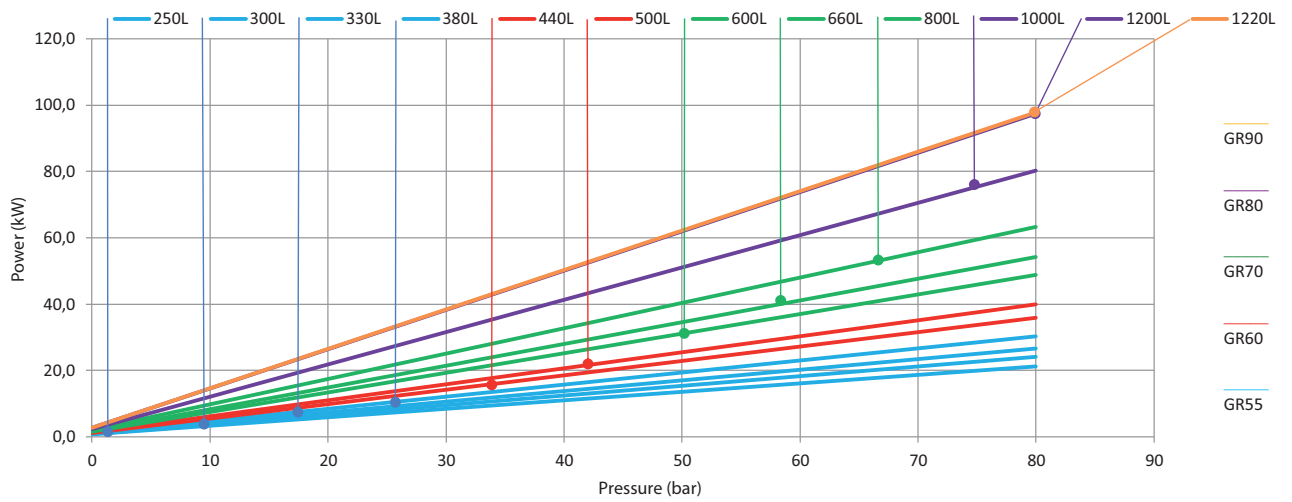
Performances @ 1500 - GR 55-60-70-80-90



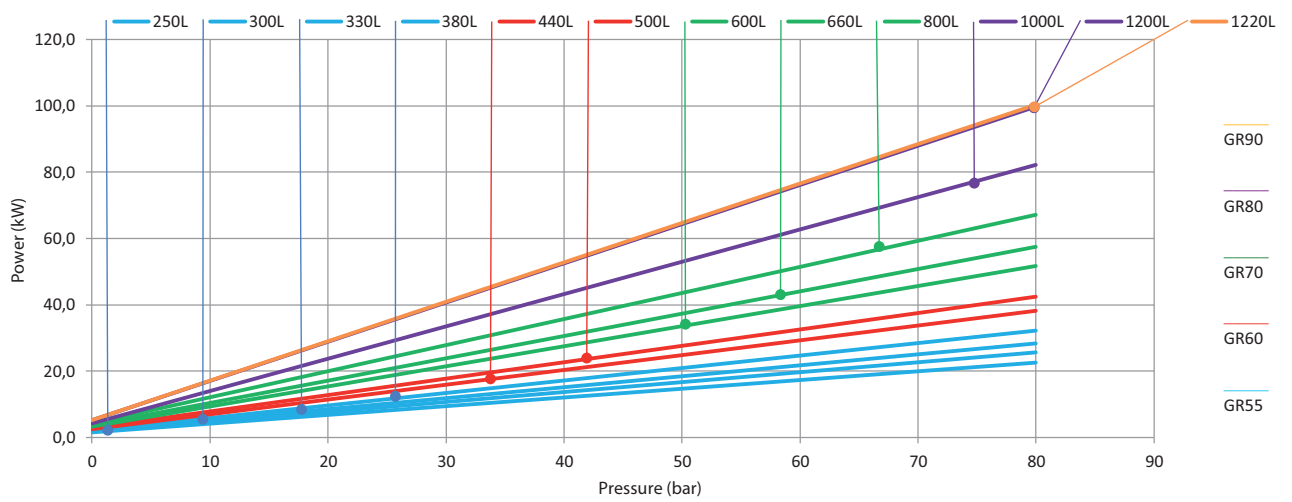
Power @ 1450 RPM - 6 cSt



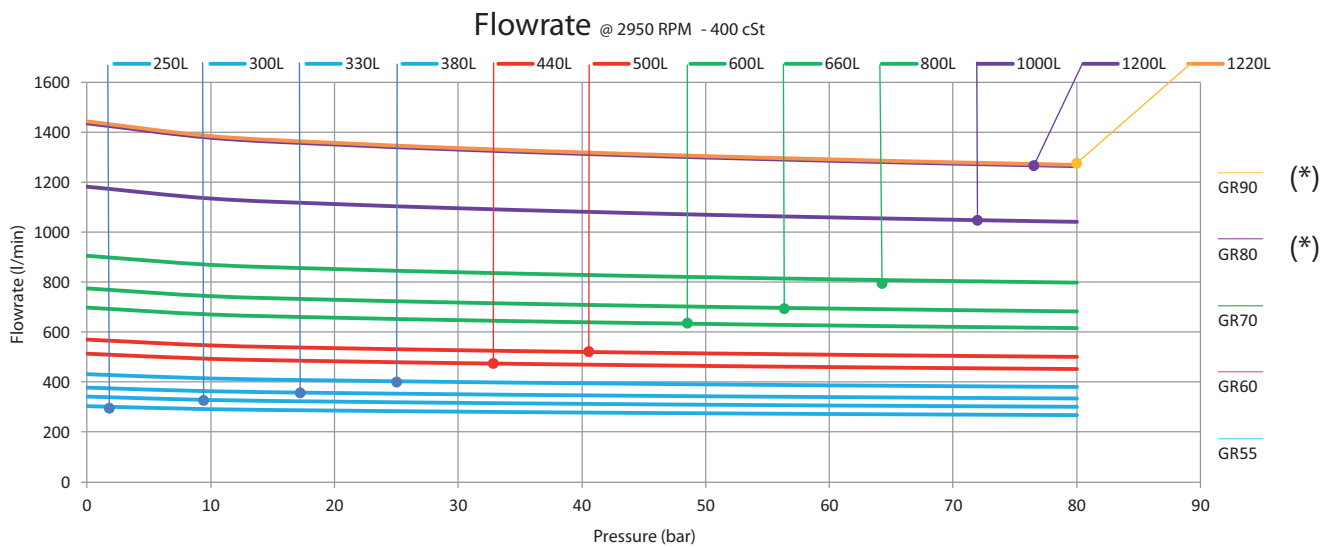
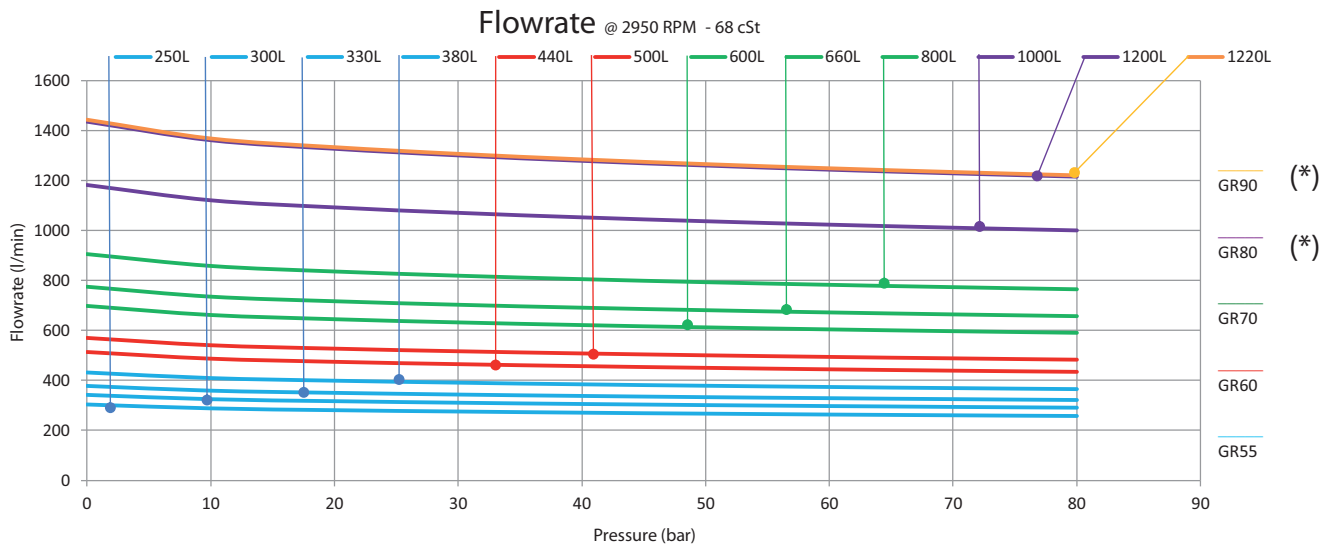
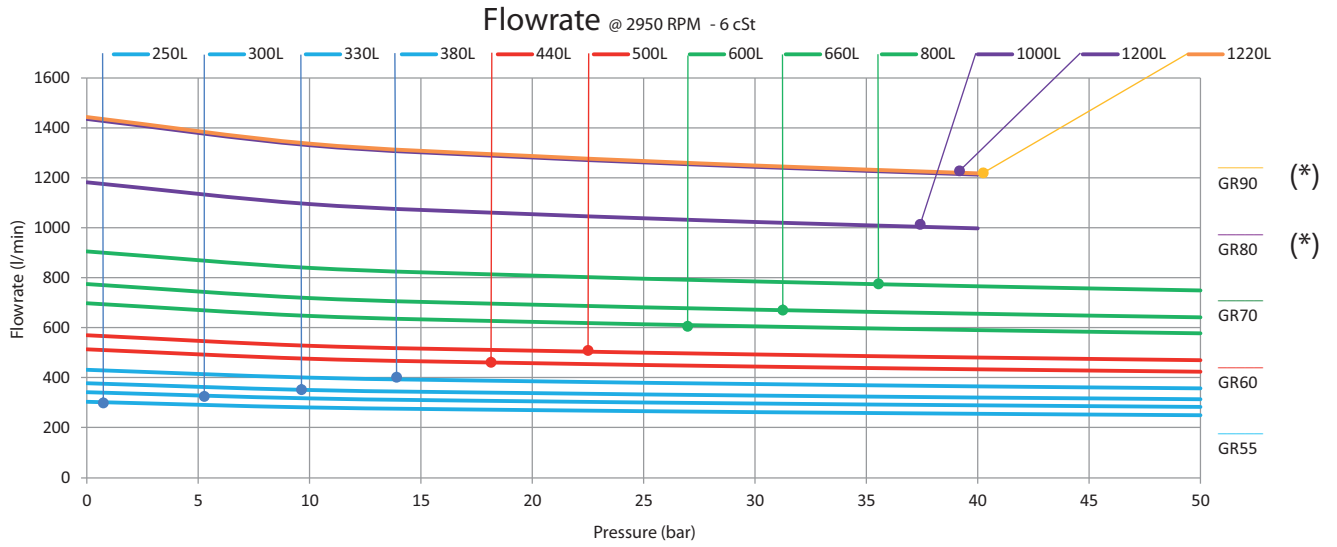
Power @ 1450 RPM - 68 cSt



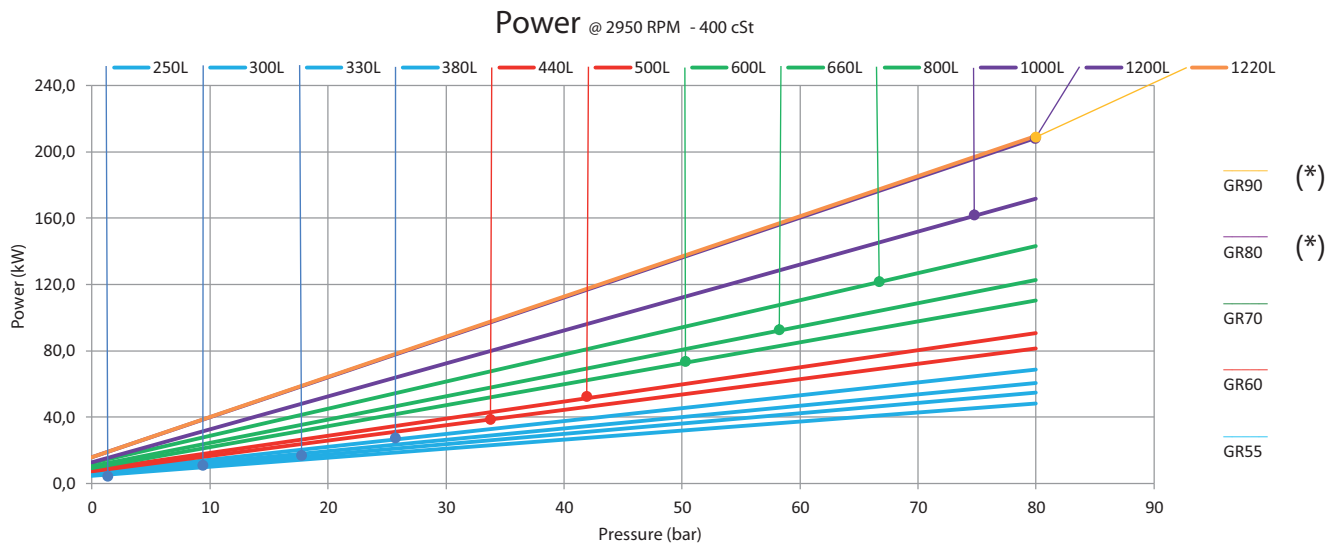
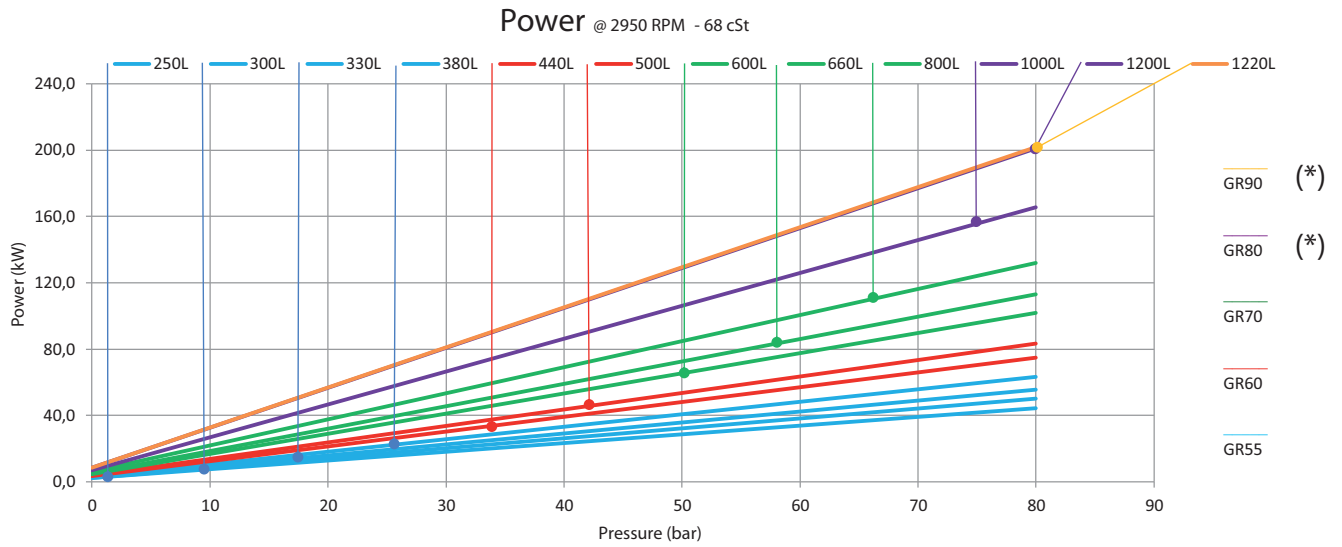
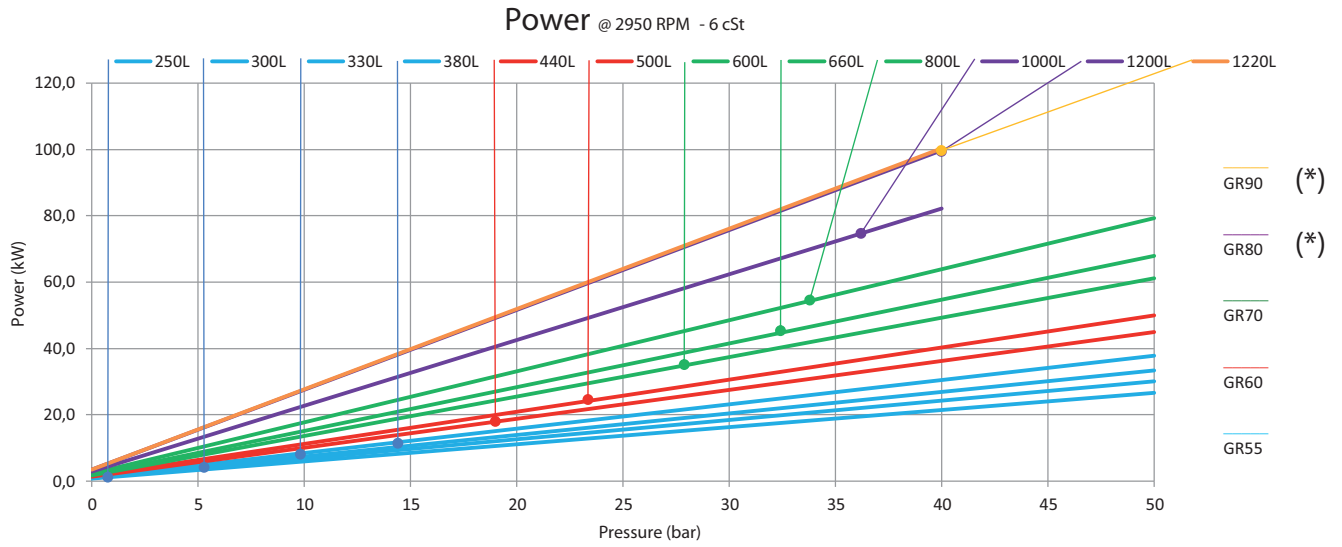
Power @ 1450 RPM - 400 cSt



Performances @ 3000 - GR 55-60-70-80-90



(*) For shaft speed lower than 1.000 rpm and over 1.800 rpm please contact u s . Per velocità inferiori a 1.000 rpm e maggiori di 1.800 rpm contattare la fabbrica.



(*) For shaft speed lower than 1.000 rpm and over 1.800 rpm please contact us. Per velocità inferiori a 1.000 rpm e maggiori di 1.800 rpm contattare la fabbrica.

All data reported by catalogue can change without any notice.

I dati presenti nel catalogo possono cambiare senza preavviso.