

STAINLESS STEEL BIMETAL THERMOMETERS TYPE TBX

Stainless Steel body - Maximum range 500 °C - Dial size 80 ÷ 150 mm - Bottom, Back, Adjustable angle mounting

STAINLESS STEEL BIMETAL THERMOMETERS

Series TBX

Thermometers completely in stainless steel for any kind of industrial applications; they are suitable for chemical, pharmaceutical and food industry and in any hard conditions with corrosive substances. They are formed by a stainless steel tube in which there is a bimetal helical spiral that gets deformed under temperature variations.

TECHNICAL CHARACTERISTICS

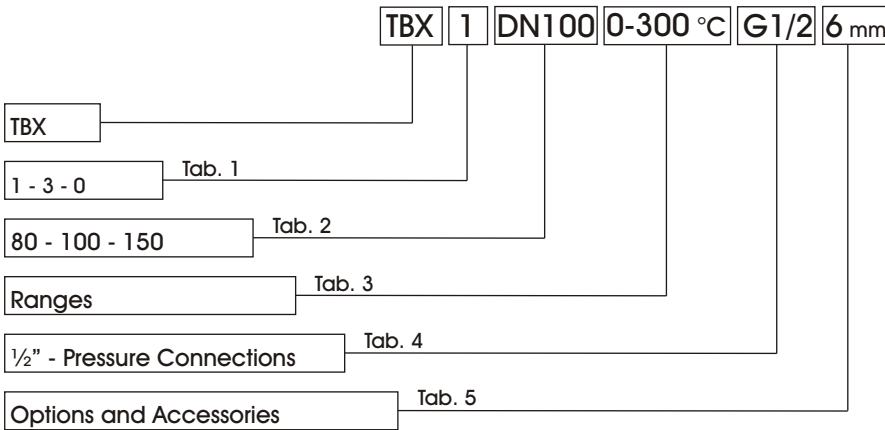
AMBIENT TEMPERATURE:	-30 ÷ 65 °C
OVER TEMPERATURE:	20% F.S.V. up to 160 °C 10% F.S.V. over.
MAX WORKING PRESSURE:	25 bar (without thermowell)
PROTECTION:	IP 55, according to EN 60529

DESIGN FEATURES

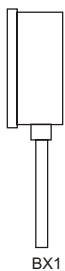
DIAL SIZE (DS):	mm 80 – 100 – 150
ACCURACY:	Class 1 according to EN 13190 in the range of measure
CASE AND RING:	AISI 304 stainless steel with bayonet clutch.
SENSITIVE ELEMENT:	Bimetal spiral.
PROCESS CONNECTION:	G 1/2" A threaded sliding male.
BULB:	Cylindrical in AISI 316 S.S. Ø 8 mm – length upon request.
POINTER:	Black anodized aluminium; zero adjustment.
WINDOW:	Glass 3 mm thick.
WINDOW GASKET:	Nitrile rubber NBR.
DIAL:	White aluminium with black scale and graduation; range of measure indicated from two



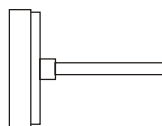
ORDERING CODE



MOUNTING Tab. 1



BX1



TBX3



TBX0

TBX-1 Direct, bottom stem.

TBX-3 Direct, back stem.

TBX-0 Direct, adjustable angle stem.
Only DS 100 and 150.

DIALS Tab. 2

DS 80 - DS 100 - DS 150

STAINLESS STEEL BIMETAL THERMOMETERS TYPE TBX

Stainless Steel body - Maximum range 500 °C - Dial size 80 ÷ 150 mm - Bottom, Back, Adjustable angle mounting

RANGES Tab. 3

Range [°C]	Scale Interval [°C]	Lenght S _{min} [mm]		Range [°C]	Scale interval [°C]	Lenght S _{min} [mm]		Range [°C]	Scale Interval [°C]	Lenght S _{min} [mm]	
		Ø 8	Ø 6			Ø 8	Ø 6			Ø 8	Ø 6
-50 / 50	2	95	110	-20 / 140	2	70	100	0 / 160	2	70	100
-40 / 40	1	100	150	-20 / 180	5	95	150	0 / 200	5	95	150
-40 / 60	2	95	110	-10 / 50	1	150	200	0 / 250	5	95	150
-30 / 50	1	100	150	-10 / 110	2	75	100	0 / 300	5	100	150
-30 / 70	2	95	110	0 / 60	1	150	200	0 / 400	10	150	150
-20 / 40	1	150	200	0 / 80	1	100	150	0 / 500	10	150	150
-20 / 60	1	100	150	0 / 100	2	95	110				
-20 / 80	2	95	110	0 / 120	2	75	100				

PROCESS CONNECTIONS tab. 4

1/2" Gas Male (Other on request, see Options and Accessories Tab. 5)

OPTIONS and ACCESSORIES Tab. 5

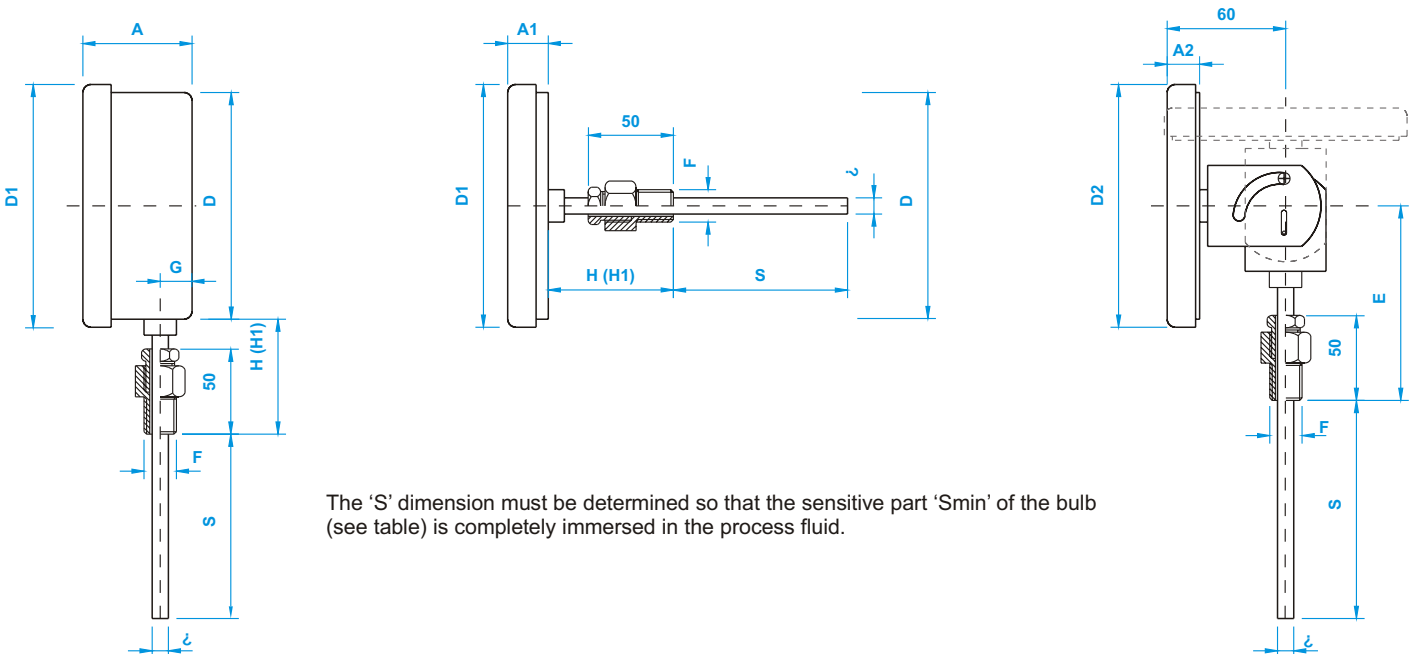
- BULB Ø 6 mm.
- PROCESS CONNECTION:
Turning and sliding male thread 1/2" NPT
Turning and sliding female thread G 1/2" - G 3/4" - 1/2" NPT

• WINDOW IN PLEXIGLASS

• THERMOWELLS

For accessories see the relevant sheets.

DIMENSIONS (mm) and WEIGHTS (Kg)



The 'S' dimension must be determined so that the sensitive part 'S_{min}' of the bulb (see table) is completely immersed in the process fluid.

DS DIAL SIZE	D	D1	D2	A	A1	A2	E	F	G	H	H1	Ø	Weight (kg)		
													TBX1	TBX3	TBX0
80	79	88	-	40	25	-	-	1/2Ø	10	70	100	8	0,25	0,2	-
100	101	114	108	54	25	17	84	1/2Ø	18	70	100	8	0,4	0,25	0,4
150	149	162	165	54	25	21	110	1/2Ø	18	70	100	8	0,5	0,4	0,6

H1 for temperature of full scale more than 250 °C.