

ADJUSTABLE PRESSURE SWITCHES SPDT TYPE PFS243

Max Voltage: 250 Volt
 Current: 6 A Resistive
 Certification: CE
 Contact: SPDT
 Electrical Connection: Faston 6,3x0,8
 Standard Materials: Zinc plated steel body
 HNBR diaphragm/Gasket
 Nylon 6/6 fv.30 Swith housing
 Silver plated contact

Electrical protection: IP00 - The Pressure switch is supplied without Protection Cap
 IP65 with CP65 protection cap

Mechanical life: 10⁶ cycle (Membrane)
 Isteresys: ~25% of set point
 Setting: Internal screw
 Mounting: Hexagon Body Sw24

PFS243



CP65



Rev.08/2018

ORDERING CODE

PFS243 10 BR E S 14 T5D

TYPE	Pressure switches SPDT
ADJUSTABLE RANGE	1 - 2 - 10 - 20 - 50 - 80 - 300
BODY MATERIALS	ZP - BR - SS3 - SS6
MEMBRANE MATERIALS	HN - NB - V - S - E - SS
CONTACT	S (SPDT)
CONNECTIONS	18 - 14 - 18C - 14C M10 - 18N - 14N
SPECIAL EXECUTIONS	T - TD - G - SG - ST** - SW

CODE EXPLANATION

TYPE
 PFS243 Adjustable pressure switch - SPDT contact

RANGE

1	0,1 ÷ 1 bar (max. working pressure 10 bar) - B=55 mm
2	0,5 ÷ 2 bar - B=55 mm
10	1 ÷ 10 bar - B=55 mm
20	10 ÷ 20 bar - B=55 mm
50	20 ÷ 50 bar - B= 55 mm
80	30 ÷ 80 bar - B=55 mm
300	50 ÷ 300 bar - B=58 mm

BODY MATERIAL

ZP Zinc plated steel (standard)
 BR Brass Max press. 80 bar
 SS3 Stainless steel AISI 303
 SS6 Stainless steel AISI 316

DIAPHRAGM/GASKET MATERIALS/TEMPERATURE

HN HNBR -20 ... +120 °C (standard)
 NB NBR -20 ... +90 °C
 V FKM -25 ... +120 °C
 S Silicone -40 ... +140 °C
 E EPDM -20 ... + 120 °C
 SS Inox -30 ... +140 °C (P. Max 80 bar)

CONTACT

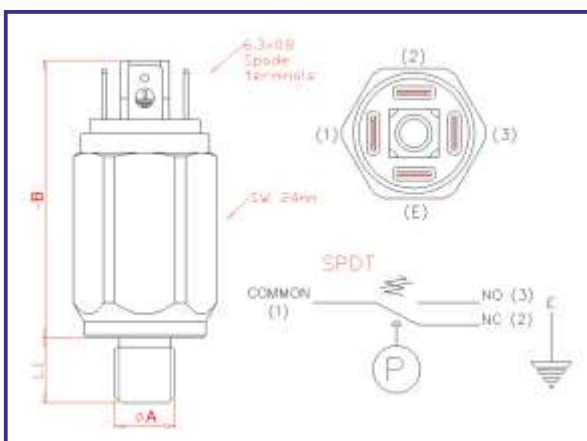
S Changeover SPDT

CONNECTIONS Quote A

18	1/8" GAS Taper	L1=10 mm
14	1/4" GAS Taper	L1=12 mm
18C	1/8" Parallel	L1=10 mm
14C	1/4" Parallel	L1=12 mm
M10	M10x1	L1=10 mm
18N	1/8"-27NPT	L1=10 mm
14N	1/4"-18 NPT	L1=12 mm

SPECIAL EXECUTIONS

T Rising set point @ indicated value
 TD Falling set point @ indicated value
 G Gold plated Contact for low current
 SG Degreased for oxygen
 ST** Special threads (NPT, SAE, Metrico etc...)
 SW Special wiring (Automotive, Integrated/free connector etc...)



TYPE	Adjustable Range (bar rel.)	Maximum static pressure bar	Fixed hysteresis @ 25°C (bar)	Set-point tolerance @ 25°C (bar)	Execution
PFS243					
1	0,1 ÷ 1	350 bar	25% set point	±0,08	Membrane
2	0,2 ÷ 2	350 bar	25% set point	±0,15	Membrane
10	1,5 ÷ 10	350 bar	25% set point	±0,8	Membrane
20	9 ÷ 20	350 bar	25% set point	±1,0	Membrane
50	15 ÷ 50	350 bar	25% set point	±2,0	Membrane
80	40 ÷ 80	350 bar	25% set point	±2,5	Membrane
300	40 ÷ 300	600 bar	25% set point	±15	Piston