

ADJUSTABLE TEMPERATURE SWITCH ATEX-CSA TYPE 100TC

Contact SPDT or DPDT
 Certification Atex, CSA, CENELEC
 Execution Explosion proof, hermetically-sealed electrical assembly, EX d IIC.
 Part Numbers 057-0770 & 057-0772 (Form C) and 057-0771 & 057-0773 (Form CC).
 Agency listings include Underwriters Laboratories, Inc., CSA International, Factory Mutual, and Inmetro. Division 1 and 2, Class I, Groups A, B, C, and D; Class II, Groups E, F, and G.
 NEMA 4X, 7, and 9; IP66. Leads are factory sealed and Pressure Switches are Dual Seal Certified.

Working temperature Ambient -40 +82 °C
 Working pressure 105 bar
 Proof pressure 157 bar
 Electrical connection 1/2 NPT male conduit connection with PVC insulated 18 AWG, 18" long leads
 Process connection 1/2" NPT Male
 Mounting Direct mount with capillary
 Set-Point Concealed wrench flat adjustment with range scale



ORDERING CODE

100TC 5 F C6 RW

TYPE	100TC
WETTED MATERIAL	5
RANGE	B - D - F - H - J - L - N
CONTACT	C6 - CC6
OPTION	A - I - J - M - N - R - W

CODE EXPLANATION

TYPE

100TC Remote mount adjustable temperature switch

WETTED MATERIAL

5 316 stainless steel, graphite filled no asbestos

RANGE

B -45 ÷ 18 °C increase -56 ÷ -17 °C decrease
 D -1 ÷ 80 °C increase -14 ÷ 77 °C decrease
 F 35 ÷ 121 °C increase 21 ÷ 119 °C decrease
 H 80 ÷ 182 °C increase 63 ÷ 179 °C decrease
 J 168 ÷ 260 °C increase 151 ÷ 257 °C decrease
 L 251 ÷ 382 °C increase 229 ÷ 379 °C decrease
 N 340 ÷ 496 °C increase 315 ÷ 492 °C decrease

CONTACT

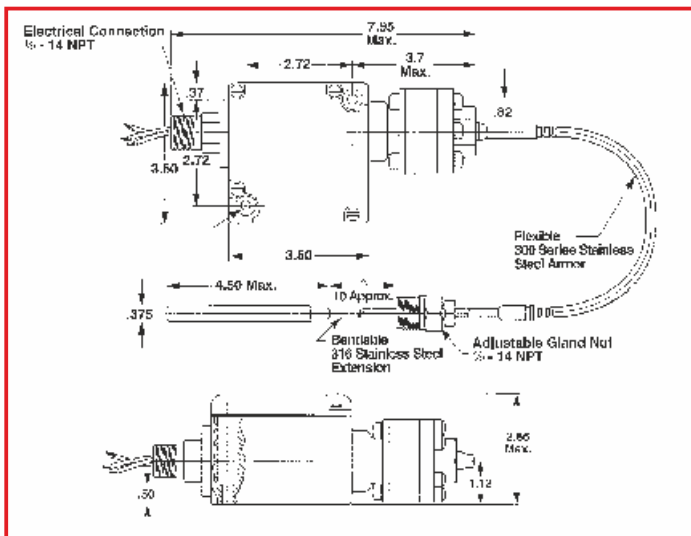
C 11 amp, 1/4 hp at 125 or 250 VAC;
 5 amp resistive, 3 amp inductive at 28 VDC;
 .5 amp resistive at 125 VDC.
 CC 11 amp, 1/4 hp at 125 or 250 VAC;
 5 amp resistive, 3 amp inductive at 28 VDC;
 .5 amp resistive at 125 VDC

OPTION

A Epoxy paint for severe environments
 D SIL approval and marking, per IEC61508
 I 3/4 NPT conduit box with terminal strip (no N option)
 J Annealed stainless steel port screws for H2S
 M Gold electrical contacts for low current
 N ATEX and IECEx with CE Mark
 R 72" Electrical free leads
 W Stainless steel screws — exterior

Optional Capillary Lengths

10', 15', 20' and 25' lengths available
 (insert appropriate number at end of model number)



Set-point	Increasing Range °C	Decreasing Range °C	Deadband °C	Maximum working temperature °C
100TC				
B	-45 ÷ 18	-56 ÷ -17	11/1	121
D	-1 ÷ 80	-14 ÷ 77	13/3	204
F	35 ÷ 121	21 ÷ 119	14/2	232
H	80 ÷ 182	63 ÷ 179	17/3	260
J	168 ÷ 260	151 ÷ 257	17/3	315
L	251 ÷ 382	229 ÷ 379	22/3	482
N	340 ÷ 496	315 ÷ 492	25/4	649