



## Insertion fitting for flow or analytical measurement

- Universal fitting for Insertion measuring device in pure, aggressive or contaminated liquids
- Large range of process connections: DN06 to DN400 in PVC, PP, PVDF, PE, stainless steel, brass
- Transmitter available for:
  - Indication, Monitoring, Transmitting
  - On/Off control, Batch control



Product variants described in the data sheet may differ from the product presentation and description.

### Can be combined with

|   |   |
|---|---|
|   | <b>Type 8020</b> ▶<br>Insertion flowmeter with paddle wheel for continuous flow measurement                                     |
|  | <b>Type 8025</b> ▶<br>Insertion flowmeter or batch controller with paddle wheel and flow transmitter or remote batch controller |
|  | <b>Type 8026</b> ▶<br>Insertion flowmeter with paddle wheel, ELEMENT design   |
|  | <b>Type 8041</b> ▶<br>Insertion magnetic inductive flowmeter  |
|  | <b>Type 8045</b> ▶<br>Insertion magnetic inductive flowmeter  |
|  | <b>Type 8228</b> ▶<br>Inductive conductivity meter  |
|  | <b>Type 8200 / 8203</b> ▶<br>Armatures for analytical probes with probe   |

### Type description

The fitting can be used to connect any Insertion device for a measurement in the pipe. e. g. for flow, pH, oxidation reduction potential (ORP) and conductivity measurement.

The fitting is available for paddle wheel and electromagnetic flowmeters and analytical measurement devices having a G 2" or a clamp connection.

## Table of contents

|   |           |
|---|-----------|
| <b>1. General technical data</b>  | <b>4</b>  |
| <b>2. Approvals</b>   | <b>5</b>  |
| 2.1. FDA-Certificate .....  | 5         |
| 2.2. Pressure Equipment Directive.....  | 5         |
| Device used on a pipe .....   | 5         |
| <b>3. Materials</b>   | <b>5</b>  |
| 3.1. Chemical Resistance Chart – Bürkert resistApp.....   | 5         |
| <b>4. Dimensions</b>  | <b>6</b>  |
| 4.1. Metal T-fitting for measuring device with G 2" connection .....  | 6         |
| Internal thread process connection .....  | 6         |
| External thread process connection .....  | 6         |
| Weld end process connection .....   | 7         |
| Clamp process connection.....   | 8         |
| Flange process connection.....  | 8         |
| 4.2. Plastic T-fitting for measuring device with G 2" connection.....   | 9         |
| True union connection with nut and solvent/fusion socket .....  | 9         |
| External thread process connection .....  | 9         |
| Solvent/fusion spigot process connection .....  | 10        |
| 4.3. Welding spigot/socket process connection for measuring device with G 2" connection .....                 | 10        |
| Welding socket process connection, with radius .....  | 10        |
| Fusion spigot process connection .....  | 11        |
| Screw-on spigot process connection.....   | 12        |
| 4.4. Saddle for flowmeter with G 2" connection.....   | 12        |
| 4.5. Measuring chamber for analytical measuring device .....  | 12        |
| 4.6. T-fitting for flowmeter with clamp connection .....  | 13        |
| Weld end process connection .....   | 13        |
| 4.7. Welding socket process connection for flowmeter with clamp connection .....                              | 13        |
| Welding socket process connection.....  | 13        |
| <b>5. Performance specifications</b>  | <b>14</b> |
| 5.1. Pressure temperature diagram.....  | 14        |
| <b>6. Product installation</b>  | <b>14</b> |
| 6.1. Installation notes.....  | 14        |
| Flow measurement: .....   | 14        |
| Analytical measurement.....   | 15        |
| 6.2. Selection of the nominal diameter .....  | 15        |
| <b>7. Networking and combination with other Bürkert products</b>  | <b>17</b> |
| 7.1. Fitting for measuring device with G 2" connection.....   | 17        |
| 7.2. Fitting for for flowmeter with clamp connection .....  | 18        |
| 7.3. Combination of the S020 with a measuring device for flow rate, pH or ORP, conductivity measurement ..... | 19        |
| <b>8. Ordering information</b>  | <b>19</b> |
| 8.1. Bürkert eShop – Easy ordering and quick delivery.....  | 19        |
| 8.2. Bürkert product filter.....  | 19        |
| 8.3. Ordering chart.....  | 20        |
| Metal T-fitting DN06...DN65 for measuring device with G 2" connection.....                                    | 20        |

|  |    |
|--|----|
| Plastic T-fitting DN06...DN65 for measuring device with G 2" connection.....               | 21 |
| Welding spigot/socket process connection for measuring device with G 2" connection.....    | 21 |
| Welding spigot/socket process connection .....   | 21 |
| Saddle for flowmeter with G 2" connection.....   | 22 |
| Measuring chamber for analytical measuring device .....                                    | 22 |
| T-fitting DN32...DN100 for flowmeter Type 8041/8045 with clamp connection.....             | 22 |
| Welding socket process connection for flowmeter Type 8041/8045 with clamp connection ..... | 22 |
| 8.4. Ordering chart accessories.....   | 23 |
| Accessories for all versions .....   | 23 |
| Accessories for fitting for measuring device with G 2" connection.....                     | 23 |
| Accessories for fitting for flowmeter Type 8041/8045 with clamp connection.....            | 23 |


## 1. General technical data

| Product properties   |  |
|--|--|
| <b>Materials</b>   |  |
| Please make sure the device materials are compatible with the fluid you are using.<br>Detailed information can be found in chapter <a href="#">“3.1. Chemical Resistance Chart – Bürkert resistApp”</a> on page 5. |  |
| <b>Wetted parts</b>  |  |
| For G 2" flowmeter connection  | Body & adapter respectively in brass (CuZn <sub>39</sub> Pb <sub>2</sub> ) & stainless steel (316L - 1.4404) or all in stainless steel (316L - 1.4404), PVC, PP, PVDF or PE (depending on S020 version)<br>Seal in FKM or EPDM (depending on S020 version)   |
| For clamp flowmeter connection   | Stainless steel 316L   |
| Dimensions   | Detailed information can be found in chapter <a href="#">“4. Dimensions”</a> on page 6.  |
| Compatibility  | With flowmeters Type 8020, 8025, 8026, 8041, 8045 or analytical measuring devices<br>Type 8200/8203, 8220 or 8228  |
| <b>Pipe diameter</b>   |  |
| For G 2" flowmeter connection  | DN06...DN400<br>Combination between fitting and measuring device is sometimes restricted to some DN.<br>Detailed information can be found in chapter <a href="#">“7.3. Combination of the S020 with a measuring device for flow rate, pH or ORP, conductivity measurement”</a> on page 19.   |
| For clamp flowmeter connection   | DN32...DN100   |
| <b>Surface finish</b>  |  |
| For clamp flowmeter connection   | Ra < 0.8 µm (excluding welding seams)  |
| <b>Medium data</b>   |  |
| Fluid temperature <sup>1.)</sup>   | For fitting in:<br>PVC: 0...+50 °C (+32...+122 °F)<br>PP: 0...+80 °C (+32...+176 °F)<br>PVDF: -15...+100 °C (+5...+212 °F)<br>PE: +5...+70 °C (+41...+158 °F)<br>Stainless steel, brass: -15...+160 °C (+5...+320 °F)  |
| Fluid pressure (max.) <sup>1.)</sup>   | PN10 for plastic sensor-fitting<br>PN16 for metal sensor-fitting<br>Detailed information can be found in chapter <a href="#">“5.1. Pressure temperature diagram”</a> on page 14.   |
| <b>Approvals and certificates</b>  |  |
| <b>Directives</b>  |  |
| CE directives  | The applied standards, which verify conformity with the EU Directives, can be found on the EU Type Examination Certificate and/or the EU Declaration of conformity (if applicable)   |
| Pressure equipment directives  | Complying with Article 4, Paragraph 1 of 2014/68/EU directive.<br>Detailed information on the pressure equipment directive can be found in chapter <a href="#">“2.2. Pressure Equipment Directive”</a> on page 5.  |
| Certificates   | Certificates must be ordered separately. Detailed information can be found in chapter <a href="#">“Accessories for all versions”</a> on page 23. <ul style="list-style-type: none"> <li>• Inspection certificate 3.1 (acc. to EN-ISO 10204)</li> <li>• Test report 2.2 (acc. to EN-ISO 10204)</li> <li>• Certification of Conformity for the surface Quality (DIN4762-DIN4768-ISO/4287/1)</li> <li>• 3 points Flow calibration certificate</li> <li>• FDA declaration of conformity (stainless steel fitting only with EPDM seal)</li> </ul> |
| <b>Product connections</b>   |  |
| Measuring device connection  | G 2" or clamp connection   |
| Process connection   | Metal fitting: internal or external thread, weld ends, clamp or flange<br>Plastic fitting: true union with nut and solvent/fusion socket, spigot or external thread, saddle  |
| <b>Environment and installation</b>  |  |
| Ambient temperature  | Operation and storage:<br>Temperature limits may depend on the inserted device. Refer to the relevant data sheet or instruction manual for more details.   |

1.) Temperature and pressure limits may depend on the inserted device. Refer to the relevant data sheet or instruction manual. If the temperature or pressure ranges given for the adapter and the inserted device are different, use the most restrictive range.

## 2. Approvals

### 2.1. FDA-Certificate

| Certificates  | Description  |
|---|--|
|  | <b>FDA</b><br>The versions with the housing made of stainless steel materials and the seal made of EPDM materials comply in their composition with the Code of Federal Regulations published by the FDA (Food and Drug Administration, USA). |

### 2.2. Pressure Equipment Directive

The device conforms to Article 4, Paragraph 1 of the Pressure Equipment Directive 2014/68/EU under the following conditions:

#### Device used on a pipe

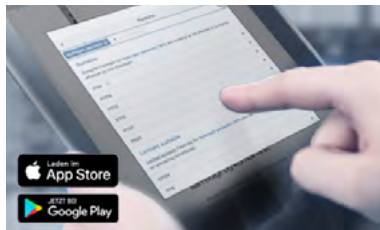
##### Note:

- The data in the table is independent of the chemical compatibility of the material and the fluid.
- PS = maximum admissible pressure, DN = nominal diameter of the pipe

| Type of fluid                              | Conditions   |
|--|--|
| Fluid group 1, Article 4, Paragraph 1.c.i  | $DN \leq 25$   |
| Fluid group 2, Article 4, Paragraph 1.c.i  | $DN \leq 32$ or $PS \cdot DN \leq 1000$                  |
| Fluid group 1, Article 4, Paragraph 1.c.ii | $DN \leq 25$ or $PS \cdot DN \leq 2000$                  |
| Fluid group 2, Article 4, Paragraph 1.c.ii | $DN \leq 200$ or $PS \leq 10$ or $PS \cdot DN \leq 5000$ |

## 3. Materials

### 3.1. Chemical Resistance Chart – Bürkert resistApp



#### Bürkert resistApp – Chemical Resistance Chart

You want to ensure the reliability and durability of the materials in your individual application case? Verify your combination of media and materials on our website or in our resistApp.

[Start Chemical Resistance Check](#)

## 4. Dimensions

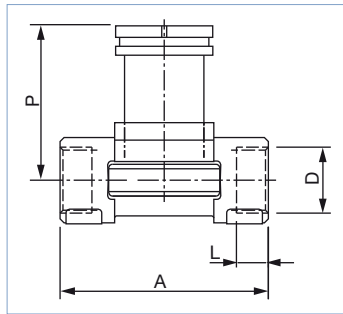
### 4.1. Metal T-fitting for measuring device with G 2" connection

#### Internal thread process connection

##### Note:

- Specifications in mm (except if explicitly mentioned)
- For use with a flowmeter with short sensor
- Suitable from DN32 for use with an analytical measuring device

According to G, NPT or Rc in stainless steel (316L - 1.4404) and/or brass (CuZn<sub>39</sub>Pb<sub>2</sub>)



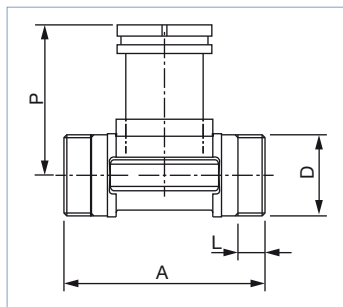
| DN | P    | A     | D       |  | L    |
|----|------|-------|---------|--|------|
|    |      |       | [inch]  |  |      |
| 15 | 80.3 | 84.0  | G ½     |  | 16.0 |
|    |      |       | NPT ½   |  | 17.0 |
|    |      |       | Rc ½    |  | 15.0 |
| 20 | 77.8 | 94.0  | G ¾     |  | 17.0 |
|    |      |       | NPT ¾   |  | 18.3 |
|    |      |       | Rc ¾    |  | 16.3 |
| 25 | 78.0 | 104.0 | G 1     |  | 23.5 |
|    |      |       | NPT 1   |  | 18.0 |
|    |      |       | Rc 1    |  | 18.0 |
| 32 | 81.6 | 119.0 | G 1 ¼   |  | 23.5 |
|    |      |       | NPT 1 ¼ |  | 21.0 |
|    |      |       | Rc 1 ¼  |  | 21.0 |
| 40 | 85.4 | 129.0 | G 1 ½   |  | 23.5 |
|    |      |       | NPT 1 ½ |  | 20.0 |
|    |      |       | Rc 1 ½  |  | 19.0 |
| 50 | 91.5 | 148.5 | G 2     |  | 27.5 |
|    |      |       | NPT 2   |  | 24.0 |
|    |      |       | Rc 2    |  | 24.0 |

#### External thread process connection

##### Note:

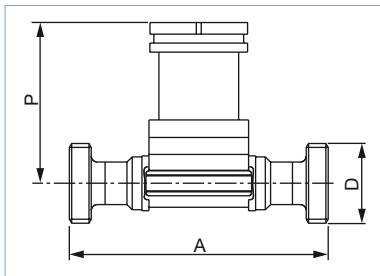
- Specifications in mm (except if explicitly mentioned)
- For use with a flowmeter with short sensor
- Suitable from DN32 for use with an analytical measuring device

According to G in stainless steel (316L - 1.4404) and/or brass (CuZn<sub>39</sub>Pb<sub>2</sub>) or PVC (only DN06 and DN08)



| DN | P    | A     | D      |         | L    |
|----|------|-------|--------|---------|------|
|    |      |       | [Inch] | [mm]    |      |
| 06 | 75.3 | 90.0  | G ½    | –       | 14.0 |
| 08 | 75.3 | 90.0  | G ½    | –       | 14.0 |
| 15 | 80.3 | 84.0  | G ¾    | –       | 11.5 |
| 20 | 77.8 | 94.0  | G 1    | –       | 13.5 |
| 25 | 78.0 | 104.0 | G 1 ¼  | –       | 14.0 |
| 32 | 81.6 | 119.0 | G 1 ½  | –       | 18.0 |
| 40 | 85.4 | 129.0 | –      | M55 x 2 | 19.0 |
| 50 | 91.5 | 148.5 | –      | M64 x 2 | 20.0 |

According to SMS 1145 in stainless steel (316L - 1.4404)



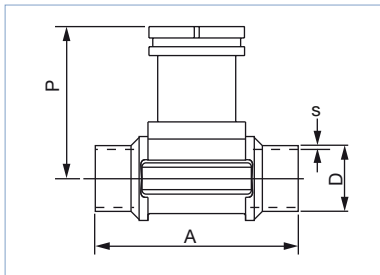
| DN | P    | A   | D            |
|----|------|-----|--------------|
| 25 | 77.8 | 130 | Rd 40 x 1/6" |
| 40 | 81.6 | 164 | Rd 60 x 1/6" |
| 50 | 85.4 | 173 | Rd 70 x 1/6" |

**Weld end process connection**

**Note:**

- Specifications in mm
- For use with a flowmeter with short sensor
- Suitable from DN32 for use with an analytical measuring device

According to EN ISO 1127/ISO 4200/DIN 11866 series B, SMS 3008 or BS 4825-1/ASME BPE/DIN 11866 series C in stainless steel (316L - 1.4404)



| DN | P    | A     | Standard                                | D     | s    |
|----|------|-------|---|-------|------|
| 15 | 80.3 | 84.0  | EN ISO 1127/ISO 4200/DIN 11866 Series B | 21.30 | 1.60 |
|    | -    | -     | SMS 3008                                | -     | -    |
|    | -    | -     | ASME BPE/DIN 11866 Series C             | -     | -    |
| 20 | 77.8 | 94.0  | EN ISO 1127/ISO 4200/DIN 11866 Series B | 26.9  | 1.60 |
|    | -    | -     | SMS 3008                                | -     | -    |
|    | 83.3 | 84.0  | ASME BPE/DIN 11866 Series C             | 19.05 | 1.65 |
| 25 | 78.0 | 104.0 | EN ISO 1127/ISO 4200/DIN 11866 Series B | 33.70 | 2.00 |
|    | 77.8 | 94.0  | SMS 3008                                | 25.00 | 1.20 |
|    | 77.8 | 94.0  | BS 4825-1/ASME BPE/DIN 11866 Series C   | 25.40 | 1.65 |
| 32 | 81.6 | 119.0 | EN ISO 1127/ISO 4200/DIN 11866 Series B | 42.40 | 2.00 |
|    | -    | -     | SMS 3008                                | -     | -    |
|    | 78.0 | 104.0 | BS 4825-1/ASME BPE/DIN 11866 Series C   | 32.00 | 1.65 |
| 40 | 85.4 | 129.0 | EN ISO 1127/ISO 4200/DIN 11866 Series B | 48.30 | 2.00 |
|    | 81.6 | 119.0 | SMS 3008                                | 38.00 | 1.20 |
|    | 81.6 | 119.0 | BS 4825-1/ASME BPE/DIN 11866 Series C   | 38.10 | 1.65 |
| 50 | 91.5 | 148.5 | EN ISO 1127/ISO 4200/DIN 11866 Series B | 60.30 | 2.60 |
|    | 85.4 | 128.0 | SMS 3008                                | 51.00 | 1.20 |
|    | 85.4 | 128.0 | BS 4825-1/ASME BPE/DIN 11866 Series C   | 50.80 | 1.65 |
| 65 | -    | -     | EN ISO 1127/ISO 4200/DIN 11866 Series B | -     | -    |
|    | 91.5 | 147.0 | SMS 3008                                | 63.50 | 1.60 |
|    | 91.5 | 147.0 | BS 4825-1/ASME BPE/DIN 11866 Series C   | 63.50 | 1.65 |

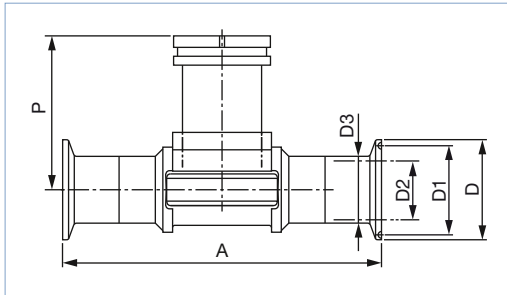
DTS 1000011768 EN Version: AG Status: RL (released | freigegeben | valide) printed: 21.08.2019

**Clamp process connection**

**Note:**

- Specifications in mm
- For use with a flowmeter with short sensor
- Suitable from DN32 for use with an analytical measuring device

According to DIN 32676 series B, SMS 3017<sup>1)</sup> or BS 4825-3/ASME BPE<sup>1)</sup> in stainless steel (316L - 1.4404)



| DN | P    | A   | Standard                         | D    | D1   | D2    | D3    |
|----|------|-----|----------------------------------|------|------|-------|-------|
| 15 | 80.3 | 130 | DIN 32676 Series B <sup>2)</sup> | 34.0 | 27.5 | 18.10 | 21.30 |
|    | -    | -   | SMS 3017                         | -    | -    | -     | -     |
|    | -    | -   | ASME BPE                         | -    | -    | -     | -     |
| 20 | 77.8 | 150 | DIN 32676 Series B               | 50.5 | 43.5 | 23.70 | 26.90 |
|    | -    | -   | SMS 3017                         | -    | -    | -     | -     |
|    | 80.3 | 119 | ASME BPE                         | 25.0 | 19.6 | 15.75 | 19.05 |
| 25 | 78.0 | 160 | DIN 32676 Series B               | 50.5 | 43.5 | 29.70 | 33.70 |
|    | 77.8 | 129 | SMS 3017                         | 50.5 | 43.5 | 22.60 | 25.00 |
|    | 77.8 | 129 | BS 4825-3/ASME BPE               | 50.5 | 43.5 | 22.10 | 25.40 |
| 32 | 81.6 | 180 | DIN 32676 Series B               | 50.5 | 43.5 | 38.40 | 42.40 |
|    | -    | -   | SMS 3017                         | -    | -    | -     | -     |
|    | -    | -   | BS 4825-3/ASME BPE               | -    | -    | -     | -     |
| 40 | 85.4 | 200 | DIN 32676 Series B               | 64.0 | 56.5 | 44.30 | 48.30 |
|    | 81.6 | 161 | SMS 3017                         | 50.5 | 43.5 | 35.60 | 38.00 |
|    | 81.6 | 161 | BS 4825-3/ASME BPE               | 50.5 | 43.5 | 34.80 | 38.10 |
| 50 | 91.5 | 230 | DIN 32676 Series B               | 77.5 | 70.5 | 55.10 | 60.30 |
|    | 85.4 | 192 | SMS 3017                         | 64.0 | 56.5 | 48.60 | 51.00 |
|    | 85.4 | 192 | BS 4825-3/ASME BPE               | 64.0 | 56.5 | 47.50 | 50.80 |
| 65 | -    | -   | DIN 32676 Series B               | -    | -    | -     | -     |
|    | 91.5 | 216 | SMS 3017                         | 77.5 | 70.5 | 60.30 | 63.50 |
|    | 91.5 | 216 | BS 4825-3/ASME BPE               | 77.5 | 70.5 | 60.20 | 63.50 |

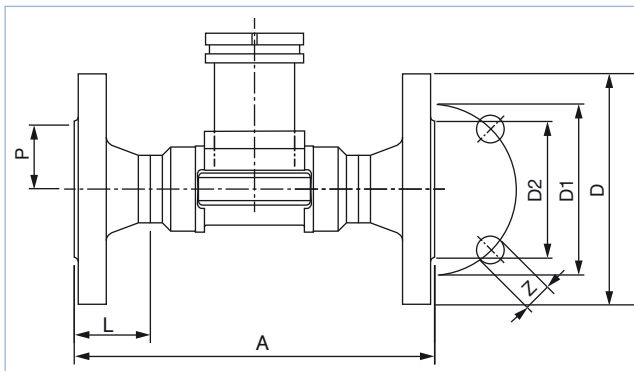
1.) Available with internal surface finish Ra < 0.8 µm  
 2.) Similar to DIN 32676 series B but with clamp 34.0

**Flange process connection**

**Note:**

- Specifications in mm
- For use with a flowmeter with short sensor
- Suitable from DN32 for use with an analytical measuring device

According to EN1092-1/B1/PN16 or ANSI B16-5 in stainless steel (316L - 1.4404)



| DN | P    | A   | Standard | L    | Z        | D     | D1    | D2    |
|----|------|-----|----------|------|----------|-------|-------|-------|
| 15 | 80.3 | 130 | EN       | 23.5 | 4 x 14.0 | 95.0  | 65.0  | 45.0  |
|    |      | 130 | ANSI     |      |          |       |       |       |
| 20 | 77.8 | 150 | EN       | 28.5 | 4 x 14.0 | 105.0 | 75.0  | 58.0  |
|    |      | 150 | ANSI     |      |          |       |       |       |
| 25 | 78.0 | 160 | EN       | 28.5 | 4 x 14.0 | 115.0 | 85.0  | 68.0  |
|    |      | 160 | ANSI     |      |          |       |       |       |
| 32 | 81.6 | 180 | EN       | 31.0 | 4 x 18.0 | 140.0 | 100.0 | 78.0  |
|    |      | 180 | ANSI     |      |          |       |       |       |
| 40 | 85.4 | 200 | EN       | 36.0 | 4 x 18.0 | 150.0 | 110.0 | 88.0  |
|    |      | 200 | ANSI     |      |          |       |       |       |
| 50 | 91.5 | 230 | EN       | 41.0 | 4 x 18.0 | 165.0 | 125.0 | 102.0 |
|    |      | 230 | ANSI     |      |          |       |       |       |



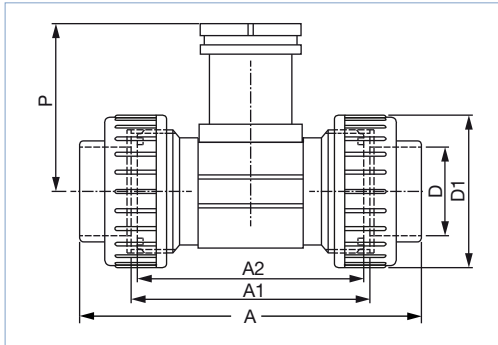
#### 4.2. Plastic T-fitting for measuring device with G 2" connection

True union connection with nut and solvent/fusion socket

**Note:**

- Specifications in mm
- For use with a flowmeter with short sensor
- Suitable for use with an analytical measuring device. Please note that the fittings DN15...DN25 to be used for the analysis measurement differ from those for the flow measurement.

According to DIN 8063, ASTM D 1785/76 or JIS K in PVC, DIN 16962 in PP or ISO 10931 in PVDF



| DN                | P    | A     | Standard | A1  | A2  | D     | D1  |
|-------------------|------|-------|----------|-----|-----|-------|-----|
| 15                | 80.4 | 128.0 | DIN/ISO  | 96  | 90  | 20.00 | 43  |
|                   |      | 130.0 | ASTM     |     |     | 21.30 |     |
|                   |      | 129.0 | JIS      |     |     | 18.40 |     |
| 15 <sup>1.)</sup> | 81.4 | 148.0 | DIN/ISO  | 116 | 110 | 20.00 | 74  |
| 20                | 77.8 | 144.0 | DIN/ISO  | 106 | 100 | 25.00 | 53  |
|                   |      | 145.6 | ASTM     |     |     | 26.70 |     |
|                   |      | 145.0 | JIS      |     |     | 26.45 |     |
| 20 <sup>1.)</sup> | 81.4 | 154.0 | DIN/ISO  | 116 | 110 | 25.00 | 74  |
| 25                | 78.0 | 160.0 | DIN/ISO  | 116 | 110 | 32.00 | 60  |
|                   |      | 161.4 | ASTM     |     |     | 33.40 |     |
|                   |      | 161.0 | JIS      |     |     | 32.55 |     |
| 25 <sup>1.)</sup> | 81.4 | 160.0 | DIN/ISO  | 116 | 110 | 32.00 | 74  |
| 32                | 81.4 | 168.0 | DIN/ISO  | 116 | 110 | 40.00 | 74  |
|                   |      | 170.0 | ASTM     |     |     | 42.20 |     |
|                   |      | 169.0 | JIS      |     |     | 38.60 |     |
| 40                | 85.2 | 188.0 | DIN/ISO  | 127 | 120 | 50.00 | 83  |
|                   |      | 190.2 | ASTM     |     |     | 48.30 |     |
|                   |      | 190.0 | JIS      |     |     | 48.70 |     |
| 50                | 91.5 | 212.0 | DIN/ISO  | 136 | 130 | 63.00 | 103 |
|                   |      | 213.6 | ASTM     |     |     | 60.30 |     |
|                   |      | 213.0 | JIS      |     |     | 60.80 |     |

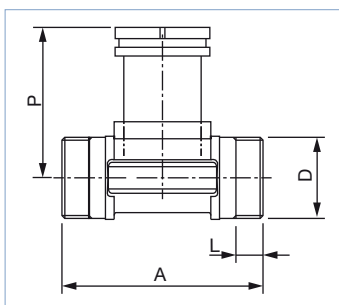
1.) Fitting for analytical measurement

#### External thread process connection

**Note:**

- Specifications in mm (except if explicitly mentioned)
- For use with a flowmeter with short sensor
- Not suitable for use with an analytical measuring device

According to G in PVC (only DN06 and DN08)



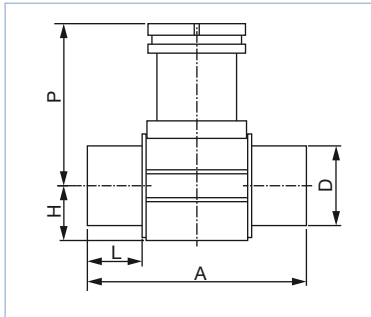
| DN | P    | A    | D      |      | L    |
|----|------|------|--------|------|------|
|    |      |      | [Inch] | [mm] |      |
| 06 | 75.3 | 90.0 | G ½    | –    | 14.0 |
| 08 | 75.3 | 90.0 | G ½    | –    | 14.0 |

**Solvent/fusion spigot process connection**

**Note:**

- Specifications in mm
- For use with a flowmeter with short sensor
- Suitable from DN32 for use with an analytical measuring device

According to DIN 8063 in PVC, DIN 16962 in PP or ISO 10931 in PVDF



| DN | P    | A   | Standard  | L    | D  | H    |
|----|------|-----|-----------|------|----|------|
| 15 | 80.4 | 90  | DIN 8063  | 16.5 | 20 | 17.5 |
|    |      | 85  | DIN 16962 | 14.0 |    |      |
|    |      | 85  | DIN 10931 | 14.0 |    |      |
| 20 | 77.8 | 100 | DIN 8063  | 20.0 | 25 | 17.5 |
|    |      | 92  | DIN 16962 | 16.0 |    |      |
|    |      | 92  | DIN 10931 | 16.0 |    |      |
| 25 | 78.0 | 110 | DIN 8063  | 23.0 | 32 | 21.5 |
|    |      | 95  | DIN 16962 | 18.0 |    |      |
|    |      | 95  | DIN 10931 | 18.0 |    |      |
| 32 | 81.4 | 110 | DIN 8063  | 27.5 | 40 | 27.5 |
|    |      | 100 | DIN 16962 | 20.0 |    |      |
|    |      | 100 | DIN 10931 | 20.0 |    |      |
| 40 | 85.2 | 120 | DIN 8063  | 30.0 | 50 | 31.5 |
|    |      | 106 | DIN 16962 | 23.0 |    |      |
|    |      | 106 | DIN 10931 | 23.0 |    |      |
| 50 | 91.5 | 130 | DIN 8063  | 37.0 | 63 | 39.5 |
|    |      | 110 | DIN 16962 | 27.0 |    |      |
|    |      | 110 | DIN 10931 | 27.0 |    |      |

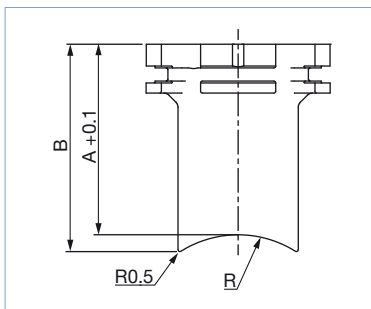
**4.3. Welding spigot/socket process connection for measuring device with G 2" connection**

**Welding socket process connection, with radius**

**Note:**

- Specifications in mm
- For use with a flowmeter with short versions for DN50...DN200 and with long sensor for DN250...DN350
- Only suitable from DN50...DN200 for use with an analytical measuring device

In stainless steel (316L - 1.4404)



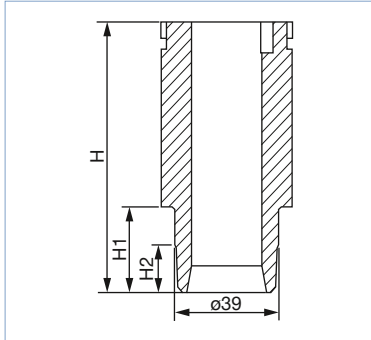
| DN  | A    | B    | R     |
|-----|------|------|-------|
| 50  | 56.6 | 61.6 | 30.2  |
| 65  | 54.5 | 58.6 | 36.7  |
| 80  | 53.1 | 56.4 | 44.5  |
| 100 | 50.7 | 53.2 | 57.2  |
| 125 | 48.2 | 50.3 | 70.7  |
| 150 | 45.7 | 47.4 | 84.2  |
| 200 | 41.0 | 42.3 | 109.6 |
| 250 | 73.6 | 74.7 | 136.6 |
| 300 | 67.8 | 68.7 | 162.0 |
| 350 | 63.9 | 64.7 | 177.8 |

**Fusion spigot process connection**

**Note:**

- Specifications in mm
- For use with a flowmeter with short sensor for DN65...DN100 and with long sensor for DN125...DN400
- Only suitable for DN65...DN100 for use with an analytical measuring device

In PE, PP or PVDF



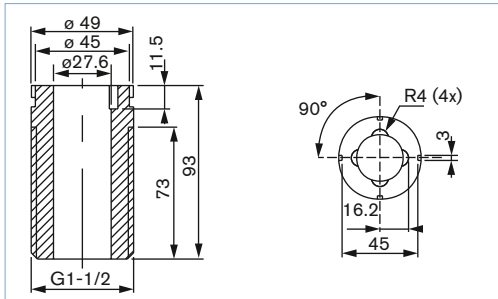
| DN  | H     | Materials | H1   | H2   |
|-----|-------|-----------|------|------|
| 65  | 72.5  | PE        | 13.0 | -    |
|     |       | PP        | 13.0 | -    |
|     |       | PVDF      | 10.4 | -    |
| 80  | 72.5  | PE        | 15.6 | -    |
|     |       | PP        | 15.6 | -    |
|     |       | PVDF      | 12.5 | -    |
| 100 | 72.5  | PE        | 19.0 | 5.0  |
|     |       | PP        | 19.0 | 5.0  |
|     |       | PVDF      | 15.2 | 6.0  |
| 125 | 102.0 | PE        | 24.2 | 8.0  |
|     |       | PP        | -    | -    |
|     |       | PVDF      | -    | -    |
| 150 | 102.0 | PE        | 27.7 | 10.0 |
|     |       | PP        | 27.7 | 10.0 |
|     |       | PVDF      | -    | -    |
| 200 | 102.0 | PE        | 38.9 | 16.0 |
|     |       | PP        | 38.9 | 16.0 |
|     |       | PVDF      | -    | -    |
| 250 | 102.0 | PE        | 48.4 | 21.0 |
|     |       | PP        | 48.4 | 21.0 |
|     |       | PVDF      | -    | -    |
| 300 | 102.0 | PE        | 54.5 | 24.0 |
|     |       | PP        | 54.5 | 24.0 |
|     |       | PVDF      | -    | -    |
| 350 | 102.0 | PE        | 61.3 | 28.0 |
|     |       | PP        | 61.3 | 28.0 |
|     |       | PVDF      | -    | -    |
| 400 | 102.0 | PE        | 69.1 | 31.5 |
|     |       | PP        | -    | -    |
|     |       | PVDF      | -    | -    |

**Screw-on spigot process connection**

**Note:**

- Specifications in mm
- Only for use with a flowmeter with long sensor

In PVC, PP, PE

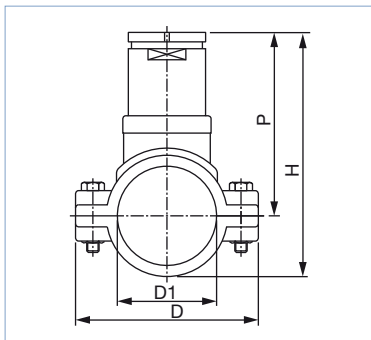


**4.4. Saddle for flowmeter with G 2" connection**

**Note:**

- Specifications in mm
- Only for use with a flowmeter with long sensor

Body in PP, adapter in PVC and seal in EPDM



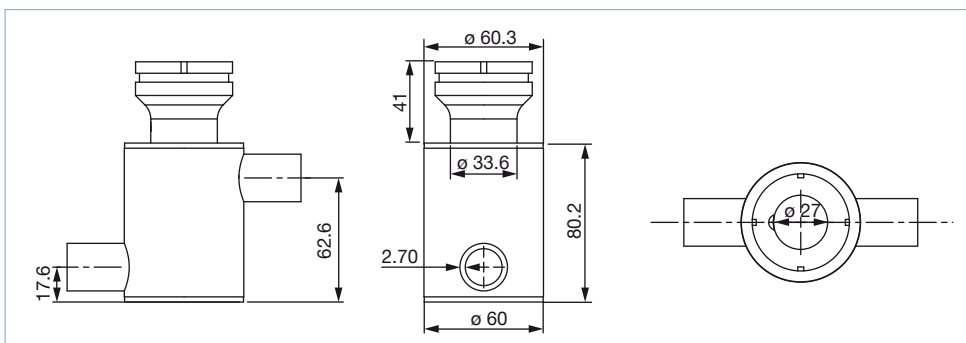
| DN  | P     | H   | D   | D1  |
|-----|-------|-----|-----|-----|
| 50  | 116.0 | 155 | 116 | 63  |
| 65  | 115.0 | 160 | 129 | 75  |
| 80  | 119.0 | 171 | 144 | 90  |
| 100 | 124.0 | 187 | 166 | 110 |
| 110 | 120.0 | 191 | 181 | 125 |
| 125 | 127.0 | 205 | 196 | 140 |
| 150 | 137.0 | 225 | 216 | 160 |
| 180 | 161.0 | 271 | 266 | 200 |
| 200 | 173.0 | 291 | 290 | 225 |

**4.5. Measuring chamber for analytical measuring device**

**Note:**

Specifications in mm

In stainless steel 316L - 1.4404, G 1/2" pipe connection



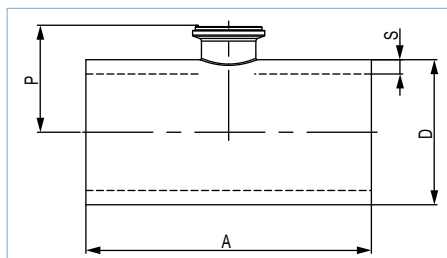
#### 4.6. T-fitting for flowmeter with clamp connection

##### Weld end process connection

**Note:**

Specifications in mm

According to SMS 3008, BS 4825-1/ASME BPE/DIN 11866 Series C or DIN 11850 Series 2/DIN 11866 Series A/DIN EN 10357 Series A in stainless steel 316L



| DN  | P    | A     | Standard  | D     | s    |
|-----|------|-------|---|-------|------|
| 40  | 42.5 | 140.0 | SMS 3008  | 38.0  | 1.20 |
|     | 43.7 | 120.6 | ASME BPE/DIN 11866 Series C                                     | 38.1  | 1.65 |
|     | 44.3 | 120.0 | DIN 11850 Series 2/DIN 11866 Series A/<br>DIN EN 10357 Series A | 41.0  | 1.50 |
| 50  | 49.3 | 164.0 | SMS 3008  | 51.0  | 1.20 |
|     | 50.6 | 146.0 | BS 4825-1/ASME BPE/DIN 11866 Series C                           | 50.8  | 1.65 |
|     | 50.8 | 160.0 | DIN 11850 Series 2/DIN 11866 Series A/<br>DIN EN 10357 Series A | 53.0  | 2.00 |
| 65  | 54.4 | 210.0 | SMS 3008  | 63.5  | 1.60 |
|     | 55.4 | 158.8 | BS 4825-1/ASME BPE/DIN 11866 Series C                           | 63.5  | 1.65 |
|     | 59.6 | 210.0 | DIN 11850 Series 2/DIN 11866 Series A/<br>DIN EN 10357 Series A | 70.0  | 2.00 |
| 80  | 60.7 | 220.0 | SMS 3008  | 76.1  | 1.60 |
|     | 62.0 | 171.5 | BS 4825-1/ASME BPE/DIN 11866 Series C                           | 76.2  | 1.65 |
|     | 67.3 | 260.0 | DIN 11850 Series 2/DIN 11866 Series A/<br>DIN EN 10357 Series A | 85.0  | 2.00 |
| 100 | 73.8 | 209.6 | BS 4825-1/ASME BPE/DIN 11866 Series C                           | 101.6 | 2.11 |
|     | 77.1 | 310.0 | DIN 11850 Series 2/DIN 11866 Series A/<br>DIN EN 10357 Series A | 104.0 | 2.00 |

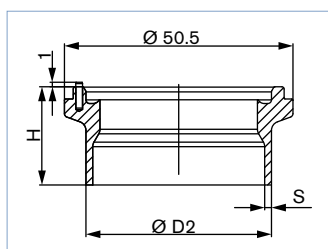
#### 4.7. Welding socket process connection for flowmeter with clamp connection

##### Welding socket process connection

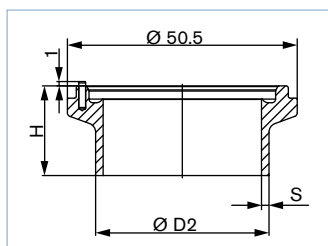
**Note:**

Specifications in mm

According to SMS 3008, DIN 11850 Series 2/DIN 11866 Series A/DIN EN 10357 Series A or BS 4825-1/ASME BPE/DIN 11866 Series C in stainless steel 316L



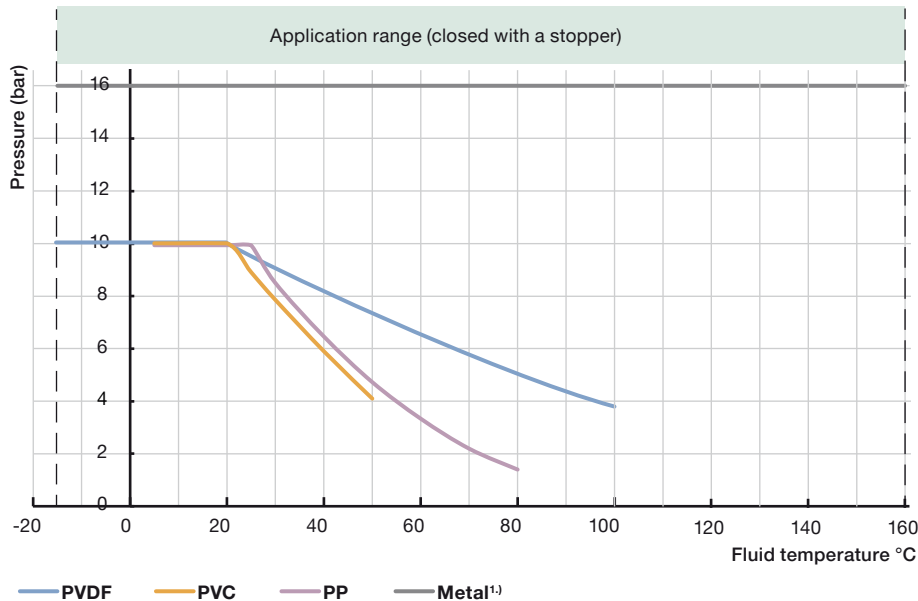
| DN  | Standard  | H    | S   | D2 |
|-----|---|------|-----|----|
| 40  | SMS 3008  | 21.7 | 1.2 | 38 |
|     | DIN 11850 Series 2/DIN 11866 Series A/DIN EN 10357 Series A | 21.7 | 1.5 | 41 |
| 50  | SMS 3008  | 21.7 | 1.2 | 38 |
|     | DIN 11850 Series 2/DIN 11866 Series A/DIN EN 10357 Series A | 21.7 | 1.5 | 41 |
| 65  | SMS 3008  | 19.7 | 1.2 | 38 |
|     | DIN 11850 Series 2/DIN 11866 Series A/DIN EN 10357 Series A | 21.7 | 1.5 | 41 |
| 80  | SMS 3008  | 19.7 | 1.2 | 38 |
|     | DIN 11850 Series 2/DIN 11866 Series A/DIN EN 10357 Series A | 21.7 | 1.5 | 41 |
| 100 | DIN 11850 Series 2/DIN 11866 Series A/DIN EN 10357 Series A | 19.7 | 1.5 | 41 |



| DN  | Standard                              | H    | S    | D2   |
|-----|---------------------------------------|------|------|------|
| 40  | ASME BPE/DIN 11866 Series C           | 23.7 | 1.65 | 38.1 |
| 50  | BS 4825-1/ASME BPE/DIN 11866 Series C | 23.7 | 1.65 | 38.1 |
| 65  | BS 4825-1/ASME BPE/DIN 11866 Series C | 19.7 | 1.65 | 38.1 |
| 80  | BS 4825-1/ASME BPE/DIN 11866 Series C | 19.7 | 1.65 | 38.1 |
| 100 | BS 4825-1/ASME BPE/DIN 11866 Series C | 19.7 | 1.65 | 38.1 |

## 5. Performance specifications

### 5.1. Pressure temperature diagram



1.) excepted fitting DN100 (-15...+160 °C, PN10) with clamp measuring device connection

## 6. Product installation

### 6.1. Installation notes

#### Flow measurement:

#### Note:

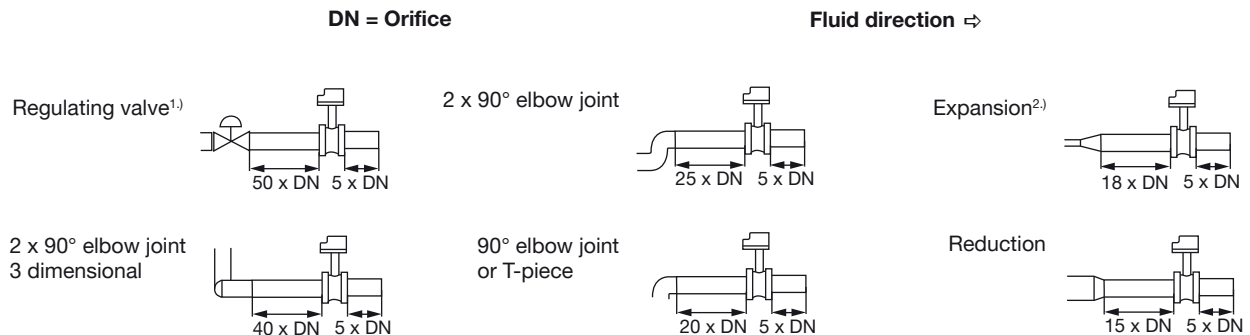
The fitting combined with a flow meter is not designed for gas and steam flow measurement.

Minimum straight upstream and downstream distances must be observed. According to the pipe's design, necessary distances can be bigger or use a flow conditioner to obtain the best accuracy.

For more information, please refer to EN ISO 5167-1.

EN ISO 5167-1 prescribes the straight inlet and outlet distances that must be complied with when installing fittings in pipe lines in order to achieve calm flow conditions. The most important layouts that could lead to turbulence in the flow are shown below, together with the associated prescribed minimum inlet and outlet distances.

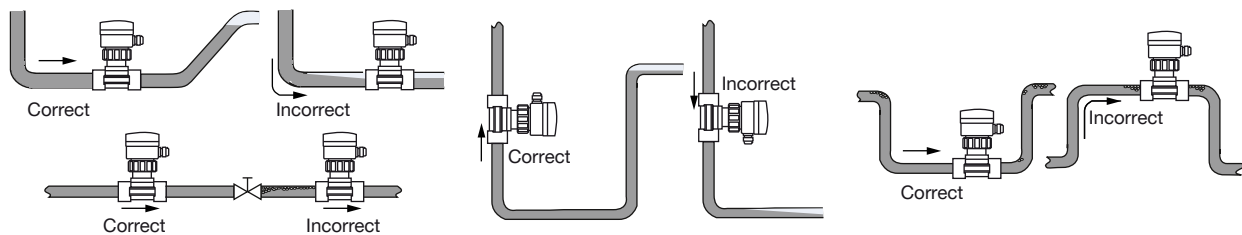
Make sure that the measuring conditions at the point of measurement are calm and problem-free.



1.) If the valve cannot be mounted after the measuring device, the minimal distances have to be respected.

2.) If an expansion cannot be avoided, the minimal distances have to be respected.  
Please note minimum flow velocity

The complete measuring device can be installed into either horizontal or vertical pipes. Important criteria for this are; ensure that the measurement pipe is fully filled and that the measurement pipe is air bubble free.



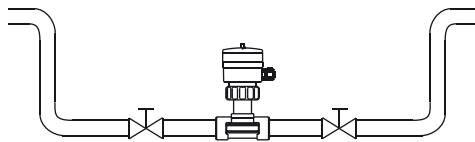
Pressure and temperature ratings must be respected according to the selected fitting material. The suitable pipe size is selected using the diagram for selecting the nominal diameter of the fitting.

See chapter [“6.2. Selection of the nominal diameter”](#) on page 15.

### Analytical measurement

For pH and ORP measurements, we recommended a “U”- form bypass installation to ensure that the electrode is maintained in a wet condition and enable the customer to calibrate the unit without stopping the whole process or to use the special designed measuring chamber.

The specially designed measuring chamber enables to install all pH, ORP., conductivity meters in all pipe systems, either directly in the main stream or in a by-pass line. Additionally it enables to keep the electrode always wet and isolates it easily from the main stream for calibration purposes.



## 6.2. Selection of the nominal diameter

The following graph is used to determine the DN of the pipe and the fitting appropriate to the application, according to the fluid velocity and the flow rate. On the chart, the intersection of flow rate and flow velocity gives the appropriate diameter.

Note:

For the fittings listed below, the corresponding nominal size in the bracket must be used:

- External threads acc. to SMS 1145
- Weld ends acc. to SMS 3008, BS4825-1/ASME BPE/DIN 11866 series C or DIN 11850 series 2/DIN 11866 series A/ DIN EN 10357 series A
- Clamp acc. to SMS 3017, BS 4825-3/ASME BPE or DIN 32676 series A

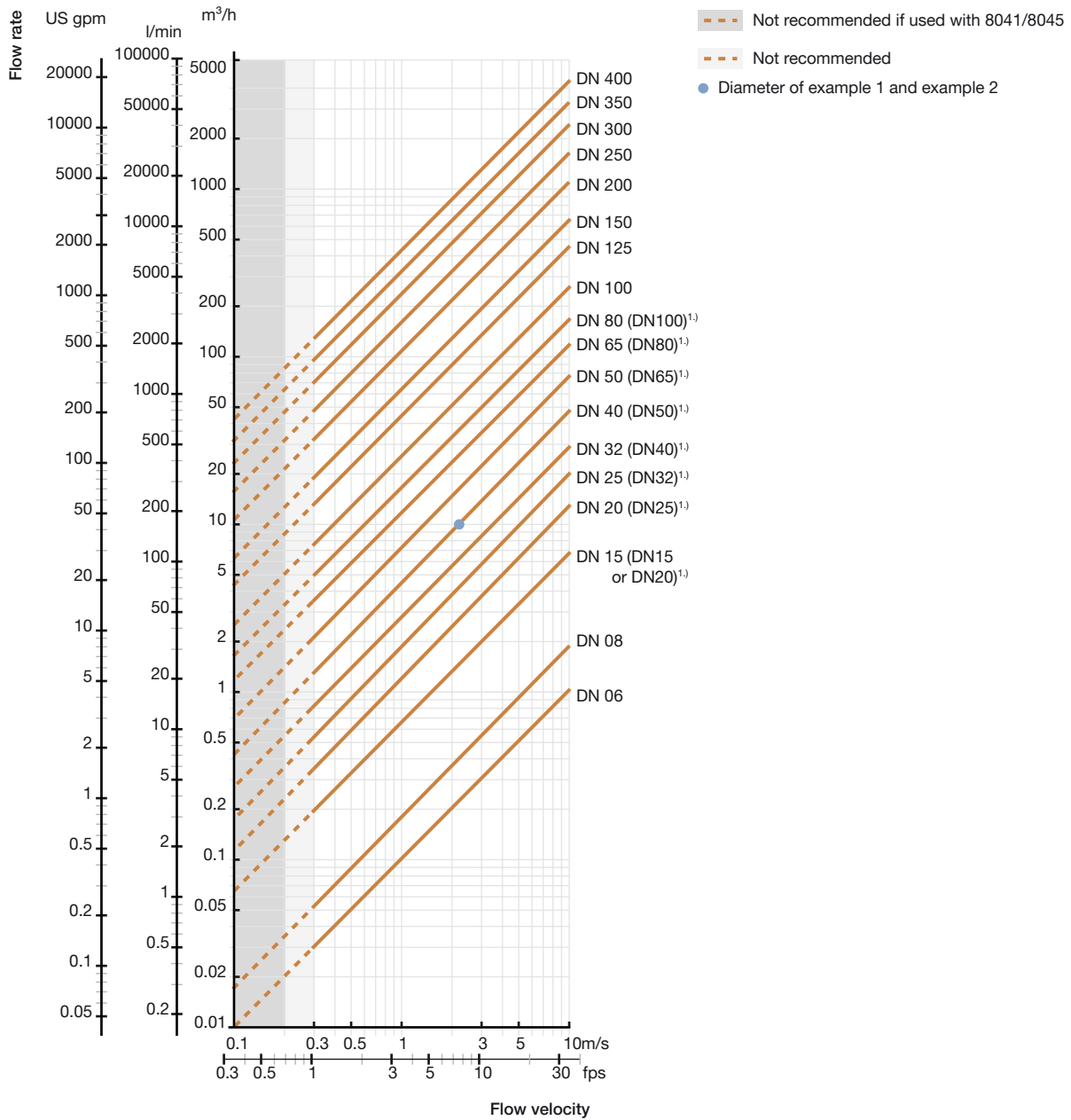
For all other fittings, the corresponding nominal diameter without bracket applies.

**Example 1:**

- Nominal flow: 10 m<sup>3</sup>/h
  - Optimal flow rate: 2...3 m/s
- Result: Select a pipe size of DN40

**Example 2 with external threads acc. to SMS 1145:**

- Nominal flow: 10 m<sup>3</sup>/h
  - Optimal flow rate: 2...3 m/s
- Result: Select a pipe size of DN50



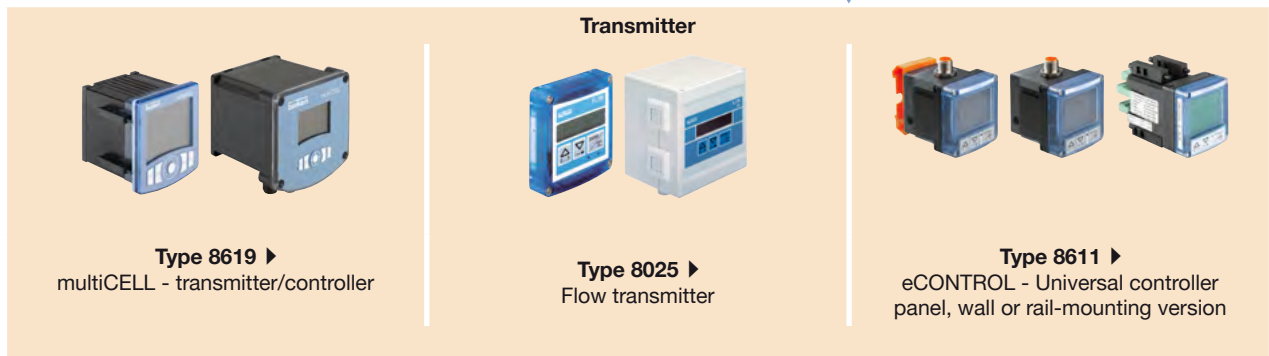
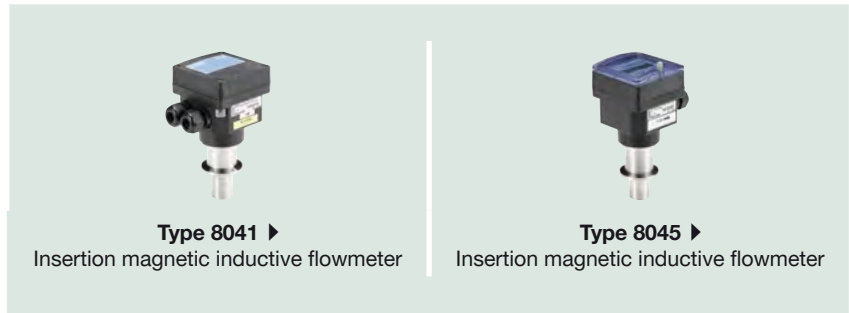
1.) See note at the beginning of this chapter.



Type S020

### 7.2. Fitting for for flowmeter with clamp connection

Example:



DTS 1000011768 EN Version: AG Status: RL (released | freigegeben | validé) printed: 21.08.2019

### 7.3. Combination of the S020 with a measuring device for flow rate, pH or ORP, conductivity measurement


| For device with G 2" connection  |  | DN06   | DN32                     | DN50  | DN65  | DN100                | DN200 | DN350 | DN400 |
|----------------------------------|--|--|--------------------------|---|---|----------------------|-------|-------|-------|
| Available S020 fittings DN       | T-fitting  | [Bar chart showing availability from DN06 to DN65] |                          |   |   |                      |       |       |       |
|                                  | Welding socket   |  |                          |   | [Bar chart showing availability from DN65 to DN350] |                      |       |       |       |
|                                  | Fusion spigot  |  |                          |   | [Bar chart showing availability from DN65 to DN400] |                      |       |       |       |
|                                  | Screw-on spigot  |  |                          |   |   | For flow measurement |       |       |       |
|                                  | Saddle   |  |                          |   | For flow measurement                                |                      |       |       |       |
| For device with clamp connection |  |  |                          |   |   |                      |       |       |       |
|                                  | T-fitting or welding socket  |  |                          | [Bar chart showing availability from DN32 to DN100] |   |                      |       |       |       |
| Device for                       | Flow rate measurement<br>8020, 8025, 8026, 8041 and 8045<br>with G 2" process connection   | DN06   | DN15 DN20 <sup>1.)</sup> | DN32 <sup>1.)</sup>                                 | DN50  | DN100                | DN200 |       | DN400 |
|                                  | 8041 and 8045<br>with clamp process connection   |  |                          |   |   |                      |       |       |       |
|                                  | Analytical measurement<br>pH or ORP:<br>Type 8200/8203<br>Conductivity:<br>Type 8220, 8228 |  |                          |   |   |                      |       |       |       |

- 1.) DN20 fittings according to the standards listed below cannot be used with flowmeter Type 8020, 8025, 8026.
- DN32 fittings according to the standards below cannot be used with analytical measuring devices Type 8200/8203, 8220 and 8228.
- Standards: Fittings with external threads acc. to SMS 1145, weld ends acc. to SMS 3008, BS 4825-1/ASME BPE/DIN 11866 series C or DIN 11850 series 2/DIN 11866 series A/DIN EN 10357 series A, Clamp acc. to SMS 3017, BS 4825-3/ASME BPE, DIN 32676 series A.
- 2.) See the note for the use of the fitting in chapter "4. Dimensions" on page 6
- 3.) Only use plastic fitting in analytical version with true union connection with nut and solvent/fusion socket according to DIN 8063 (PVC), to DIN 16962 (PP) or to ISO 10931 (PVDF), other materials on request.

For further details about the various combination possibilities (measuring device and fitting), please **consult the measuring device related data sheet**.

## 8. Ordering information

### 8.1. Bürkert eShop – Easy ordering and quick delivery




**Bürkert eShop – Easy ordering and fast delivery**

You want to find your desired Bürkert product or spare part quickly and order directly? Our online shop is available for you 24/7. Sign up and enjoy all the benefits.

[Order online now](#)

### 8.2. Bürkert product filter



**Bürkert product filter – Get quickly to the right product**

You want to select products comfortably based on your technical requirements? Use the Bürkert product filter and find suitable articles for your application quickly and easily.

[Try out our product filter](#)

## 8.3. Ordering chart

## Metal T-fitting DN06...DN65 for measuring device with G 2" connection

| Standard  | Article no. |             |               |               |        |        |        |        |               |
|---|-------------|-------------|---------------|---------------|--------|--------|--------|--------|---------------|
|   | DN06 - 1/2" | DN08 - 1/2" | DN15          | DN20          | DN25   | DN32   | DN40   | DN50   | DN65          |
| <b>Brass body &amp; stainless steel adapter - Fluid temperature max. 160 °C, PN16</b>           |             |             |               |               |        |        |        |        |               |
| <b>FKM seal</b>   |             |             |               |               |        |        |        |        |               |
| <b>Internal thread process connection</b>   |             |             |               |               |        |        |        |        |               |
| G   | -           | -           | 428712        | 428713        | 428714 | 428715 | 428716 | 428717 | -             |
| NPT   | -           | -           | 428718        | 428719        | 428720 | 428721 | 428722 | 428723 | -             |
| Rc  | -           | -           | 428724        | 428725        | 428726 | 428727 | 428728 | 428729 | -             |
| <b>External thread process connection</b>   |             |             |               |               |        |        |        |        |               |
| G   | -           | -           | 428730        | 428731        | 428732 | 428733 | 428734 | 428735 | -             |
| <b>Stainless steel body &amp; stainless steel adapter - Fluid temperature max. 160 °C, PN16</b> |             |             |               |               |        |        |        |        |               |
| <b>FKM seal</b>   |             |             |               |               |        |        |        |        |               |
| <b>Internal thread process connection</b>   |             |             |               |               |        |        |        |        |               |
| G   | -           | -           | 428736        | 428737        | 428738 | 428739 | 428740 | 428741 | -             |
| NPT   | -           | -           | 428742        | 428743        | 428744 | 428745 | 428746 | 428747 | -             |
| Rc  | -           | -           | 428748        | 428749        | 428750 | 428751 | 428752 | 428753 | -             |
| <b>External thread process connection</b>   |             |             |               |               |        |        |        |        |               |
| G   | 552434      | 552432      | 428754        | 428755        | 428756 | 428757 | 428758 | 428759 | -             |
| <b>Weld end process connection</b>  |             |             |               |               |        |        |        |        |               |
| EN ISO 1127/<br>ISO 4200/<br>DIN 11866 series B   | -           | -           | 428760        | 428761        | 428762 | 428763 | 428764 | 428765 | -             |
| <b>Clamp process connection</b>   |             |             |               |               |        |        |        |        |               |
| DIN 32676 series B  | -           | -           | 428766<br>2.) | 428767        | 428768 | 428769 | 428770 | 428771 | -             |
| <b>Flange process connection</b>  |             |             |               |               |        |        |        |        |               |
| EN 1092-1/B1/PN16   | -           | -           | 428772        | 428773        | 428774 | 428775 | 428776 | 428777 | -             |
| ANSI B16-5  | -           | -           | 428778        | 428779        | 428780 | 428781 | 428782 | 428783 | -             |
| <b>EPDM seal</b>  |             |             |               |               |        |        |        |        |               |
| <b>External thread process connection</b>   |             |             |               |               |        |        |        |        |               |
| SMS 1145  | -           | -           | -             | -             | 443317 | -      | 443318 | 443319 | -             |
| <b>Weld end process connection</b>  |             |             |               |               |        |        |        |        |               |
| SMS 3008  | -           | -           | -             | -             | 443309 | -      | 443310 | 443311 | 443944<br>4.) |
| BS 4825-1/<br>ASME BPE/<br>DIN 11866 series C   | -           | -           | -             | 443734<br>3.) | 443735 | 443736 | 443942 | 443943 | 443944        |
| <b>Clamp process connection</b>   |             |             |               |               |        |        |        |        |               |
| SMS 3017  | -           | -           | -             | -             | 443313 | -      | 443314 | 443315 | 443969<br>4.) |
| SMS 3017 <sup>1.)</sup>   | -           | -           | -             | -             | 443957 | -      | 443958 | 443959 | 443974<br>4.) |
| BS 4825-3/<br>ASME BPE  | -           | -           | -             | 443965<br>3.) | 443966 | -      | 443967 | 443968 | 443969        |
| BS 4825-3/<br>ASME BPE <sup>1.)</sup>   | -           | -           | -             | 443970        | 443971 | -      | 443972 | 443973 | 443974        |

1.) Internal surface finish Ra &lt; 0.8 µm

2.) Refer to Clamp with D dimensions of 34 mm (see chapter "Clamp process connection" on page 8)

3.) DN20 (¾") only available in ASME BPE

4.) Please refer to ASME BPE

## Further versions on request



## Process connection

Weld end connection according to DIN 11850 series 2/DIN 11866 series A/ DIN EN 10357 series A  
Clamp according to DIN 32676 series A



| Article no.                                     |      |      |        |        |        |        |        |        |        |        |
|---|------|------|--------|--------|--------|--------|--------|--------|--------|--------|
| DN50  | DN65 | DN80 | DN100  | DN125  | DN150  | DN200  | DN250  | DN300  | DN350  | DN400  |
| <b>Screw-on spigot process connection</b>       |      |      |        |        |        |        |        |        |        |        |
| <b>PVC - Fluid temperature max. 50 °C, PN10</b> |      |      |        |        |        |        |        |        |        |        |
| -   | -    | -    | 418170 | 418170 | 418170 | 418170 | -      | -      | -      | -      |
| <b>PE - Fluid temperature max. 70 °C, PN10</b>  |      |      |        |        |        |        |        |        |        |        |
| -   | -    | -    | 436489 | 436489 | 436489 | 436489 | 436489 | 436489 | 436489 | 436489 |
| <b>PP - Fluid temperature max. 50 °C, PN10</b>  |      |      |        |        |        |        |        |        |        |        |
| -   | -    | -    | 436488 | 436488 | 436488 | 436488 | 436488 | 436488 | 436488 | 436488 |

## Saddle for flowmeter with G 2" connection

| Seal  | Article no. |        |        |        |        |        |        |        |        |  |
|---|-------------|--------|--------|--------|--------|--------|--------|--------|--------|--|
|   | DN50        | DN65   | DN80   | DN100  | DN110  | DN125  | DN150  | DN180  | DN200  |  |
| <b>PP body &amp; PVC- adapter - Fluid temperature max. 60 °C, PN10 (for PVC or PP pipe)</b> |             |        |        |        |        |        |        |        |        |  |
| EPDM  | 425138      | 425139 | 425140 | 425141 | 425142 | 425143 | 425144 | 433873 | 425416 |  |

## Measuring chamber for analytical measuring device

| Description  | Article no. |
|--|-------------|
| Measuring chamber in stainless steel 316L - 1.4404 (other material on request) | 425138      |

## T-fitting DN32...DN100 for flowmeter Type 8041/8045 with clamp connection

| Standard  | Article no.  |              |              |              |              |               |
|---|--------------|--------------|--------------|--------------|--------------|---------------|
|   | DN32<br>PN16 | DN40<br>PN16 | DN50<br>PN16 | DN65<br>PN16 | DN80<br>PN16 | DN100<br>PN10 |
| <b>Stainless steel - Fluid temperature max. 160 °C</b>      |              |              |              |              |              |               |
| SMS 3008  | -            | 564915       | 564916       | 564917       | 564918       | 1.)           |
| BS 4825-1/ASME BPE/DIN 11866 series C                       | -            | 564920       | 564921       | 564922       | 564923       | 564924        |
| DIN 11850 series 2/DIN 11866 series A/DIN EN 10357 series A | -            | 564925       | 564926       | 564927       | 564928       | 564929        |

## Welding socket process connection for flowmeter Type 8041/8045 with clamp connection

| Standard  | Article no.  |              |              |              |              |               |
|---|--------------|--------------|--------------|--------------|--------------|---------------|
|   | DN32<br>PN16 | DN40<br>PN16 | DN50<br>PN16 | DN65<br>PN16 | DN80<br>PN16 | DN100<br>PN10 |
| <b>Stainless steel - Fluid temperature max. 160 °C</b>      |              |              |              |              |              |               |
| SMS 3008  | -            | 564696       | 564696       | 564697       | 567697       | 1.)           |
| BS 4825-1/ASME BPE/DIN 11866 series C                       | -            | 564698       | 564698       | 564699       | 564699       | 564699        |
| DIN 11850 series 2/DIN 11866 series A/DIN EN 10357 series A | -            | 565069       | 565069       | 565069       | 565069       | 535390        |

1.) Please refer to BS 4825-1/ASME BPE/DIN 11866 series C or to DIN 11850 series 2/DIN 11866 series A/DIN EN 10357 series A

## Further versions on request

**Process connection**

According to EN ISO 1127/ISO 4200/DIN 11866 series B (DN32...DN80)

## 8.4. Ordering chart accessories

### Accessories for all versions

| Description  | Article no. |
|--|-------------|
| <b>Approvals/Certificates</b>  |             |
| Inspection certificate 3.1 (acc. to EN-ISO 10204)  | 803723      |
| Test report 2.2 (acc. to EN-ISO 10204)   | 803722      |
| Certification of Conformity for the surface Quality (DIN4762-DIN4768-ISO/4287/1)                     | 804175      |
| 3 points Flow calibration certificate (S020 combined with the flow device inserted, only for DN≤200) | 550676      |
| FDA approval   | 803724      |

### Accessories for fitting for measuring device with G 2" connection

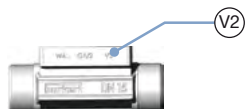
#### Note:

Since March 2012, sensor-fittings Type S020 in DN15 and DN20 exist in two versions, that have different K factors (Detailed information can be found in the user manual in chapter K-factor, see **Type S020** ). The second version is identified by the marking "v2". This "v2" marking can be found:

- on the bottom of the DN15 or DN20 sensor-fitting in plastic



- on the side of the DN15 or DN20 sensor-fitting in metal



| Accessory  | Description  | Article no. |
|--|--|-------------|
| <b>Stopper with ring, union nut and O-ring</b>   |  |             |
|  | Stainless steel                                      | 438755      |
|  | PVC  | 438754      |
|  | PP   | 627614      |
| <b>Adapter with 4 screws (DN06...DN65)</b>   |  |             |
|  | Stainless steel                                      | 555484      |
|  | PVC  | 561175      |
|  | PP   | 561176      |
|  | PVDF   | 561177      |
| <b>O-Ring set (DN06...DN65)</b>  |  |             |
| Between T-fitting body & adapter: flat seal to use for holder with groove (old version, no more available for order), O-Ring to use for holder with lug (version "v2") |  |             |
|  | FKM - for metal fitting (5 units)                    | 428971      |
|  | EPDM - for metal fitting (5 units)                   | 428972      |
|  | FKM - for plastic fitting (1 flat gasket + 1 O-ring) | 561043      |
|  | FKM - for plastic fitting (1 flat gasket + 1 O-ring) | 561044      |

### Accessories for fitting for flowmeter Type 8041/8045 with clamp connection

| Accessory | Description                   | Article no. |
|-----------|-------------------------------|-------------|
|           | 1 EPDM fitting/flowmeter seal | 730837      |
|           | 1 FEP fitting/flowmeter seal  | 730839      |
|           | Clamp collar                  | 731164      |
|           | Stopper for fitting           | 565200      |

# Bürkert – Close to You

For up-to-date addresses  
please visit us at  
[www.burkert.com](http://www.burkert.com)

DTS 1000011768 EN Version: AG Status: RL (released | freigegeben | validé) printed: 21.08.2019

