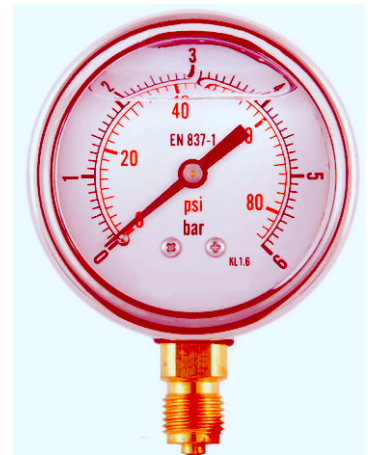


# RADIAL PRESSURE GAUGES DIAMETER 63 TYPE MIRG63

## CONSTRUCTION FEATURES - TECHNICAL SPECIFICATIONS

<b>NOMINAL DIAMETER (DN):</b>	63 mm
<b>EXCECUTION:</b>	Radial
<b>ACCURACY:</b>	1,6% f.s.
<b>CASE and RING:</b>	Stainless Steel, glycerine filled
<b>PROCESS CONNECTION:</b>	Copper alloy
<b>PRESSURE ELEMENT:</b>	Copper alloy
<b>MOVEMENT:</b>	Copper alloy
<b>INDEX:</b>	Aluminium
<b>WINDOW:</b>	Polycarbonate
<b>DIAL:</b>	White aluminium with pointer stop pin
<b>TEMPERATURE:</b>	Ambient -20 ÷ 60°C; Fluid 60 °C
<b>DESIGN:</b>	EN 837-1
<b>UNIT:</b>	bar, bar/psi, psi, Kpa, Mpa, other*
<b>PROCESS CONNECTIONS:</b>	1/4"G, 1/4" NPT, 1/4 Conical
<b>RANGE:</b>	-1/0; -1/0,6; -1/1,5; -1/3; -1/5;-1/9; -1/15; -1/24; 0/0,6; 0/1; 0/1,6; 0/2,5; 0/4; 0/6; 0/10; 0/12; 0/16; 0/20; 0/25; 0/40; 0/60; 0/100; 0/160; 0/200; 0/250; 0/315; 0/400; 0/600; 0/1000; Other*



## ORDERING CODE

**MIRG63 G1/4 0/40 B**

TYPE
MIRG63

PROCESS CONNECTION
G1/4 - N1/4 - R1/4

STANDARD RANGE
-1/0; -1/0,6; -1/1,5; -1/3; -1/5; -1/9 -1/15; -1/24; 0/0,6; 0/1; 0/1,6; 0/2,5; 0/4; 0/6; 0/10; 0/12; 0/16; 0/20; 0/25; 0/40; 0/60; 0/100; 0/160 0/200; 0/250; 0/315; 0/400; 0/600; 0/1000

UNIT
B - B/P - P - K - M

## CODE EXPLANATION

### TYPE

MIRG63 Radial pressure gauge glycerine filled Diameter 63mm

### PROCESS CONNECTIONS

G1/4	1/4" Gas
N1/4	1/4" NPT
R1/4	1/4" Gas Conical

### RANGE

Range:	Code:	Range:	Code:
-1/0	-1/0	0/12	0/12
-1/0,6	-1/0.6	0/16	0/16
-1/1,5	-1/1.5	0/20	0/20
-1/3	-1/3	0/25	0/25
-1/5	-1/5	0/40	0/40
-1/9	-1/9	0/60	0/60
-1/15	-1/15	0/100	0/100
-1/24	-1/24	0/160	0/160
0/0,6	0/0.6	0/200	0/200
0/1	0/1	0/250	0/250
0/1,6	0/1.6	0/315	0/315
0/2,5	0/2.5	0/400	0/400
0/4	0/4	0/600	0/600
0/6	0/6	0/1000	0/1000
0/10	0/10		

### UNIT

bar	B
bar/psi	B/P
psi	P
Kpa	K
Mpa	M
altro	*