

# LEVEL PROBES FOR NAVAL TANKS TYPE CSFP33P - CSFPS

## DESCRIPTION:

The CSF33 series modular probe has been designed for satisfy the multiple level control requests typically used in DIESEL OIL, CASES CLEAN WATER, GRAY WATER BOXES and BOXES BLACK WATERS.

The choice of this probe makes the constructor free of stock a single product in a very short time time can be customized according to dimensions and shapes of the tanks used in the line of boats. The probe consists of 2 parts main:

The mechanical part consists of a stainless steel rod AISI 316 with connection to the flanged tank and a sensor of programmable pressure.

The sensor connection to the pole is achieved through a compression fitting. The probe is supplied with standard 1.70 m rods This system allows very simply to cut to the necessary size the rod, connect it to the instrument through the connection a compression and make the tool suitable for tank size in which it will be installed.

In support of the sensors, it will be enough to buy 1 kit of connection to the PC to program the probe to keep in stock.

## TECNICAL FEATURES:

Materials Flanged rod and AISI316 sensor.

Rod length supplied 1,70 mt.

Round flange 100 mm diameter.

N ° 6 flange fixing holes diam. 6.5 mm.

Center distance 85 mm (others on request)

Electrical connection with cable gland



# LEVEL PROBES FOR NAVAL TANKS TYPE CSFP33P - CSFPS

## PRESSURE TRANSMITTER TYPE 33X EI

- Range: 0...2 mH2O
- Overpressure: 2 bar
- Output: 4...20 mA (2 wires) + RS485
- Power supply: 10...28 Vdc
- Accuracy (-10...80° C):  $\pm 0,15\%$  FS
- Working temperature: -40...100° C
- Compensated temperature: -10...80° C
- Electrical connections: cable length 7 meters included of PTFE tube for atmospheric pressure reference
- Protection: IP 68
- Process connection:  $\frac{3}{4}$ " or  $\frac{1}{2}$ " male gas threaded
- Process connection: standard or facing membrane
- Parts in contact with fluid: Stainless Steel AISI 316L
- Classification: II1 G EEx ia IIC T6 to T4
- Declaration of Conformity: KEMA 04 ATEX 1081 X
- Other features as per technical document 33X series

## CARATTERISTICHE

The supplied software makes it possible to configure the pressure transmitter. Based on the sensor model chosen, this can be configured for tanks with more shapes or less irregular. Connection to the PC is via cable with USB connection therefore practically universal. the two versions of the 33X sensor available differ by i programming parameters available:

The CSFP33 version, allows to set the zero and the full-scale. It is used for regular or for tanks structural tanks with irregular shapes where the linearization height / level / volume is performed by automation of board. See FIG. 1 and 2.

The CSFP33S version allows you to set the zero, the full scale and the linearization of the curve on 8 points. It is used on structural tanks with irregular shapes when this is not possible linearization through onboard automation. See FIG. 3 and 4.

## PROGRAMMING AND CALIBRATION KIT:

- Software READ30 / PROG30 V2.8
- K-104 USB driver
- Cable K-104A

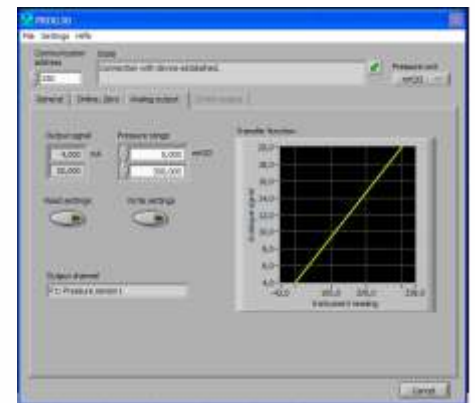
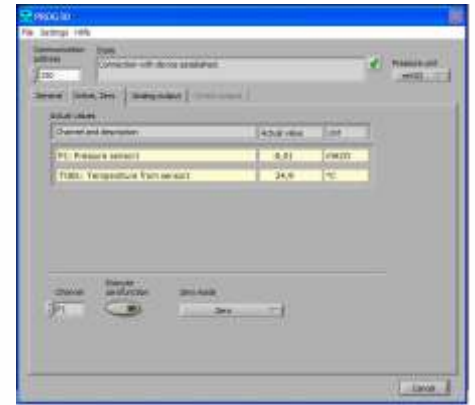


Fig.1 e 2

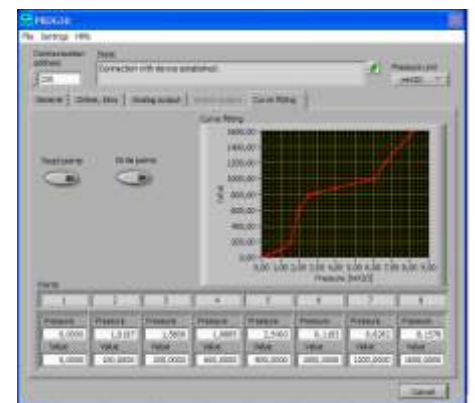
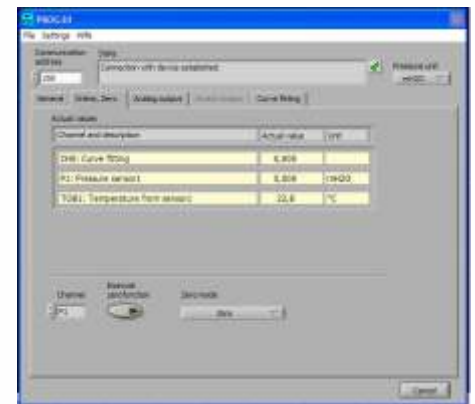


Fig.3 e 4